

Product datasheet for **TA371519**

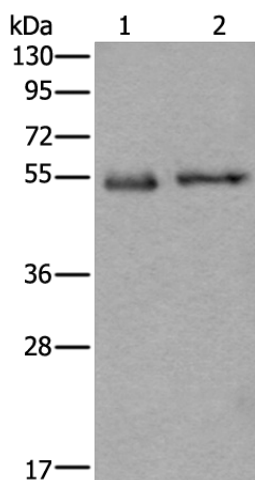
SLC38A1 Rabbit Polyclonal Antibody

Product data:

| | |
|-------------------------|--|
| Product Type: | Primary Antibodies |
| Applications: | IHC, WB |
| Recommended Dilution: | WB: 200-1000 WB positive control: Human liver cancer tissue and Human placenta tissue lysates IHC: 10-50 Positive control: Human brain Predicted cell location: Cytoplasm and Cell membrane |
| Reactivity: | Human, Mouse, Rat |
| Host: | Rabbit |
| Isotype: | IgG |
| Clonality: | Polyclonal |
| Immunogen: | Synthetic peptide of human SLC38A1 |
| Formulation: | pH7.4 PBS, 0.05% NaN ₃ , 40% Glycerol |
| Concentration: | lot specific |
| Purification: | Antigen affinity purification |
| Conjugation: | Unconjugated |
| Storage: | Store at -20°C. |
| Stability: | 1 year |
| Predicted Protein Size: | 54 kDa |
| Gene Name: | solute carrier family 38 member 1 |
| Database Link: | Entrez Gene 81539 Human Q9H2H9 |
| Background: | Amino acid transporters play essential roles in the uptake of nutrients, production of energy, chemical metabolism, detoxification, and neurotransmitter cycling. SLC38A1 is an important transporter of glutamine, an intermediate in the detoxification of ammonia and the production of urea. Glutamine serves as a precursor for the synaptic transmitter, glutamate . |
| Synonyms: | ATA1; NAT2; SAT1; SNAT1 |



[View online »](#)

Product images:

Gel: 6%SDS-PAGE

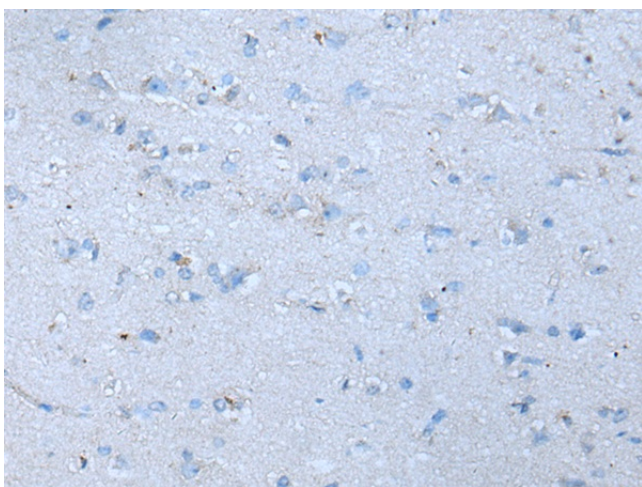
Lysate: 40 μ g

Lane 1-2: Human liver cancer tissue and Human placenta tissue lysates

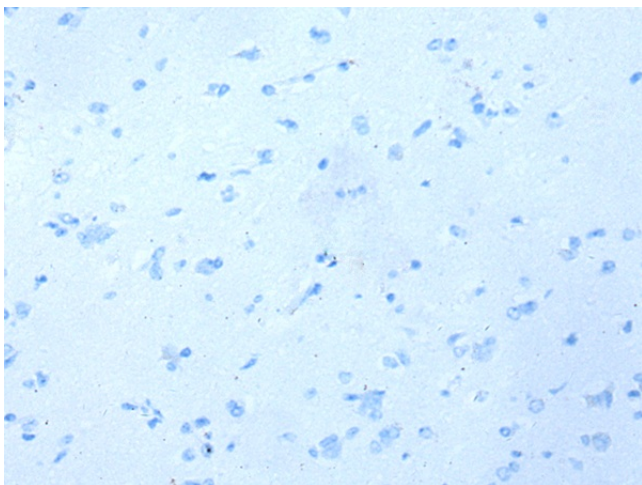
Primary antibody: TA371519 (SLC38A1 Antibody) at dilution 1/250

Secondary antibody: Goat anti rabbit IgG at 1/8000 dilution

Exposure time: 2 minutes



Immunohistochemistry of paraffin-embedded Human brain tissue using TA371519 (SLC38A1 Antibody) at dilution 1/25 (Original magnification: \times 200)



Immunohistochemistry of paraffin-embedded Human brain tissue using TA371519 (SLC38A1 Antibody) at dilution 1/25, treated with synthetic peptide. (Original magnification: x200)