

Product datasheet for **TA371516**

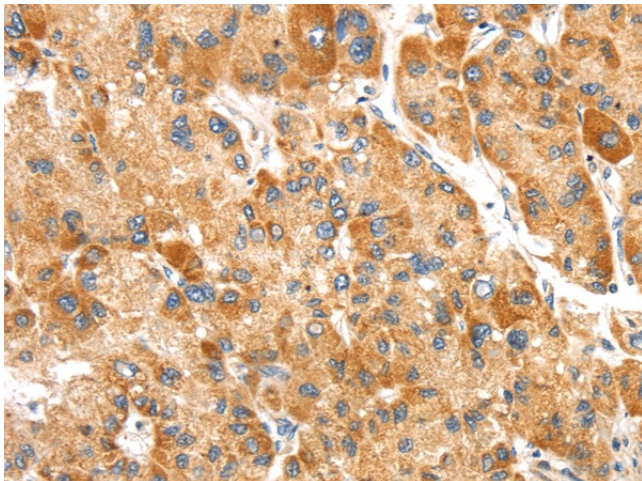
SLC24A6 (SLC8B1) Rabbit Polyclonal Antibody

Product data:

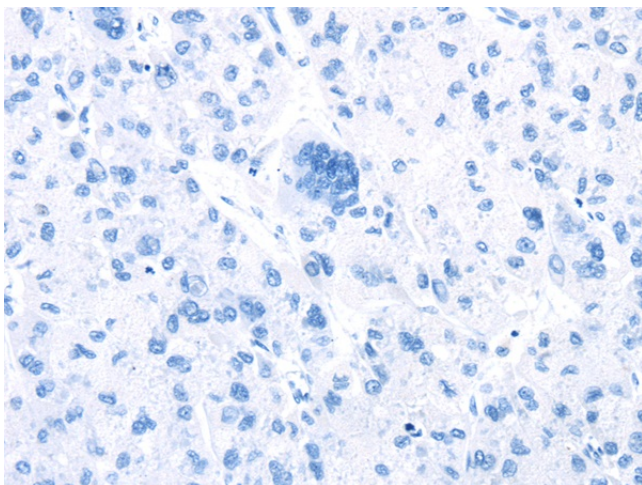
Product Type:	Primary Antibodies
Applications:	IHC
Recommended Dilution:	IHC: 25-100 Positive control: Human liver cancer Predicted cell location: Cytoplasm
Reactivity:	Human, Mouse, Rat
Host:	Rabbit
Isotype:	IgG
Clonality:	Polyclonal
Immunogen:	Synthetic peptide of human SLC8B1
Formulation:	pH7.4 PBS, 0.05% NaN ₃ , 40% Glycerol
Concentration:	lot specific
Purification:	Antigen affinity purification
Conjugation:	Unconjugated
Storage:	Store at -20°C.
Stability:	1 year
Gene Name:	solute carrier family 8 member B1
Database Link:	Entrez Gene 80024 Human Q6J4K2
Background:	Mitochondrial sodium/calcium antiporter that mediates sodium-dependent calcium efflux from mitochondrion, thereby acting as a key regulator of mitochondrion calcium homeostasis. Regulates rates of glucose-dependent insulin secretion in pancreatic beta-cells during the first phase of insulin secretion: acts by mediating efflux of calcium from mitochondrion, thereby affecting cytoplasmic calcium responses. Able to transport Ca ²⁺ in exchange of either Li ⁺ or Na ⁺ , explaining how Li ⁺ catalyzes Ca ²⁺ exchange. In contrast to other members of the family its function is independent of K ⁺ .



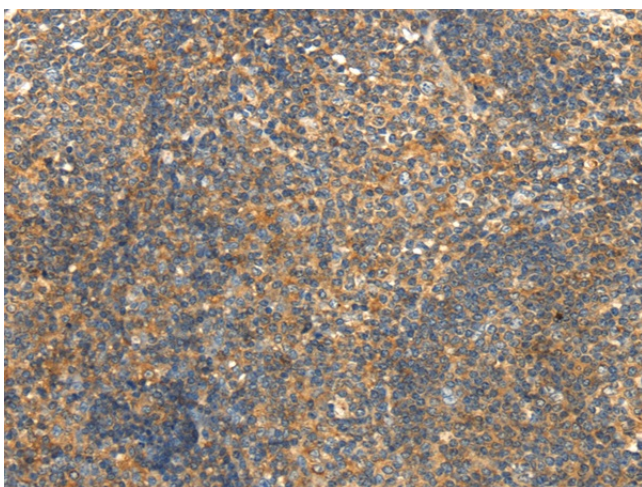
[View online »](#)

Product images:

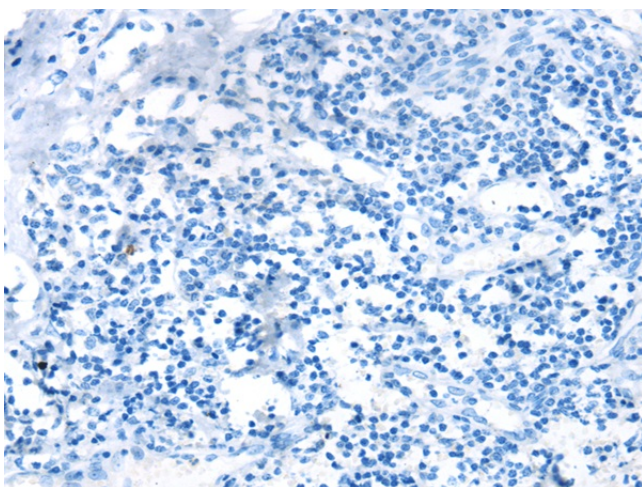
Immunohistochemistry of paraffin-embedded Human liver cancer tissue using TA371516 (SLC8B1 Antibody) at dilution 1/20 (Original magnification: $\times 200$)



Immunohistochemistry of paraffin-embedded Human liver cancer tissue using TA371516 (SLC8B1 Antibody) at dilution 1/20, treated with synthetic peptide. (Original magnification: $\times 200$)



Immunohistochemistry of paraffin-embedded Human tonsil tissue using TA371516 (SLC8B1 Antibody) at dilution 1/20 (Original magnification: ×200)



Immunohistochemistry of paraffin-embedded Human tonsil tissue using TA371516 (SLC8B1 Antibody) at dilution 1/20, treated with synthetic peptide. (Original magnification: ×200)