

## Product datasheet for **TA371513S**

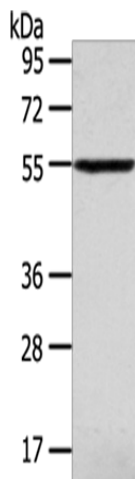
### SLC16A11 Rabbit Polyclonal Antibody

#### Product data:

|                         |  |
|-------------------------|--|
| Product Type:           | Primary Antibodies   |
| Applications:           | WB   |
| Recommended Dilution:   | WB: 200-1000<br>WB positive control: Human normal liver tissue   |
| Reactivity:             | Human, Mouse   |
| Host:                   | Rabbit   |
| Isotype:                | IgG  |
| Clonality:              | Polyclonal   |
| Immunogen:              | Synthetic peptide of human SLC16A11  |
| Formulation:            | pH7.4 PBS, 0.05% NaN <sub>3</sub> , 40% Glycerol   |
| Concentration:          | lot specific   |
| Purification:           | Antigen affinity purification  |
| Conjugation:            | Unconjugated   |
| Storage:                | Store at -20°C.  |
| Stability:              | 1 year   |
| Predicted Protein Size: | 48 kDa   |
| Gene Name:              | solute carrier family 16 member 11   |
| Database Link:          | <a href="#">Entrez Gene 162515 Human Q8NCK7</a>  |
| Background:             | MCT11 (Monocarboxylate transporter 11), also known as SLC16A11 (Solute carrier family 16 member 11), is a 471 proton-linked monocarboxylate transporter that catalyzes the rapid transport of monocarboxylates across the plasma membrane. |
| Synonyms:               | FLJ90193; MCT11  |



[View online »](#)

**Product images:**

Gel: 6%SDS-PAGE  
Lysate: 40 µg  
Lane: Human normal liver tissue  
Primary antibody: [TA371513] (SLC16A11 Antibody) at dilution 1/320  
Secondary antibody: Goat anti rabbit IgG at 1/8000 dilution  
Exposure time: 10 minutes