

Product datasheet for **TA371513**

SLC16A11 Rabbit Polyclonal Antibody

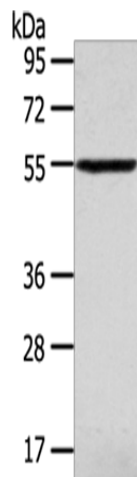
Product data:

Product Type:	Primary Antibodies
Applications:	WB
Recommended Dilution:	WB: 200-1000 WB positive control: Human normal liver tissue
Reactivity:	Human, Mouse
Host:	Rabbit
Isotype:	IgG
Clonality:	Polyclonal
Immunogen:	Synthetic peptide of human SLC16A11
Formulation:	pH7.4 PBS, 0.05% NaN ₃ , 40% Glycerol
Concentration:	lot specific
Purification:	Antigen affinity purification
Conjugation:	Unconjugated
Storage:	Store at -20°C.
Stability:	1 year
Predicted Protein Size:	48 kDa
Gene Name:	solute carrier family 16 member 11
Database Link:	Entrez Gene 162515 Human Q8NCK7
Background:	MCT11 (Monocarboxylate transporter 11), also known as SLC16A11 (Solute carrier family 16 member 11), is a 471 proton-linked monocarboxylate transporter that catalyzes the rapid transport of monocarboxylates across the plasma membrane.
Synonyms:	FLJ90193; MCT11



[View online »](#)

Product images:



Gel: 6%SDS-PAGE
Lysate: 40 μ g
Lane: Human normal liver tissue
Primary antibody: TA371513 (SLC16A11 Antibody)
at dilution 1/320
Secondary antibody: Goat anti rabbit IgG at
1/8000 dilution
Exposure time: 10 minutes