

Product datasheet for **TA371512S**

SLC16A3 Rabbit Polyclonal Antibody

Product data:

Product Type:	Primary Antibodies
Applications:	IHC, WB
Recommended Dilution:	WB: 200-1000 WB positive control: Hepg2 and PC3 cells IHC: 20-100 Positive control: Human brain Predicted cell location: Cytoplasm
Reactivity:	Human, Mouse, Rat
Host:	Rabbit
Isotype:	IgG
Clonality:	Polyclonal
Immunogen:	Synthetic peptide of human SLC16A3
Formulation:	pH7.4 PBS, 0.05% NaN ₃ , 40% Glycerol
Concentration:	lot specific
Purification:	Antigen affinity purification
Conjugation:	Unconjugated
Storage:	Store at -20°C.
Stability:	1 year
Predicted Protein Size:	49 kDa
Gene Name:	solute carrier family 16 member 3
Database Link:	Entrez Gene 9123 Human O15427

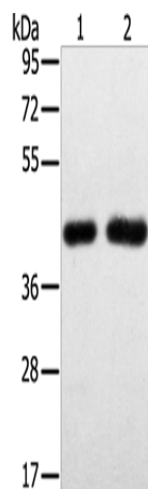
Background: Lactic acid and pyruvate transport across plasma membranes is catalyzed by members of the proton-linked monocarboxylate transporter (MCT) family, which has been designated solute carrier family-16. Each MCT appears to have slightly different substrate and inhibitor specificities and transport kinetics, which are related to the metabolic requirements of the tissues in which it is found. The MCTs, which include MCT1 (SLC16A1; MIM 600682) and MCT2 (SLC16A7; MIM 603654), are characterized by 12 predicted transmembrane domains.



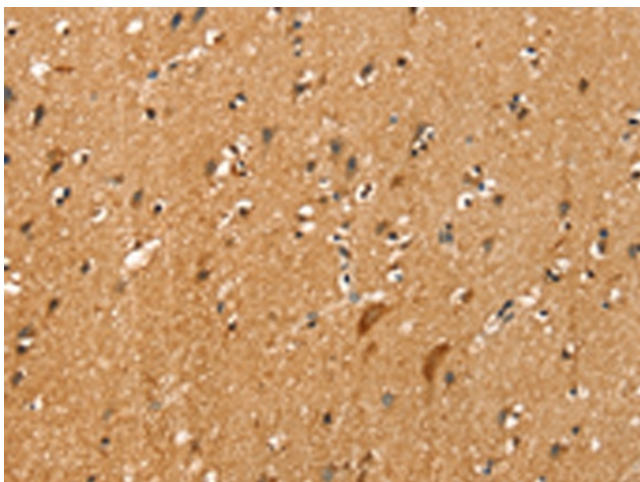
[View online »](#)

Synonyms: MCT3; MCT4; MGC138472; MGC138474

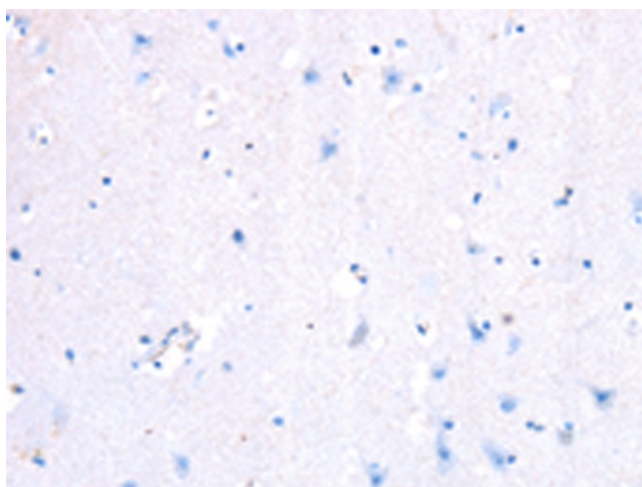
Product images:



Gel: 8%SDS-PAGE
Lysate: 40 μ g
Lane 1-2: Hepg2 cells
PC3 cells
Primary antibody: [TA371512] (SLC16A3
Antibody) at dilution 1/200
Secondary antibody: Goat anti rabbit IgG at
1/8000 dilution
Exposure time: 4 minutes



Immunohistochemistry of paraffin-embedded
Human brain tissue using [TA371512] (SLC16A3
Antibody) at dilution 1/20 (Original magnification:
 \times 200)



Immunohistochemistry of paraffin-embedded Human brain tissue using [TA371512] (SLC16A3 Antibody) at dilution 1/20, treated with synthetic peptide. (Original magnification: $\times 200$)