

Product datasheet for **TA371510S**

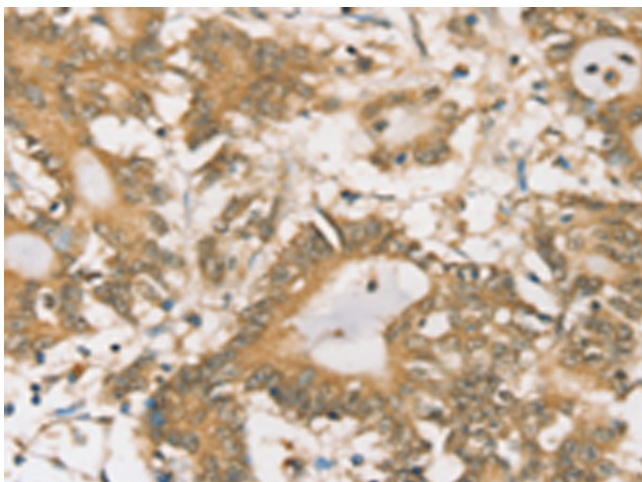
SIGLEC15 Rabbit Polyclonal Antibody

Product data:

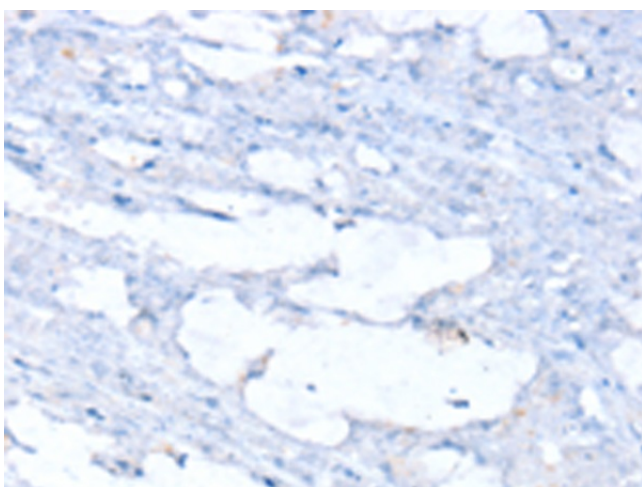
Product Type:	Primary Antibodies
Applications:	IHC
Recommended Dilution:	IHC: 25-100 Positive control: Human colon cancer Predicted cell location: Cytoplasm
Reactivity:	Human
Host:	Rabbit
Isotype:	IgG
Clonality:	Polyclonal
Immunogen:	Synthetic peptide of human SIGLEC15
Formulation:	pH7.4 PBS, 0.05% NaN ₃ , 40% Glycerol
Concentration:	lot specific
Purification:	Antigen affinity purification
Conjugation:	Unconjugated
Storage:	Store at -20°C.
Stability:	1 year
Gene Name:	sialic acid binding Ig like lectin 15
Database Link:	Entrez Gene 284266 Human Q6ZMC9
Background:	Siglec-15 (sialic acid binding Ig-like lectin 15), also known as CD33L3, is a 328 amino acid single-pass type I membrane protein that contains one Ig-like C2-type domain and one Ig-like V-type domain. Expressed in dendritic and macrophage cells, Sinlec-15 interacts with DAP10 and DAP12 and binds to sialylated glycoproteins. The gene encoding Siglec-15 maps to human chromosome 18, which houses over 300 protein-coding genes and contains nearly 76 million bases.
Synonyms:	CD33L3; HsT1361; SIGLEC-15



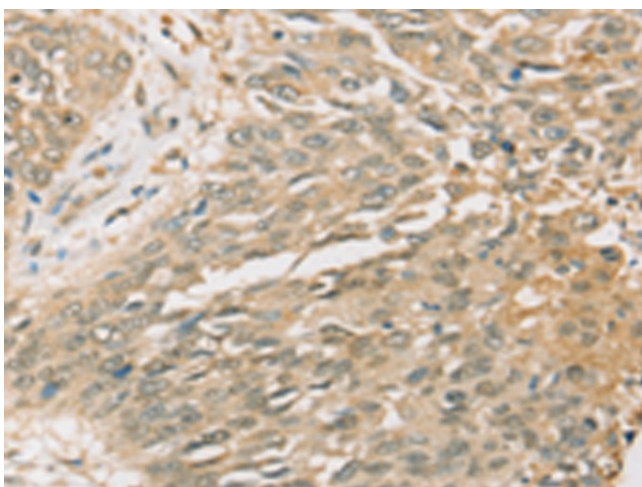
[View online »](#)

Product images:

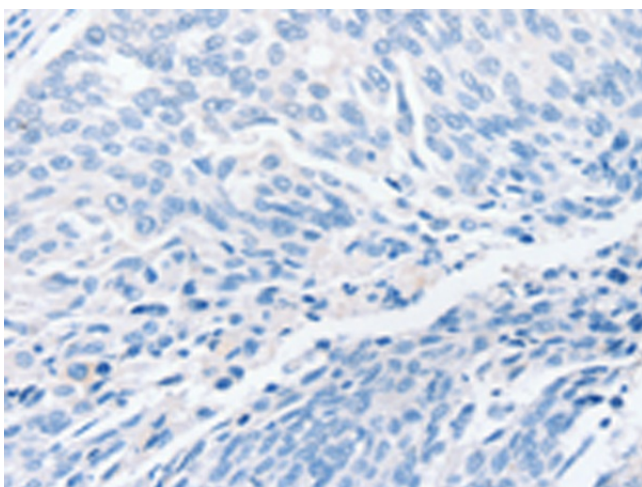
Immunohistochemistry of paraffin-embedded Human colon cancer tissue using [TA371510] (SIGLEC15 Antibody) at dilution 1/35 (Original magnification: $\times 200$)



Immunohistochemistry of paraffin-embedded Human colon cancer tissue using [TA371510] (SIGLEC15 Antibody) at dilution 1/35, treated with synthetic peptide. (Original magnification: $\times 200$)



Immunohistochemistry of paraffin-embedded Human lung cancer tissue using [TA371510] (SIGLEC15 Antibody) at dilution 1/35 (Original magnification: $\times 200$)



Immunohistochemistry of paraffin-embedded Human lung cancer tissue using [TA371510] (SIGLEC15 Antibody) at dilution 1/35, treated with synthetic peptide. (Original magnification: $\times 200$)