

Product datasheet for **TA371503S**

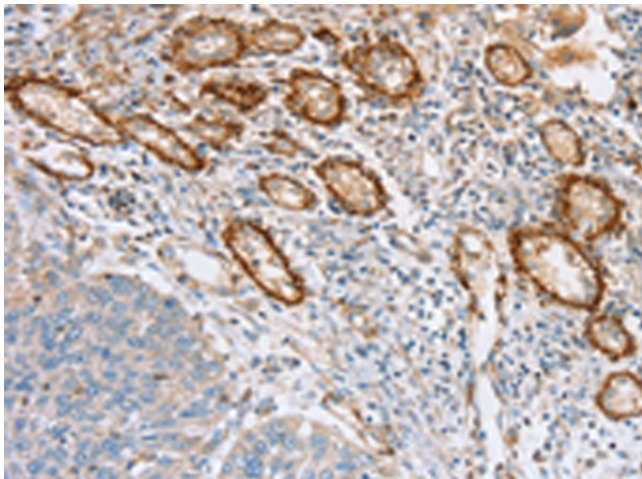
Semaphorin 7a (SEMA7A) Rabbit Polyclonal Antibody

Product data:

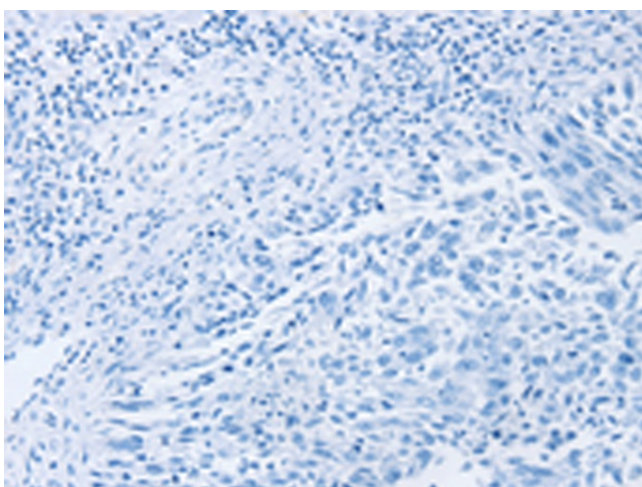
Product Type:	Primary Antibodies
Applications:	IHC
Recommended Dilution:	IHC: 25-100 Positive control: Human lung cancer Predicted cell location: Cytoplasm or Cell membrane
Reactivity:	Human, Mouse
Host:	Rabbit
Isotype:	IgG
Clonality:	Polyclonal
Immunogen:	Synthetic peptide of human SEMA7A
Formulation:	pH7.4 PBS, 0.05% NaN ₃ , 40% Glycerol
Concentration:	lot specific
Purification:	Antigen affinity purification
Conjugation:	Unconjugated
Storage:	Store at -20°C.
Stability:	1 year
Gene Name:	semaphorin 7A (John Milton Hagen blood group)
Database Link:	Entrez Gene 8482 Human O75326
Background:	The protein encoded by this gene binds to cell surfaces through a glycosylphosphatidylinositol (GPI) linkage. The encoded glycoprotein is found on activated lymphocytes and erythrocytes. This protein may be involved in immunomodulatory and neuronal processes. Defects in this gene can result in loss of bone mineral density (BMD). Three transcript variants encoding different isoforms have been found for this gene.
Synonyms:	CD108; CDw108; H-SEMA-K1; H-Sema-L; JMH; MGC126692; MGC126696; SEMAK1; SEMAL; Semaphorin-K1; Semaphorin-L



[View online »](#)

Product images:

Immunohistochemistry of paraffin-embedded Human lung cancer tissue using [TA371503] (SEMA7A Antibody) at dilution 1/35 (Original magnification: $\times 200$)



Immunohistochemistry of paraffin-embedded Human lung cancer tissue using [TA371503] (SEMA7A Antibody) at dilution 1/35, treated with synthetic peptide. (Original magnification: $\times 200$)