

## Product datasheet for **TA371499**

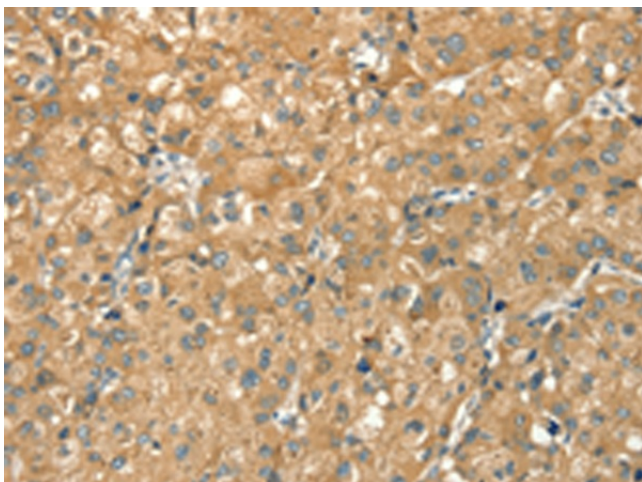
### **SDCCAG10 (CWC27) Rabbit Polyclonal Antibody**

#### **Product data:**

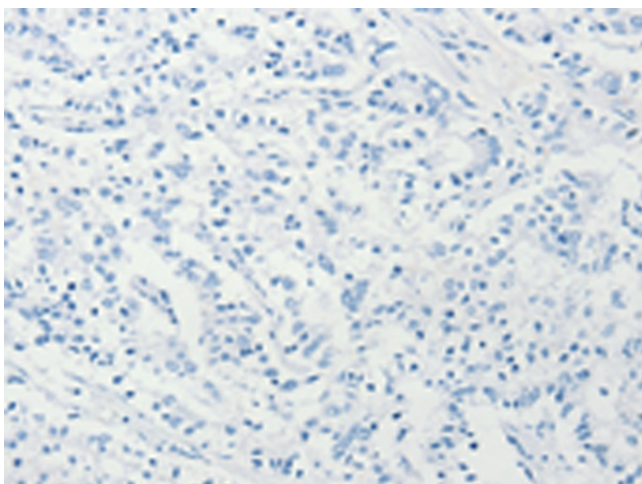
Product Type:	Primary Antibodies
Applications:	IHC
Recommended Dilution:	IHC: 25-100 Positive control: Human liver cancer Predicted cell location: Cytoplasm
Reactivity:	Human, Mouse, Rat
Host:	Rabbit
Isotype:	IgG
Clonality:	Polyclonal
Immunogen:	Synthetic peptide of human CWC27
Formulation:	pH7.4 PBS, 0.05% NaN <sub>3</sub> , 40% Glycerol
Concentration:	lot specific
Purification:	Antigen affinity purification
Conjugation:	Unconjugated
Storage:	Store at -20°C.
Stability:	1 year
Gene Name:	CWC27 spliceosome associated protein homolog
Database Link:	<a href="#">Entrez Gene 10283 Human Q6UX04</a>
Background:	As part of the spliceosome, plays a role in pre-mRNA splicing (PubMed:29360106). Probable inactive PPIase with no peptidyl-prolyl cis-trans isomerase activity (PubMed:20676357).
Synonyms:	NY-CO-10; SDCCAG10



[View online »](#)

**Product images:**

Immunohistochemistry of paraffin-embedded Human liver cancer tissue using TA371499 (CWC27 Antibody) at dilution 1/20 (Original magnification:  $\times 200$ )



Immunohistochemistry of paraffin-embedded Human liver cancer tissue using TA371499 (CWC27 Antibody) at dilution 1/20, treated with synthetic peptide. (Original magnification:  $\times 200$ )