

Product datasheet for **TA371497S**

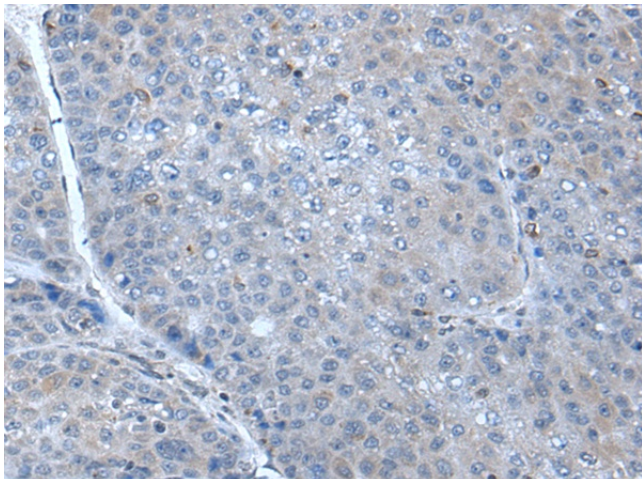
SCGB3A1 Rabbit Polyclonal Antibody

Product data:

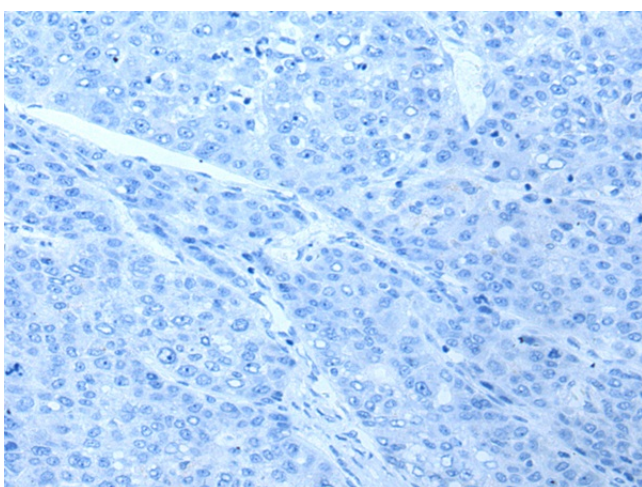
Product Type:	Primary Antibodies
Applications:	IHC
Recommended Dilution:	IHC: 25-100 Positive control: Human liver cancer Predicted cell location: Secreted
Reactivity:	Human, Mouse
Host:	Rabbit
Isotype:	IgG
Clonality:	Polyclonal
Immunogen:	Synthetic peptide of human SCGB3A1
Formulation:	pH7.4 PBS, 0.05% NaN ₃ , 40% Glycerol
Concentration:	lot specific
Purification:	Antigen affinity purification
Conjugation:	Unconjugated
Storage:	Store at -20°C.
Stability:	1 year
Gene Name:	secretoglobin family 3A member 1
Database Link:	Entrez Gene 92304 Human Q96QR1
Background:	Potential growth inhibitory cytokine.
Synonyms:	HIN-1; HIN1; LU105; MGC87867; PnSP-2; PNSP2; UGRP2



[View online »](#)

Product images:

Immunohistochemistry of paraffin-embedded Human liver cancer tissue using [TA371497] (SCGB3A1 Antibody) at dilution 1/25 (Original magnification: $\times 200$)



Immunohistochemistry of paraffin-embedded Human liver cancer tissue using [TA371497] (SCGB3A1 Antibody) at dilution 1/25, treated with synthetic peptide. (Original magnification: $\times 200$)