

Product datasheet for **TA371491**

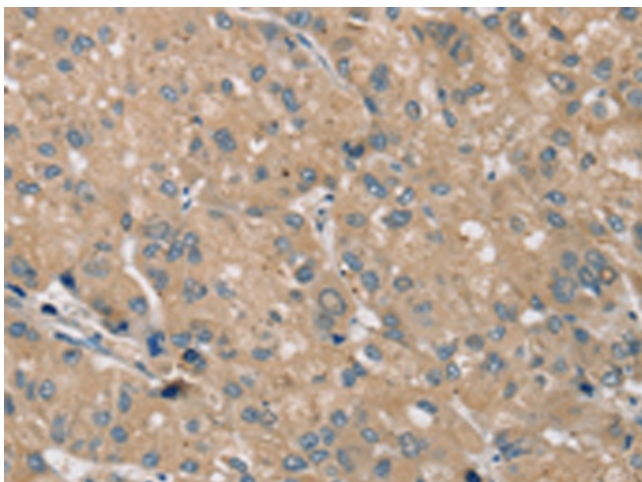
JM4 (PRAF2) Rabbit Polyclonal Antibody

Product data:

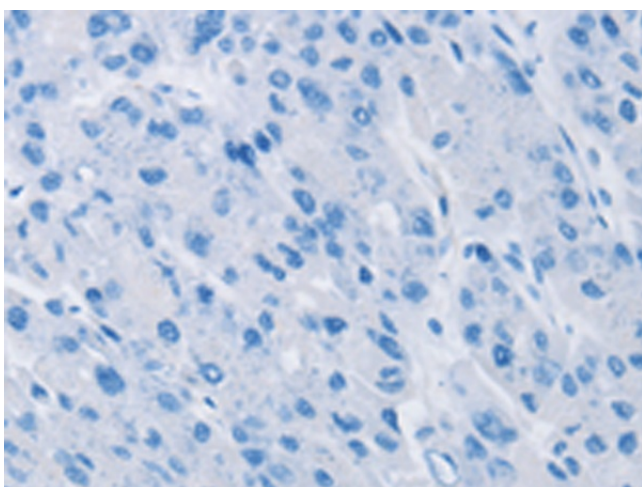
Product Type:	Primary Antibodies
Applications:	IHC
Recommended Dilution:	IHC: 25-100 Positive control: Human liver cancer Predicted cell location: Cytoplasm
Reactivity:	Human, Mouse
Host:	Rabbit
Isotype:	IgG
Clonality:	Polyclonal
Immunogen:	Synthetic peptide of human PRAF2
Formulation:	pH7.4 PBS, 0.05% NaN ₃ , 40% Glycerol
Concentration:	lot specific
Purification:	Antigen affinity purification
Conjugation:	Unconjugated
Storage:	Store at -20°C.
Stability:	1 year
Gene Name:	PRA1 domain family member 2
Database Link:	Entrez Gene 11230 Human O60831
Background:	JM4 (Jena-Muenchen 4), also known as PRAF2 (PRA1 domain family, member 2), is a 178 amino acid endosomal multi-pass membrane protein involved in vesicular trafficking and Endoplasmic reticulum/Golgi transport. As a member of the PRA1 family, JM4 contains four putative transmembrane (TM) domains, interacts with the CC chemokine receptor 5 (CCR5) and colocalizes with Calnexin in the ER and mannose 6-phosphate receptor (CD-MPR) in the Golgi apparatus.
Synonyms:	JM4



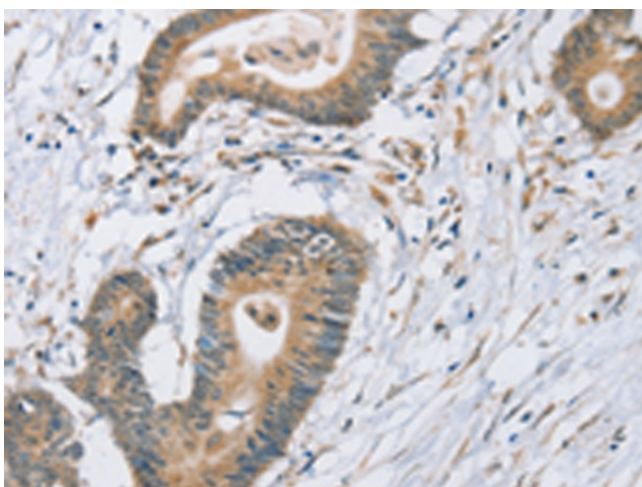
[View online »](#)

Product images:

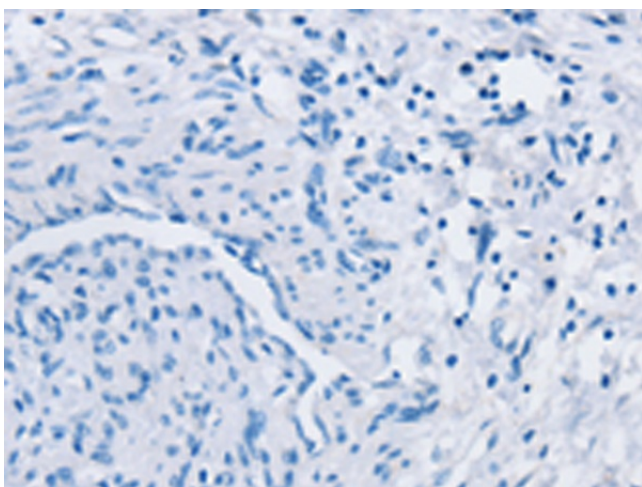
Immunohistochemistry of paraffin-embedded Human liver cancer tissue using TA371491 (PRAF2 Antibody) at dilution 1/35 (Original magnification: $\times 200$)



Immunohistochemistry of paraffin-embedded Human liver cancer tissue using TA371491 (PRAF2 Antibody) at dilution 1/35, treated with synthetic peptide. (Original magnification: $\times 200$)



Immunohistochemistry of paraffin-embedded Human colon cancer tissue using TA371491 (PRAF2 Antibody) at dilution 1/35 (Original magnification: $\times 200$)



Immunohistochemistry of paraffin-embedded Human colon cancer tissue using TA371491 (PRAF2 Antibody) at dilution 1/35, treated with synthetic peptide. (Original magnification: $\times 200$)