

## Product datasheet for **TA371490S**

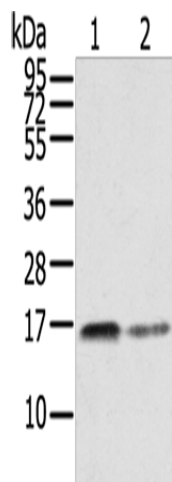
### RRAS Rabbit Polyclonal Antibody

#### Product data:

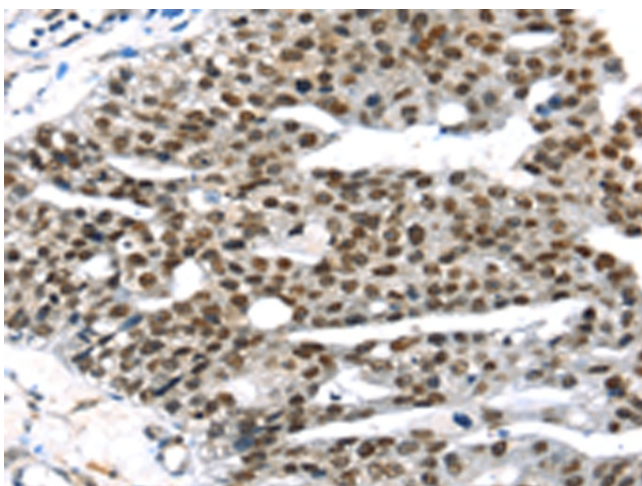
Product Type:	Primary Antibodies
Applications:	IHC, WB
Recommended Dilution:	WB: 500-2000 WB positive control: PC3 and A549 cells IHC: 25-100 Positive control: Human breast cancer Predicted cell location: Cytoplasm and Nucleus
Reactivity:	Human, Mouse, Rat
Host:	Rabbit
Isotype:	IgG
Clonality:	Polyclonal
Immunogen:	Synthetic peptide of human RRAS
Formulation:	pH7.4 PBS, 0.05% NaN <sub>3</sub> , 40% Glycerol
Concentration:	lot specific
Purification:	Antigen affinity purification
Conjugation:	Unconjugated
Storage:	Store at -20°C.
Stability:	1 year
Predicted Protein Size:	23 kDa
Gene Name:	related RAS viral (r-ras) oncogene homolog
Database Link:	<a href="#">Entrez Gene 6237 Human P10301</a>
Background:	The R-Ras protein has been shown to interact with the Bcl-2 gene product involved in a signaling pathway that intervenes with apoptosis. Positions 38 and 87 (analogous to positions 12 and 61 in H-Ras) mutants of R-Ras have been shown to be capable of activating oncogenic function. Data has been obtained indicating that R-Ras may exert its biological effect by means of modulating the activity of the Raf-1 kinase on its direct downstream effectors.
Synonyms:	p23



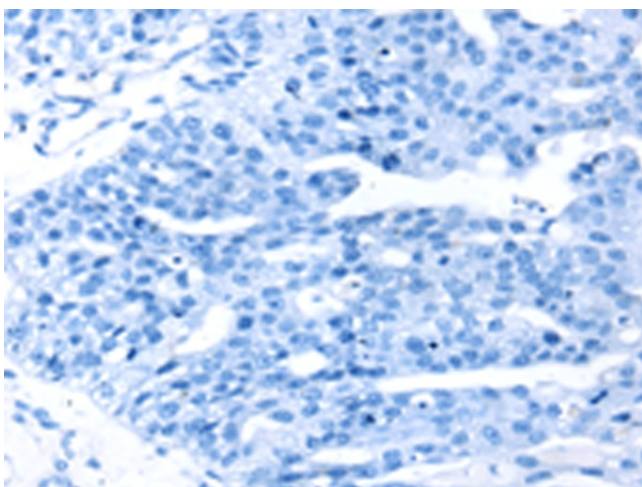
[View online »](#)

**Product images:**

Gel: 6%SDS-PAGE  
Lysate: 40 µg  
Lane 1-2: PC3 cells  
A549 cells  
Primary antibody: [TA371490] (RRAS Antibody) at dilution 1/350  
Secondary antibody: Goat anti rabbit IgG at 1/8000 dilution  
Exposure time: 30 seconds



Immunohistochemistry of paraffin-embedded Human breast cancer tissue using [TA371490] (RRAS Antibody) at dilution 1/25 (Original magnification: ×200)



Immunohistochemistry of paraffin-embedded Human breast cancer tissue using [TA371490] (RRAS Antibody) at dilution 1/25, treated with synthetic peptide. (Original magnification:  $\times 200$ )