

Product datasheet for **TA371483S**

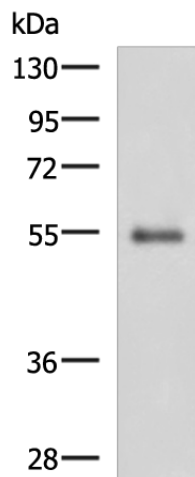
RHCG Rabbit Polyclonal Antibody

Product data:

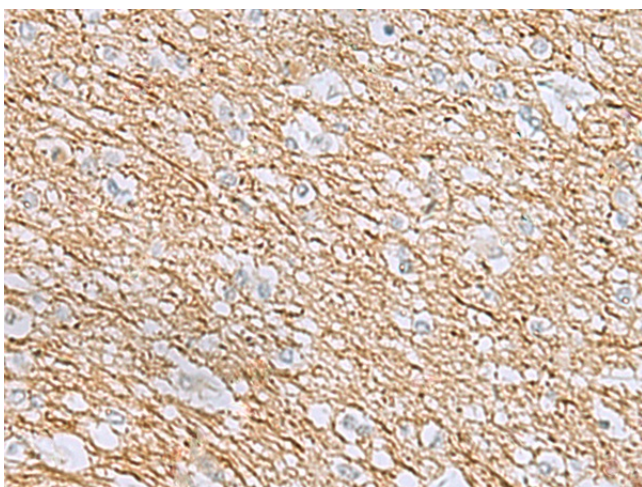
Product Type:	Primary Antibodies
Applications:	IHC, WB
Recommended Dilution:	WB: 500-2000 WB positive control: Human 2-3 grade invasive ductal breast tissue lysate IHC: 25-50 Positive control: Human brain Predicted cell location: Cell membrane
Reactivity:	Human
Host:	Rabbit
Isotype:	IgG
Clonality:	Polyclonal
Immunogen:	Synthetic peptide of human RHCG
Formulation:	pH7.4 PBS, 0.05% NaN ₃ , 40% Glycerol
Concentration:	lot specific
Purification:	Antigen affinity purification
Conjugation:	Unconjugated
Storage:	Store at -20°C.
Stability:	1 year
Predicted Protein Size:	53 kDa
Gene Name:	Rh family C glycoprotein
Database Link:	Entrez Gene 51458 Human Q9UBD6
Background:	Functions as an electroneutral and bidirectional ammonium transporter. May regulate transepithelial ammonia secretion.
Synonyms:	C15orf6; CDRC2; PDRC2; RHGK; SLC42A3



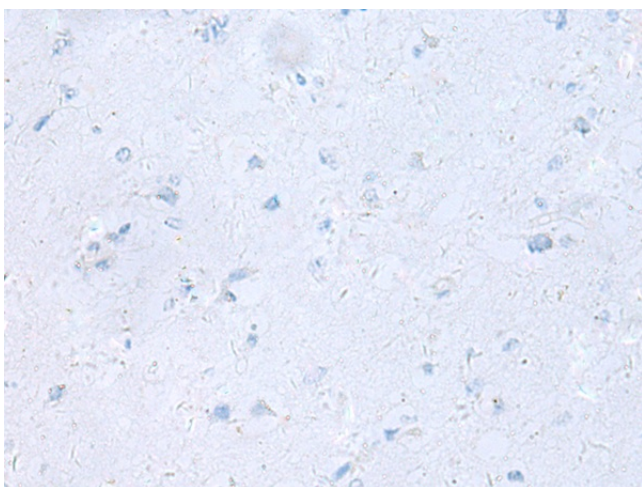
[View online »](#)

Product images:

Gel: 8%SDS-PAGE
Lysate: 40 μ g
Lane: Human 2-3 grade invasive ductal breast tissue lysate
Primary antibody: [TA371483] (RHCG Antibody) at dilution 1/900
Secondary antibody: Goat anti rabbit IgG at 1/5000 dilution
Exposure time: 5 minutes



Immunohistochemistry of paraffin-embedded Human brain tissue using [TA371483] (RHCG Antibody) at dilution 1/40 (Original magnification: \times 200)



Immunohistochemistry of paraffin-embedded Human brain tissue using [TA371483] (RHCG Antibody) at dilution 1/40, treated with synthetic peptide. (Original magnification: $\times 200$)