

## Product datasheet for **TA371481S**

### Zinc finger MIZ domain containing protein 1 (ZMIZ1) Rabbit Polyclonal Antibody

#### Product data:

Product Type:	Primary Antibodies
Applications:	IHC, WB
Recommended Dilution:	WB: 200-1000 WB positive control: 293T cells IHC: 25-100 Positive control: Human breast cancer Predicted cell location: Cytoplasm or Nucleus
Reactivity:	Human, Mouse
Host:	Rabbit
Isotype:	IgG
Clonality:	Polyclonal
Immunogen:	Synthetic peptide of human ZMIZ1
Formulation:	pH7.4 PBS, 0.05% NaN <sub>3</sub> , 40% Glycerol
Concentration:	lot specific
Purification:	Antigen affinity purification
Conjugation:	Unconjugated
Storage:	Store at -20°C.
Stability:	1 year
Predicted Protein Size:	115 kDa
Gene Name:	zinc finger MIZ-type containing 1
Database Link:	<a href="#">Entrez Gene 57178 Human Q9ULJ6</a>

**Background:** This gene encodes a member of the PIAS (protein inhibitor of activated STAT) family of proteins. The encoded protein regulates the activity of various transcription factors, including the androgen receptor, Smad3/4, and p53. The encoded protein may also play a role in sumoylation. A translocation between this locus on chromosome 10 and the protein tyrosine kinase ABL1 locus on chromosome 9 has been associated with acute lymphoblastic leukemia.



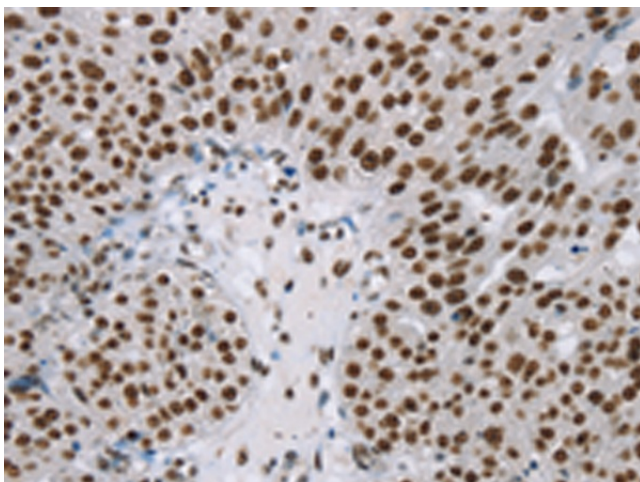
[View online »](#)

Synonyms: FLJ13541; hZIMP10; KIAA1224; MIZ; RAI17; RP11-519K18.1; Zimp10

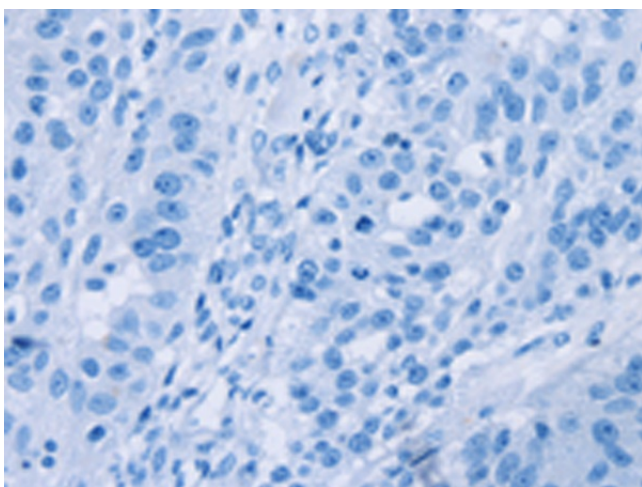
### Product images:



Gel: 6%SDS-PAGE  
Lysate: 40  $\mu$ g  
Lane: 293T cells  
Primary antibody: [TA371481] (ZMIZ1 Antibody) at dilution 1/200  
Secondary antibody: Goat anti rabbit IgG at 1/8000 dilution  
Exposure time: 2 minutes



Immunohistochemistry of paraffin-embedded Human breast cancer tissue using [TA371481] (ZMIZ1 Antibody) at dilution 1/20 (Original magnification:  $\times$ 200)



Immunohistochemistry of paraffin-embedded Human breast cancer tissue using [TA371481] (ZMIZ1 Antibody) at dilution 1/20, treated with synthetic peptide. (Original magnification: ×200)