

## Product datasheet for **TA371471S**

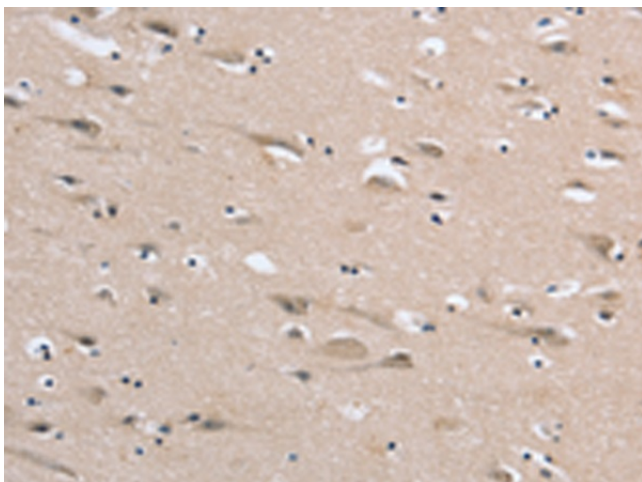
### PSD93 (DLG2) Rabbit Polyclonal Antibody

#### Product data:

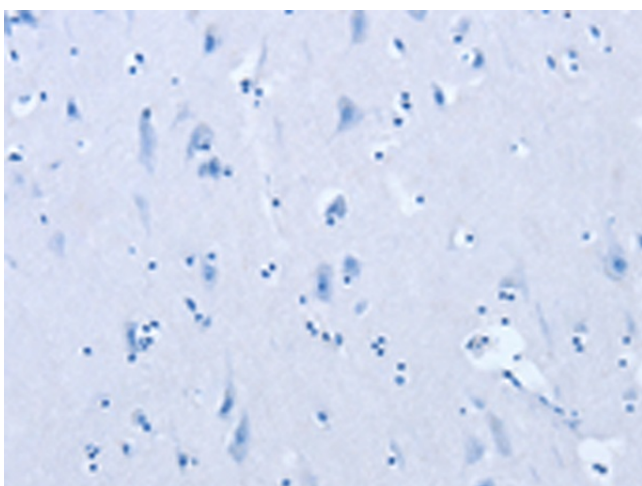
Product Type:	Primary Antibodies
Applications:	IHC
Recommended Dilution:	IHC: 50-200 Positive control: Human brain Predicted cell location: Nucleus
Reactivity:	Human
Host:	Rabbit
Isotype:	IgG
Clonality:	Polyclonal
Immunogen:	Synthetic peptide of human DLG2
Formulation:	pH7.4 PBS, 0.05% NaN <sub>3</sub> , 40% Glycerol
Concentration:	lot specific
Purification:	Antigen affinity purification
Conjugation:	Unconjugated
Storage:	Store at -20°C.
Stability:	1 year
Gene Name:	discs large MAGUK scaffold protein 2
Database Link:	<a href="#">Entrez Gene 1740 Human Q15700</a>
Background:	This gene encodes a member of the membrane-associated guanylate kinase (MAGUK) family. The encoded protein forms a heterodimer with a related family member that may interact at postsynaptic sites to form a multimeric scaffold for the clustering of receptors, ion channels, and associated signaling proteins. Multiple transcript variants encoding different isoforms have been found for this gene. Additional transcript variants have been described, but their full-length nature is not known.
Synonyms:	chapsyn-110; DKFZp781D1854; DKFZp781E0954; FLJ37266; MGC131811; OTTHUMP00000165971; PSD-93; PSD93



[View online »](#)

**Product images:**

Immunohistochemistry of paraffin-embedded Human brain tissue using [TA371471] (DLG2 Antibody) at dilution 1/35 (Original magnification: ×200)



Immunohistochemistry of paraffin-embedded Human brain tissue using [TA371471] (DLG2 Antibody) at dilution 1/35, treated with synthetic peptide. (Original magnification: ×200)