

Product datasheet for **TA371464**

PGC1 alpha (PPARGC1A) Rabbit Polyclonal Antibody

Product data:

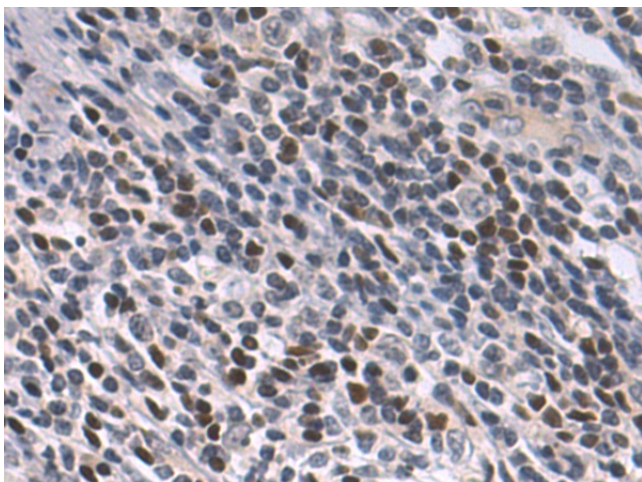
Product Type:	Primary Antibodies
Applications:	IHC
Recommended Dilution:	IHC: 50-100 Positive control: Human cervical cancer Predicted cell location: Nucleus
Reactivity:	Human, Mouse, Rat
Host:	Rabbit
Isotype:	IgG
Clonality:	Polyclonal
Immunogen:	Synthetic peptide of human PPARGC1A
Formulation:	pH7.4 PBS, 0.05% NaN ₃ , 40% Glycerol
Concentration:	lot specific
Purification:	Antigen affinity purification
Conjugation:	Unconjugated
Storage:	Store at -20°C.
Stability:	1 year
Gene Name:	PPARG coactivator 1 alpha
Database Link:	Entrez Gene 10891 Human Q9UBK2

Background: The protein encoded by this gene is a transcriptional coactivator that regulates the genes involved in energy metabolism. This protein interacts with PPARGgamma, which permits the interaction of this protein with multiple transcription factors. This protein can interact with, and regulate the activities of, cAMP response element binding protein (CREB) and nuclear respiratory factors (NRFs). It provides a direct link between external physiological stimuli and the regulation of mitochondrial biogenesis, and is a major factor that regulates muscle fiber type determination. This protein may be also involved in controlling blood pressure, regulating cellular cholesterol homeostasis, and the development of obesity.

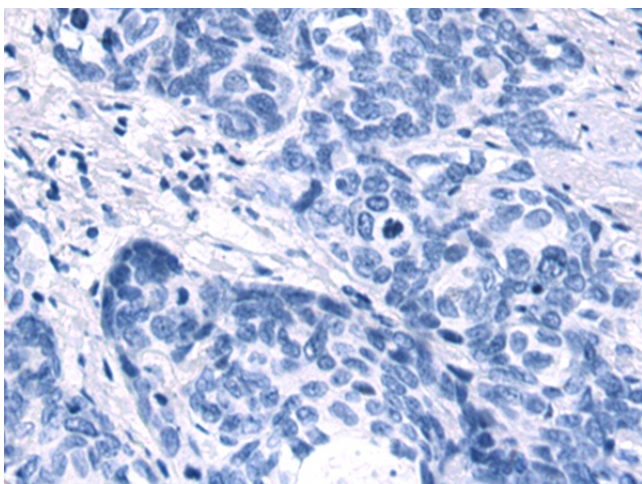
Synonyms: LEM6; PGC-1(alpha); PGC-1-alpha; PGC-1v; PGC1; PGC1A; PPARGC-1-alpha; PPARGC1



[View online »](#)

Product images:

Immunohistochemistry of paraffin-embedded Human cervical cancer tissue using TA371464 (PPARGC1A Antibody) at dilution 1/50 (Original magnification: $\times 200$)



Immunohistochemistry of paraffin-embedded Human cervical cancer tissue using TA371464 (PPARGC1A Antibody) at dilution 1/50, treated with synthetic peptide. (Original magnification: $\times 200$)