

Product datasheet for **TA371449**

NPR2L (NPRL2) Rabbit Polyclonal Antibody

Product data:

Product Type:	Primary Antibodies
Applications:	IHC
Recommended Dilution:	IHC: 50-200 Positive control: Human liver cancer Predicted cell location: Cytoplasm
Reactivity:	Human, Mouse
Host:	Rabbit
Isotype:	IgG
Clonality:	Polyclonal
Immunogen:	Synthetic peptide of human NPRL2
Formulation:	pH7.4 PBS, 0.05% NaN ₃ , 40% Glycerol
Concentration:	lot specific
Purification:	Antigen affinity purification
Conjugation:	Unconjugated
Storage:	Store at -20°C.
Stability:	1 year
Gene Name:	NPR2-like, GATOR1 complex subunit
Database Link:	Entrez Gene 10641 Human Q8WTW4

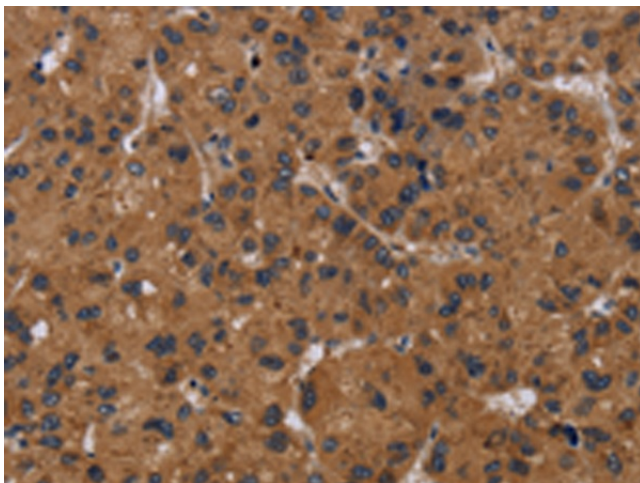
Background: NPRL2, also known as TUSC4 (tumor suppressor candidate 4), is a 380 amino acid protein that contains a bipartite nuclear localization signal and a granulin protein-binding domain. It is highly expressed in skeletal muscle, followed by brain, liver and pancreas, with lower expression in lung, kidney, placenta and heart. NPRL2 is also expressed in most lung cancer cell lines and may be involved in tumor suppression. NPRL2 may play a role in mismatch repair, cell cycle checkpoint signaling and activation of apoptotic pathways. It may also enhance the therapeutic efficacy of chemotherapy drugs such as cis-platin by resensitizing patients resistant to cisplatin treatment. The gene encoding NPRL2 is conserved between species and is expressed as two isoforms due to alternative splicing events.



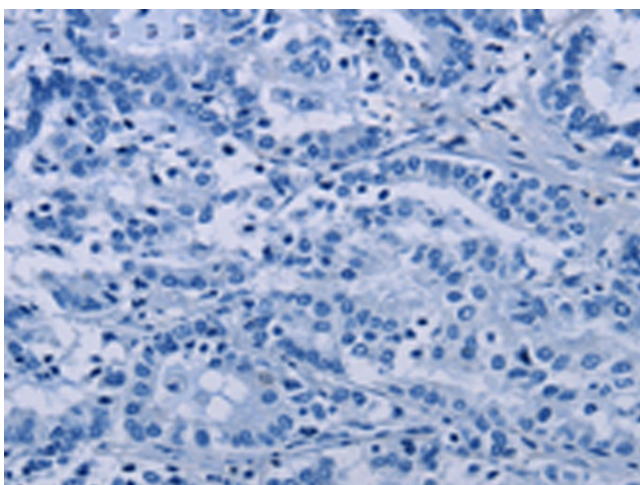
[View online »](#)

Synonyms: NPR2; NPR2L; TUSC4

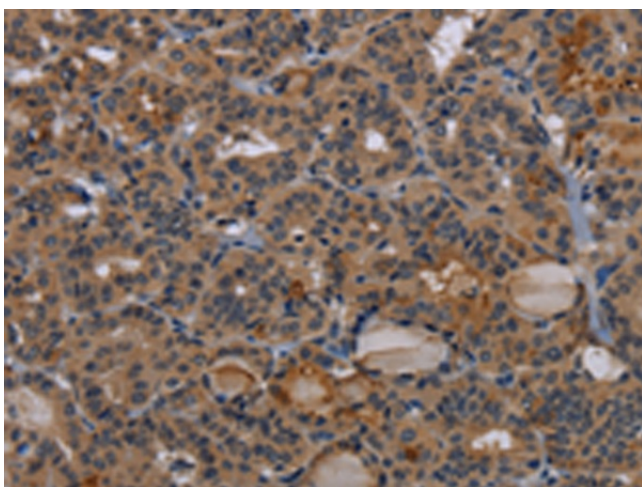
Product images:



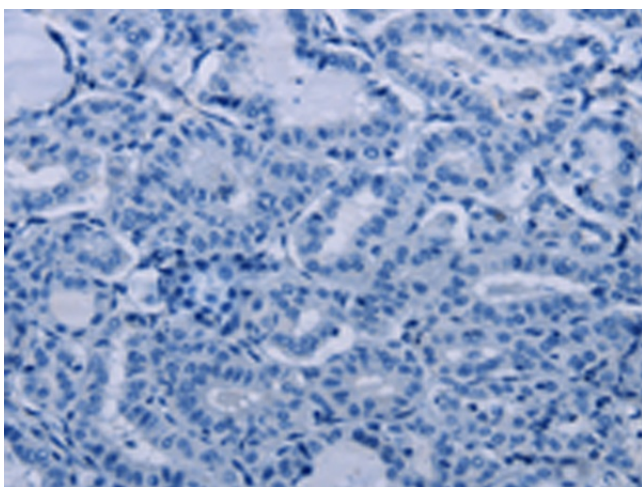
Immunohistochemistry of paraffin-embedded Human liver cancer tissue using TA371449 (NPRL2 Antibody) at dilution 1/50 (Original magnification: $\times 200$)



Immunohistochemistry of paraffin-embedded Human liver cancer tissue using TA371449 (NPRL2 Antibody) at dilution 1/50, treated with synthetic peptide. (Original magnification: $\times 200$)



Immunohistochemistry of paraffin-embedded Human thyroid cancer tissue using TA371449 (NPRL2 Antibody) at dilution 1/50 (Original magnification: $\times 200$)



Immunohistochemistry of paraffin-embedded Human thyroid cancer tissue using TA371449 (NPRL2 Antibody) at dilution 1/50, treated with synthetic peptide. (Original magnification: $\times 200$)