

## Product datasheet for **TA371445**

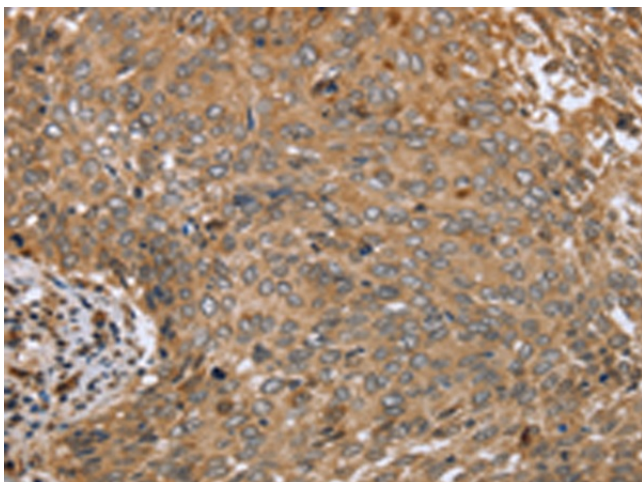
### CLEC16A Rabbit Polyclonal Antibody

#### Product data:

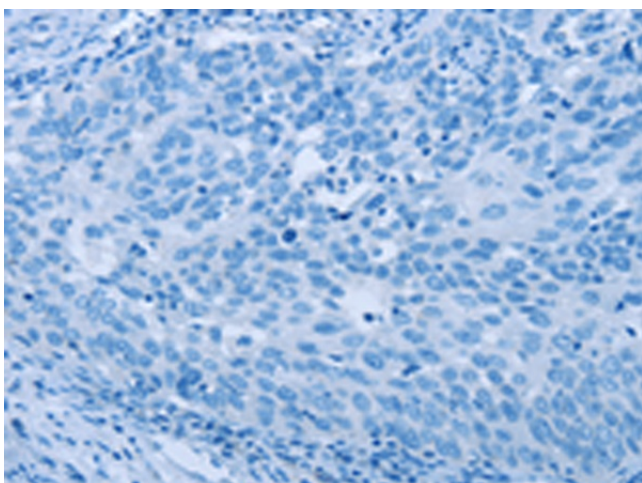
Product Type:	Primary Antibodies
Applications:	IHC
Recommended Dilution:	IHC: 50-200 Positive control: Human cervical cancer Predicted cell location: Cytoplasm
Reactivity:	Human
Host:	Rabbit
Isotype:	IgG
Clonality:	Polyclonal
Immunogen:	Synthetic peptide of human CLEC16A
Formulation:	pH7.4 PBS, 0.05% NaN <sub>3</sub> , 40% Glycerol
Concentration:	lot specific
Purification:	Antigen affinity purification
Conjugation:	Unconjugated
Storage:	Store at -20°C.
Stability:	1 year
Gene Name:	C-type lectin domain family 16 member A
Database Link:	<a href="#">Entrez Gene 23274 Human Q2KHT3</a>
Background:	This gene encodes a member of the C-type lectin domain containing family. Single nucleotide polymorphisms in introns of this gene have been associated with diabetes mellitus, multiple sclerosis and rheumatoid arthritis. Multiple transcript variants encoding different isoforms have been found for this gene.
Synonyms:	Gop-1; KIAA0350; MGC111457



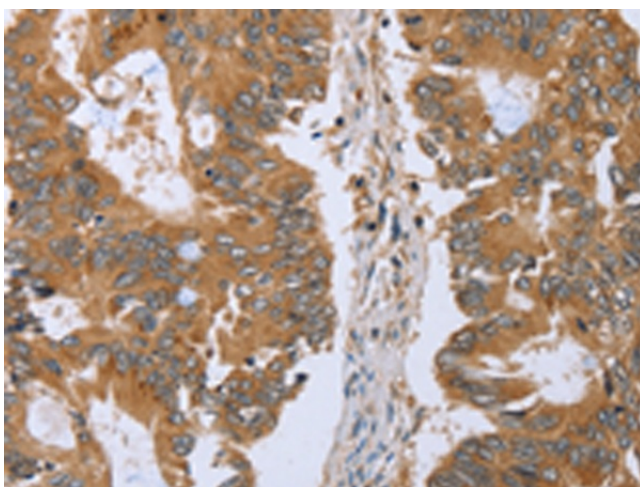
[View online »](#)

**Product images:**

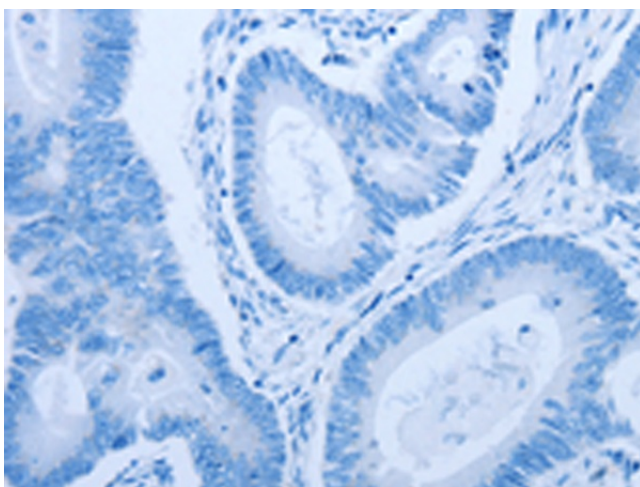
Immunohistochemistry of paraffin-embedded Human cervical cancer tissue using TA371445 (CLEC16A Antibody) at dilution 1/45 (Original magnification: ×200)



Immunohistochemistry of paraffin-embedded Human cervical cancer tissue using TA371445 (CLEC16A Antibody) at dilution 1/45, treated with synthetic peptide. (Original magnification: ×200)



Immunohistochemistry of paraffin-embedded Human colon cancer tissue using TA371445 (CLEC16A Antibody) at dilution 1/45 (Original magnification:  $\times 200$ )



Immunohistochemistry of paraffin-embedded Human colon cancer tissue using TA371445 (CLEC16A Antibody) at dilution 1/45, treated with synthetic peptide. (Original magnification:  $\times 200$ )