

Product datasheet for **TA371440**

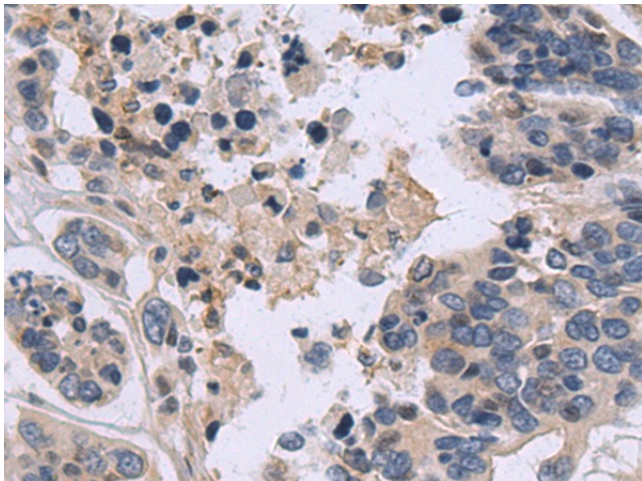
Nucleobindin 2 (NUCB2) Rabbit Polyclonal Antibody

Product data:

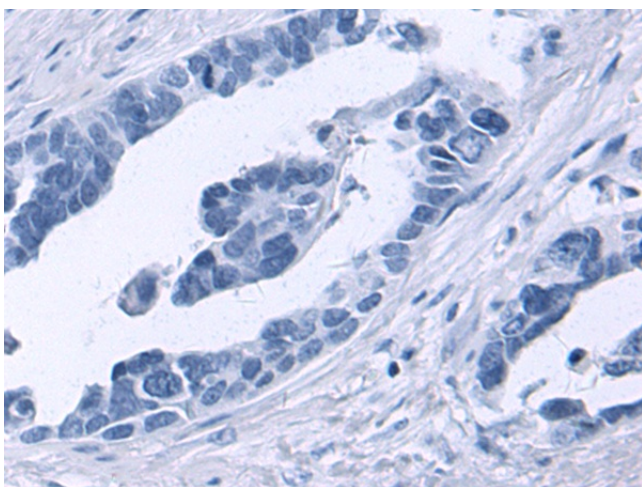
| | |
|-----------------------|---|
| Product Type: | Primary Antibodies |
| Applications: | IHC |
| Recommended Dilution: | IHC: 50-100 Positive control: Human colorectal cancer Predicted cell location: Secreted |
| Reactivity: | Human |
| Host: | Rabbit |
| Isotype: | IgG |
| Clonality: | Polyclonal |
| Immunogen: | Synthetic peptide of human NUCB2 |
| Formulation: | pH7.4 PBS, 0.05% NaN ₃ , 40% Glycerol |
| Concentration: | lot specific |
| Purification: | Antigen affinity purification |
| Conjugation: | Unconjugated |
| Storage: | Store at -20°C. |
| Stability: | 1 year |
| Gene Name: | nucleobindin 2 |
| Database Link: | Entrez Gene 4925 Human P80303 |
| Background: | This gene encodes a protein with a suggested role in calcium level maintenance, eating regulation in the hypothalamus, and release of tumor necrosis factor from vascular endothelial cells. This protein binds calcium and has EF-folding domains. |
| Synonyms: | NEFA |



[View online »](#)

Product images:

Immunohistochemistry of paraffin-embedded Human colorectal cancer tissue using TA371440 (NUCB2 Antibody) at dilution 1/50 (Original magnification: ×200)



Immunohistochemistry of paraffin-embedded Human colorectal cancer tissue using TA371440 (NUCB2 Antibody) at dilution 1/50, treated with synthetic peptide. (Original magnification: ×200)