

Product datasheet for **TA371429**

MMP20 Rabbit Polyclonal Antibody

Product data:

Product Type:	Primary Antibodies
Applications:	IHC, WB
Recommended Dilution:	WB: 200-1000 WB positive control: Mouse brain tissue and 823 cells IHC: 50-200 Positive control: Human ovarian cancer Predicted cell location: Cytoplasm
Reactivity:	Human, Mouse
Host:	Rabbit
Isotype:	IgG
Clonality:	Polyclonal
Immunogen:	Synthetic peptide of human MMP20
Formulation:	pH7.4 PBS, 0.05% NaN ₃ , 40% Glycerol
Concentration:	lot specific
Purification:	Antigen affinity purification
Conjugation:	Unconjugated
Storage:	Store at -20°C.
Stability:	1 year
Predicted Protein Size:	54 kDa
Gene Name:	matrix metalloproteinase 20
Database Link:	Entrez Gene 9313 Human O60882



[View online »](#)

Background:

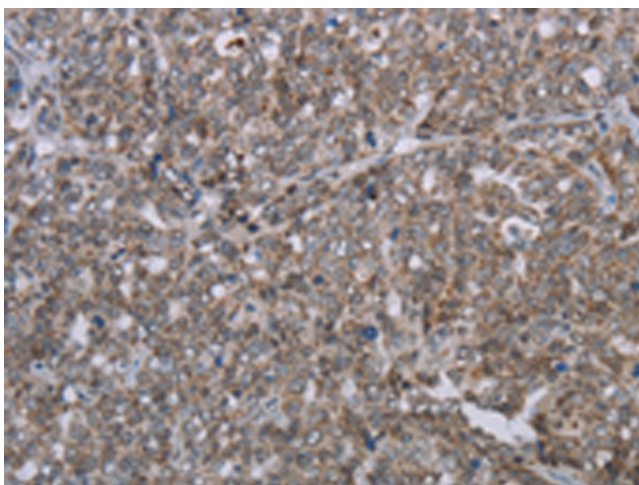
Proteins of the matrix metalloproteinase (MMP) family are involved in the breakdown of extracellular matrix in normal physiological processes, such as embryonic development, reproduction, and tissue remodeling, as well as in disease processes, such as arthritis and metastasis. Most MMP's are secreted as inactive proproteins which are activated when cleaved by extracellular proteinases. The protein encoded by this gene degrades amelogenin, the major protein component of dental enamel matrix, and thus thought to play a role in tooth enamel formation. A mutation in this gene, which alters the normal splice pattern and results in premature termination of the encoded protein, has been associated with amelogenesis imperfecta. This gene is part of a cluster of MMP genes located on chromosome 11q22.3.

Synonyms:

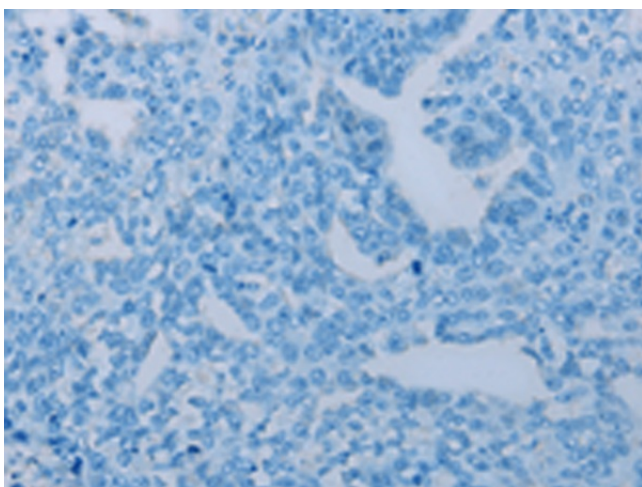
AI2A2; Enamelysin; MMP-20

Product images:

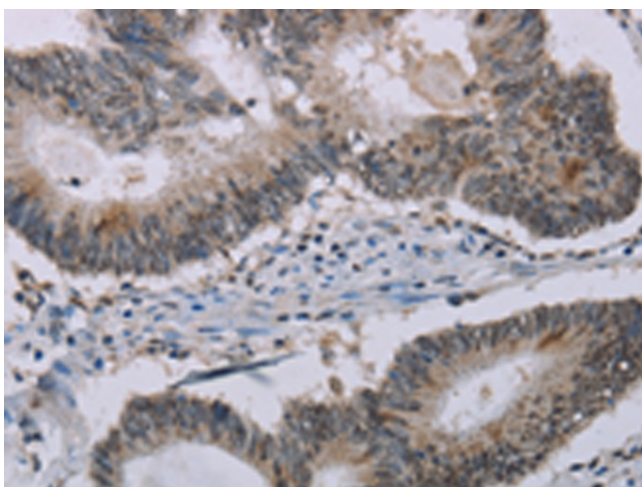

Gel: 8%SDS-PAGE
 Lysate: 40 µg
 Lane 1-2: Mouse brain tissue
 823 cells
 Primary antibody: TA371429 (MMP20 Antibody)
 at dilution 1/250
 Secondary antibody: Goat anti rabbit IgG at
 1/8000 dilution
 Exposure time: 20 seconds



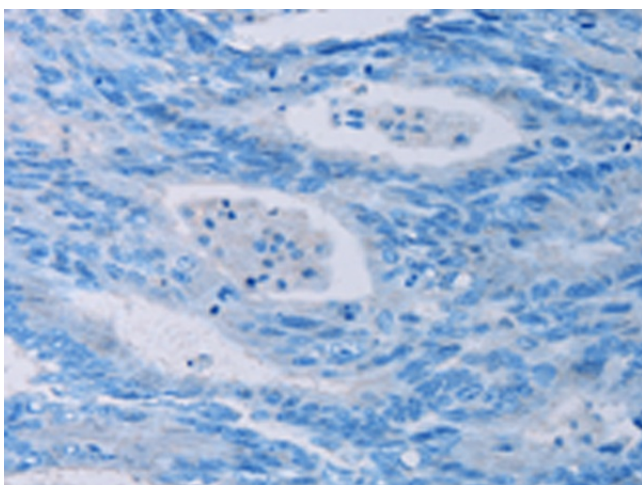
Immunohistochemistry of paraffin-embedded
 Human ovarian cancer tissue using TA371429
 (MMP20 Antibody) at dilution 1/30 (Original
 magnification: ×200)



Immunohistochemistry of paraffin-embedded Human ovarian cancer tissue using TA371429 (MMP20 Antibody) at dilution 1/30, treated with synthetic peptide. (Original magnification: $\times 200$)



Immunohistochemistry of paraffin-embedded Human colon cancer tissue using TA371429 (MMP20 Antibody) at dilution 1/30 (Original magnification: $\times 200$)



Immunohistochemistry of paraffin-embedded Human colon cancer tissue using TA371429 (MMP20 Antibody) at dilution 1/30, treated with synthetic peptide. (Original magnification: $\times 200$)