

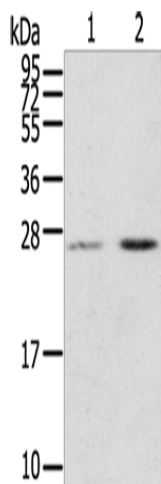
Product datasheet for **TA371426**

MIG7 Rabbit Polyclonal Antibody

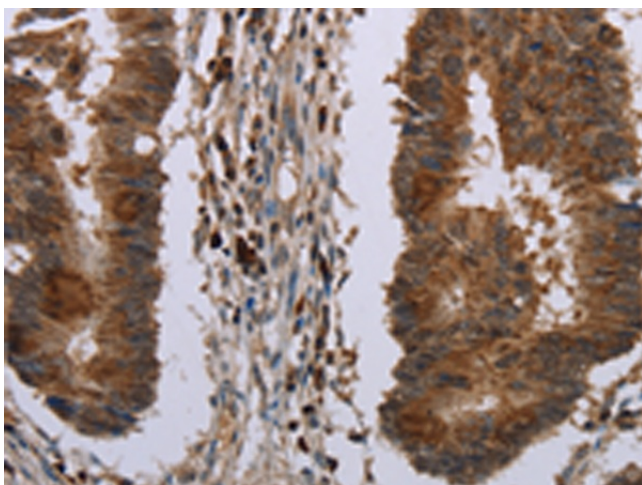
Product data:

Product Type:	Primary Antibodies
Applications:	IHC, WB
Recommended Dilution:	WB: 200-1000 WB positive control: Human placenta and breast infiltrative duct tissue IHC: 25-100 Positive control: Human colon cancer Predicted cell location: Cytoplasm
Reactivity:	Human
Host:	Rabbit
Isotype:	IgG
Clonality:	Polyclonal
Immunogen:	Synthetic peptide of human MIG7
Formulation:	pH7.4 PBS, 0.05% NaN ₃ , 40% Glycerol
Concentration:	lot specific
Purification:	Antigen affinity purification
Conjugation:	Unconjugated
Storage:	Store at -20°C.
Stability:	1 year
Predicted Protein Size:	23 kDa
Database Link:	Q1AHR6
Background:	MIG-7 protein inhibited protein phosphatase 2A to sustain Akt/GSK-3 β phosphorylation and cancer-cell migration/invasion. Cancer cells overexpressing MIG-7 exhibited increased expression of ZEB-1 and Twist in parallel with epithelial-mesenchymal transition, metastasis and cancer lethality. MIG-7 protein level positively correlated with advanced stages of human lung cancers.

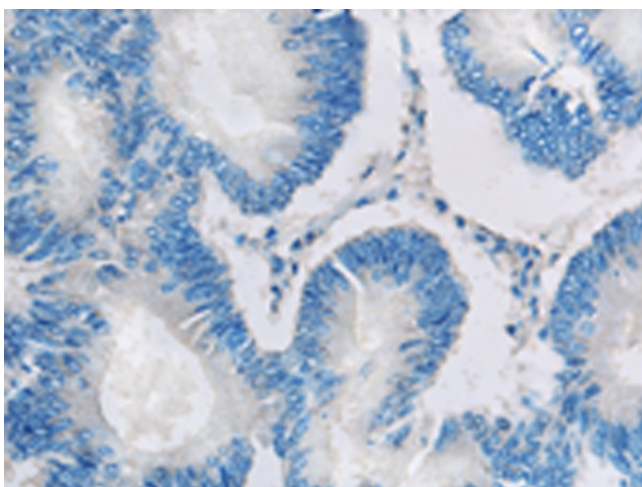
[View online »](#)

Product images:


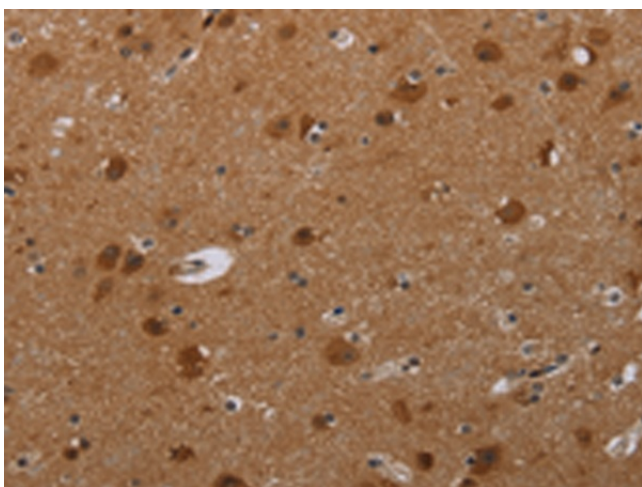
Gel: 12%SDS-PAGE
 Lysate: 40 µg
 Lane 1-2: Human placenta tissue
 Human breast infiltrative duct tissue
 Primary antibody: TA371426 (MIG7 Antibody) at dilution 1/200
 Secondary antibody: Goat anti rabbit IgG at 1/8000 dilution
 Exposure time: 15 seconds



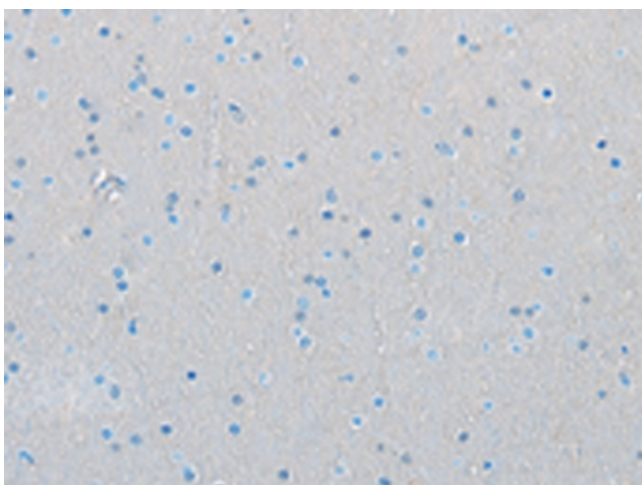
Immunohistochemistry of paraffin-embedded Human colon cancer tissue using TA371426 (MIG7 Antibody) at dilution 1/20 (Original magnification: ×200)



Immunohistochemistry of paraffin-embedded Human colon cancer tissue using TA371426 (MIG7 Antibody) at dilution 1/20, treated with synthetic peptide. (Original magnification: ×200)



Immunohistochemistry of paraffin-embedded Human brain tissue using TA371426 (MIG7 Antibody) at dilution 1/20 (Original magnification: ×200)



Immunohistochemistry of paraffin-embedded Human brain tissue using TA371426 (MIG7 Antibody) at dilution 1/20, treated with synthetic peptide. (Original magnification: ×200)