

## Product datasheet for **TA371417S**

### MARK1 Rabbit Polyclonal Antibody

#### Product data:

Product Type:	Primary Antibodies
Applications:	IHC
Recommended Dilution:	IHC: 50-200 Positive control: Human brain Predicted cell location: Cytoplasm and Nucleus
Reactivity:	Human
Host:	Rabbit
Isotype:	IgG
Clonality:	Polyclonal
Immunogen:	Synthetic peptide of human MARK1
Formulation:	pH7.4 PBS, 0.05% NaN <sub>3</sub> , 40% Glycerol
Concentration:	lot specific
Purification:	Antigen affinity purification
Conjugation:	Unconjugated
Storage:	Store at -20°C.
Stability:	1 year
Gene Name:	microtubule affinity regulating kinase 1
Database Link:	<a href="#">Entrez Gene 4139 Human</a> <a href="#">Q9POL2</a>



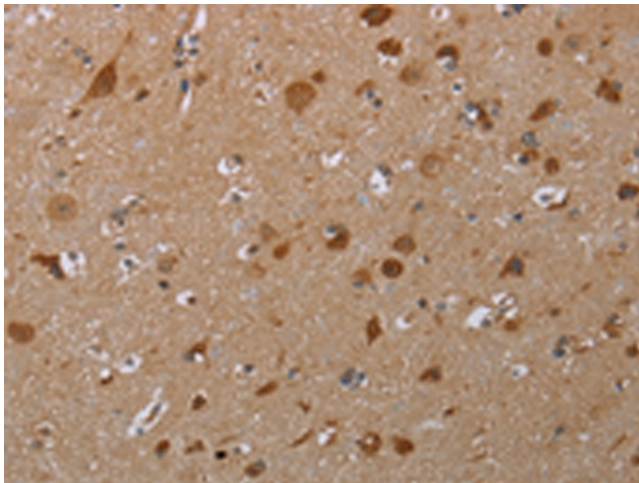
[View online »](#)

**Background:**

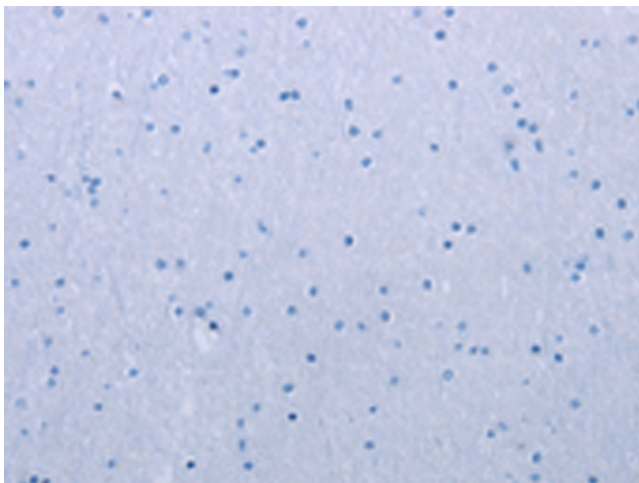
The microtubule matrix within a cell plays a central role in intracellular transport, cell shape during differentiation and chromosome partitioning during mitosis. During these processes, microtubules transition rapidly between stable and dynamic states. MAP/microtubule affinity-regulating kinase 1 (MARK1) is a 795 amino acid protein belonging to the CAMK Ser/Thr protein kinase family. MARK1 is thought to play a role in the stability of the microtubule matrix of the cytoskeleton. MARK1 is activated by phosphorylation of Thr215 by LKB1 in complex with STRAD and MO25. Localized to the cytoskeleton, MARK1 contains one kinase-associated (KA1) domain, one protein kinase domain and one UBA domain. Expressed as three isoforms produced by alternative splicing, MARK1 is found with highest levels in brain, skeletal muscle and heart.

**Synonyms:**

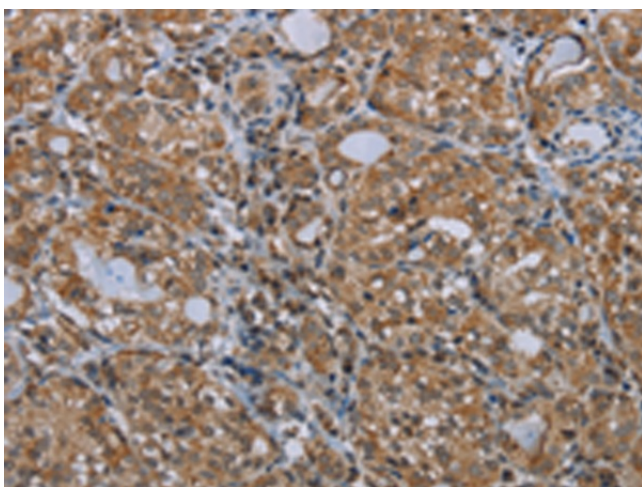
KIAA1477; MARK; MGC126512; MGC126513

**Product images:**

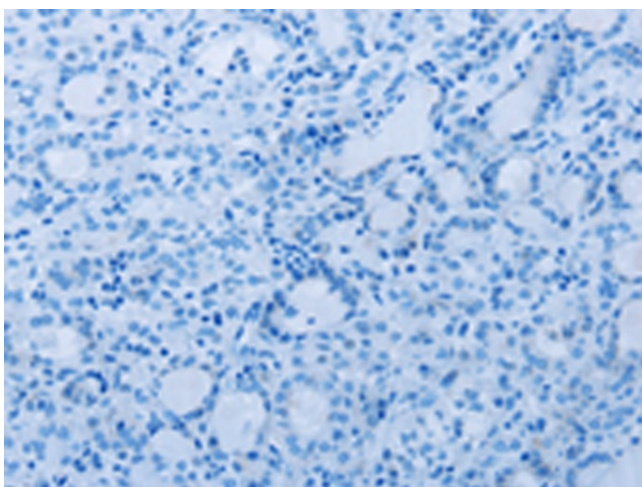
Immunohistochemistry of paraffin-embedded Human brain tissue using [TA371417] (MARK1 Antibody) at dilution 1/30 (Original magnification: ×200)



Immunohistochemistry of paraffin-embedded Human brain tissue using [TA371417] (MARK1 Antibody) at dilution 1/30, treated with synthetic peptide. (Original magnification: ×200)



Immunohistochemistry of paraffin-embedded Human thyroid cancer tissue using [TA371417] (MARK1 Antibody) at dilution 1/30 (Original magnification:  $\times 200$ )



Immunohistochemistry of paraffin-embedded Human thyroid cancer tissue using [TA371417] (MARK1 Antibody) at dilution 1/30, treated with synthetic peptide. (Original magnification:  $\times 200$ )