

Product datasheet for **TA371406**

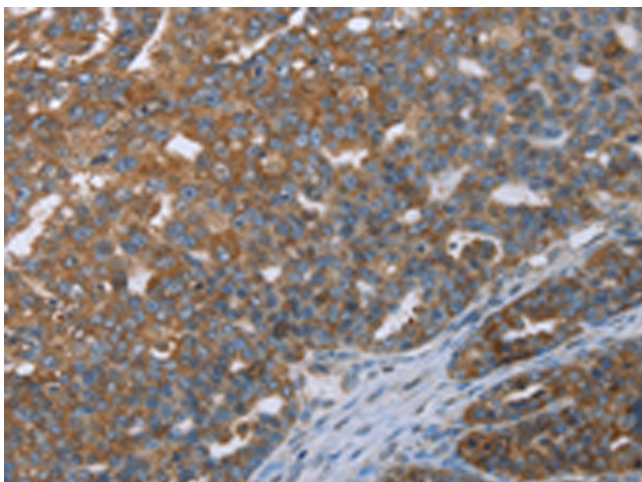
LASS4 (CERS4) Rabbit Polyclonal Antibody

Product data:

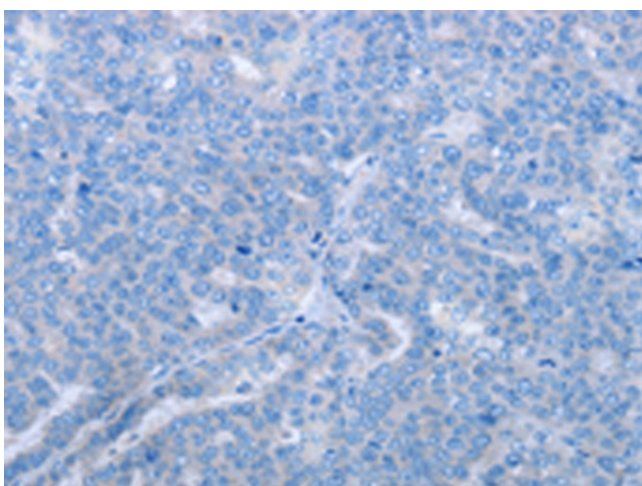
Product Type:	Primary Antibodies
Applications:	IHC
Recommended Dilution:	IHC: 50-200 Positive control: Human ovarian cancer Predicted cell location: Cytoplasm
Reactivity:	Human
Host:	Rabbit
Isotype:	IgG
Clonality:	Polyclonal
Immunogen:	Synthetic peptide of human CERS4
Formulation:	pH7.4 PBS, 0.05% NaN ₃ , 40% Glycerol
Concentration:	lot specific
Purification:	Antigen affinity purification
Conjugation:	Unconjugated
Storage:	Store at -20°C.
Stability:	1 year
Gene Name:	ceramide synthase 4
Database Link:	Entrez Gene 79603 Human Q9HA82
Background:	The LASS (longevity assurance homolog) family members are highly conserved from yeasts to mammals. Six members of this family of proteins have been characterized (LASS1, LASS2, LASS3, LASS4, LASS5 and LASS6) and they are all involved in sphingolipid synthesis. LASS4 is a 394 amino acid endoplasmic reticulum, multi-pass membrane protein. LASS4 increases the levels of long ceramides such as C22:0- and C24:0-ceramides. In cells deficient for CLN9, as observed in neuronal ceroid lipofuscinosis (NCL) or Batten disease, LASS4 can increase ceramide levels and partially correct growth and apoptosis.
Synonyms:	LASS4; Trh1



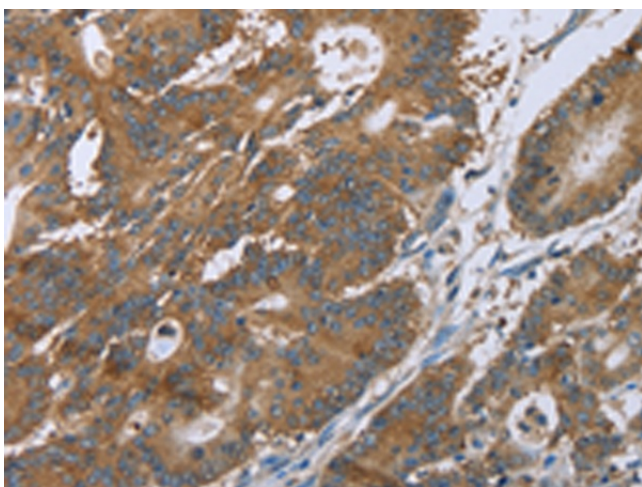
[View online »](#)

Product images:

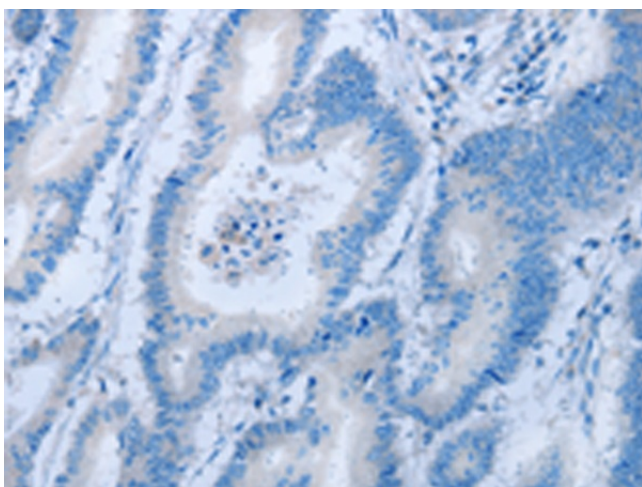
Immunohistochemistry of paraffin-embedded Human ovarian cancer tissue using TA371406 (CERS4 Antibody) at dilution 1/35 (Original magnification: $\times 200$)



Immunohistochemistry of paraffin-embedded Human ovarian cancer tissue using TA371406 (CERS4 Antibody) at dilution 1/35, treated with synthetic peptide. (Original magnification: $\times 200$)



Immunohistochemistry of paraffin-embedded Human colon cancer tissue using TA371406 (CERS4 Antibody) at dilution 1/35 (Original magnification: $\times 200$)



Immunohistochemistry of paraffin-embedded Human colon cancer tissue using TA371406 (CERS4 Antibody) at dilution 1/35, treated with synthetic peptide. (Original magnification: $\times 200$)