

## Product datasheet for **TA371403S**

### **KLRF1 Rabbit Polyclonal Antibody**

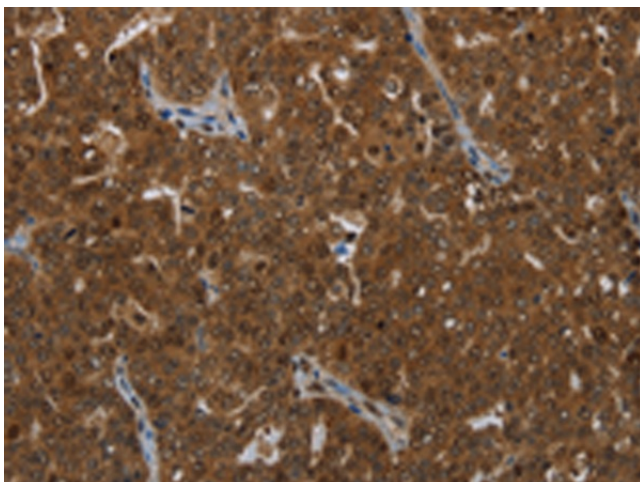
#### **Product data:**

Product Type:	Primary Antibodies
Applications:	IHC
Recommended Dilution:	IHC: 50-200 Positive control: Human ovarian cancer Predicted cell location: Cytoplasm or Nucleus
Reactivity:	Human
Host:	Rabbit
Isotype:	IgG
Clonality:	Polyclonal
Immunogen:	Synthetic peptide of human KLRF1
Formulation:	pH7.4 PBS, 0.05% NaN <sub>3</sub> , 40% Glycerol
Concentration:	lot specific
Purification:	Antigen affinity purification
Conjugation:	Unconjugated
Storage:	Store at -20°C.
Stability:	1 year
Gene Name:	killer cell lectin like receptor F1
Database Link:	<a href="#">Entrez Gene 51348 Human Q9NZS2</a>
Background:	KLRF1, an activating homodimeric C-type lectin-like receptor (CTLR), is expressed on nearly all natural killer (NK) cells and stimulates their cytotoxicity and cytokine release
Synonyms:	CLEC5C; MGC119907; MGC119908; MGC119909; ML; NKp80

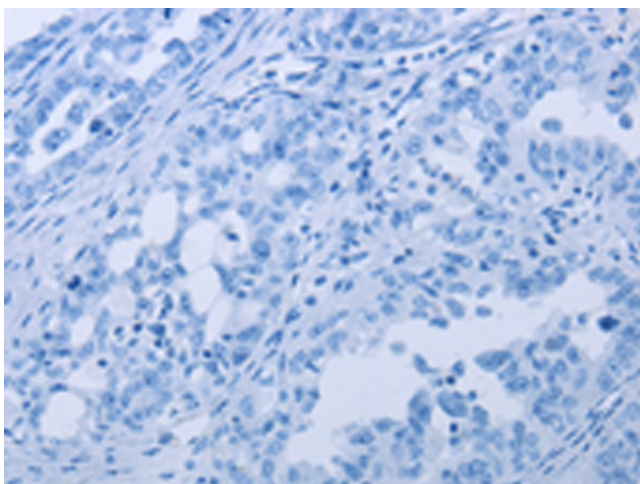


[View online »](#)

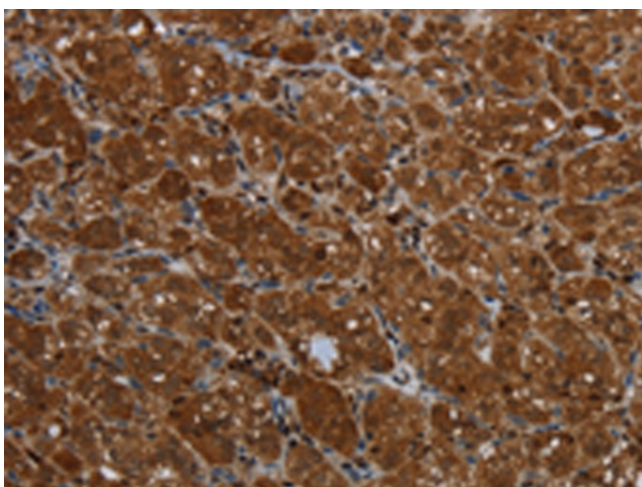
## Product images:



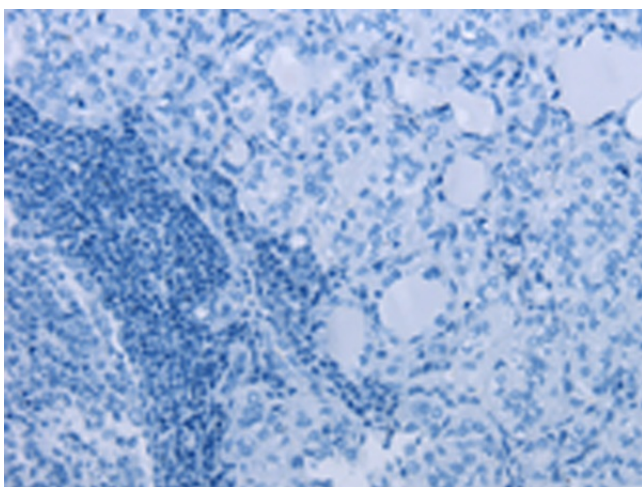
Immunohistochemistry of paraffin-embedded Human ovarian cancer tissue using [TA371403] (KLRF1 Antibody) at dilution 1/25 (Original magnification:  $\times 200$ )



Immunohistochemistry of paraffin-embedded Human ovarian cancer tissue using [TA371403] (KLRF1 Antibody) at dilution 1/25, treated with synthetic peptide. (Original magnification:  $\times 200$ )



Immunohistochemistry of paraffin-embedded Human thyroid cancer tissue using [TA371403] (KLRF1 Antibody) at dilution 1/25 (Original magnification: ×200)



Immunohistochemistry of paraffin-embedded Human thyroid cancer tissue using [TA371403] (KLRF1 Antibody) at dilution 1/25, treated with synthetic peptide. (Original magnification: ×200)