

Product datasheet for **TA371403**

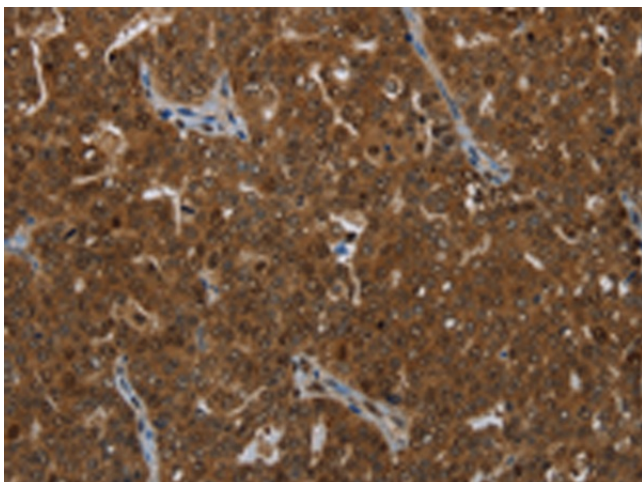
KLRF1 Rabbit Polyclonal Antibody

Product data:

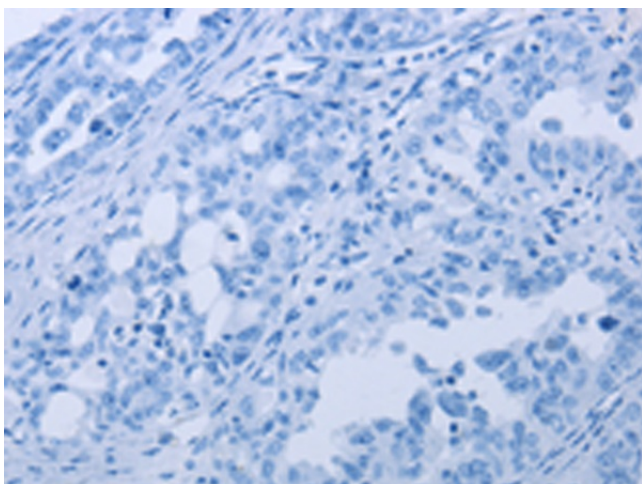
Product Type:	Primary Antibodies
Applications:	IHC
Recommended Dilution:	IHC: 50-200 Positive control: Human ovarian cancer Predicted cell location: Cytoplasm or Nucleus
Reactivity:	Human
Host:	Rabbit
Isotype:	IgG
Clonality:	Polyclonal
Immunogen:	Synthetic peptide of human KLRF1
Formulation:	pH7.4 PBS, 0.05% NaN ₃ , 40% Glycerol
Concentration:	lot specific
Purification:	Antigen affinity purification
Conjugation:	Unconjugated
Storage:	Store at -20°C.
Stability:	1 year
Gene Name:	killer cell lectin like receptor F1
Database Link:	Entrez Gene 51348 Human Q9NZS2
Background:	KLRF1, an activating homodimeric C-type lectin-like receptor (CLR), is expressed on nearly all natural killer (NK) cells and stimulates their cytotoxicity and cytokine release
Synonyms:	CLEC5C; MGC119907; MGC119908; MGC119909; ML; NKp80



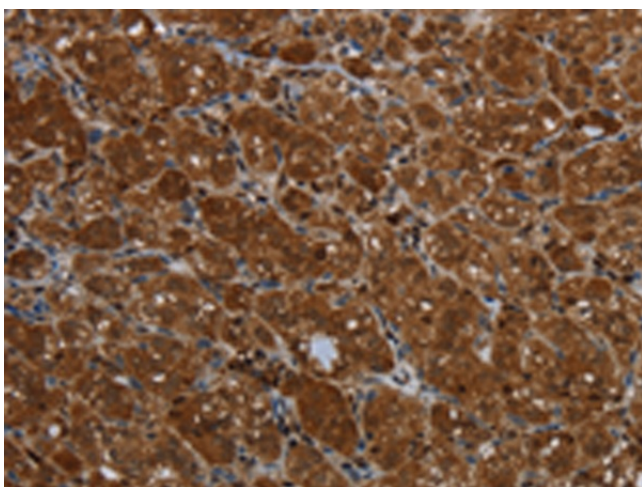
[View online »](#)

Product images:

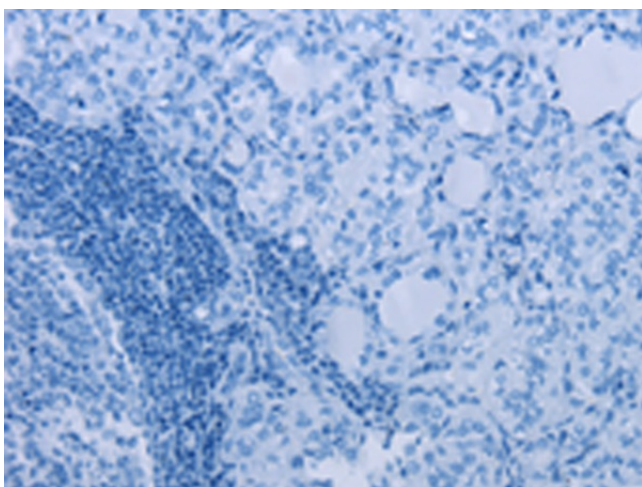
Immunohistochemistry of paraffin-embedded Human ovarian cancer tissue using TA371403 (KLRF1 Antibody) at dilution 1/25 (Original magnification: $\times 200$)



Immunohistochemistry of paraffin-embedded Human ovarian cancer tissue using TA371403 (KLRF1 Antibody) at dilution 1/25, treated with synthetic peptide. (Original magnification: $\times 200$)



Immunohistochemistry of paraffin-embedded Human thyroid cancer tissue using TA371403 (KLRF1 Antibody) at dilution 1/25 (Original magnification: $\times 200$)



Immunohistochemistry of paraffin-embedded Human thyroid cancer tissue using TA371403 (KLRF1 Antibody) at dilution 1/25, treated with synthetic peptide. (Original magnification: $\times 200$)