

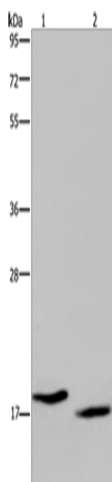
Product datasheet for **TA371402S**

KLLN Rabbit Polyclonal Antibody

Product data:

Product Type:	Primary Antibodies
Applications:	WB
Recommended Dilution:	WB: 500-2000 WB positive control: MCF-7 and Hela cells
Reactivity:	Human
Host:	Rabbit
Isotype:	IgG
Clonality:	Polyclonal
Immunogen:	Synthetic peptide of human KLLN
Formulation:	pH7.4 PBS, 0.05% NaN ₃ , 40% Glycerol
Concentration:	lot specific
Purification:	Antigen affinity purification
Conjugation:	Unconjugated
Storage:	Store at -20°C.
Stability:	1 year
Predicted Protein Size:	20 kDa
Gene Name:	killin, p53-regulated DNA replication inhibitor
Database Link:	Entrez Gene 100144748 Human B2CW77
Background:	The protein encoded by this intronless gene is found in the nucleus, where it can inhibit DNA synthesis and promote S phase arrest coupled to apoptosis. The expression of this DNA binding protein is upregulated by transcription factor p53.
Synonyms:	CWS4; KILLIN

[View online »](#)

Product images:


Gel: 10%SDS-PAGE

Lysate: 40 µg

Lane 1-2: MCF7 cells

Hela cells

Primary antibody: [TA371402] (KLLN Antibody) at dilution 1/350

Secondary antibody: Goat anti rabbit IgG at 1/8000 dilution

Exposure time: 2 minutes