

Product datasheet for **TA371387S**

Importin 9 (IPO9) Rabbit Polyclonal Antibody

Product data:

Product Type:	Primary Antibodies
Applications:	IHC, WB
Recommended Dilution:	WB: 200-1000 WB positive control: Human fetal brain tissue and Hela cells IHC: 50-200 Positive control: Human colon cancer Predicted cell location: Cytoplasm
Reactivity:	Human, Mouse
Host:	Rabbit
Isotype:	IgG
Clonality:	Polyclonal
Immunogen:	Synthetic peptide of human IPO9
Formulation:	pH7.4 PBS, 0.05% NaN ₃ , 40% Glycerol
Concentration:	lot specific
Purification:	Antigen affinity purification
Conjugation:	Unconjugated
Storage:	Store at -20°C.
Stability:	1 year
Predicted Protein Size:	116 kDa
Gene Name:	importin 9
Database Link:	Entrez Gene 55705 Human Q96P70



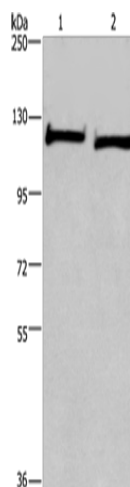
[View online »](#)

Background:

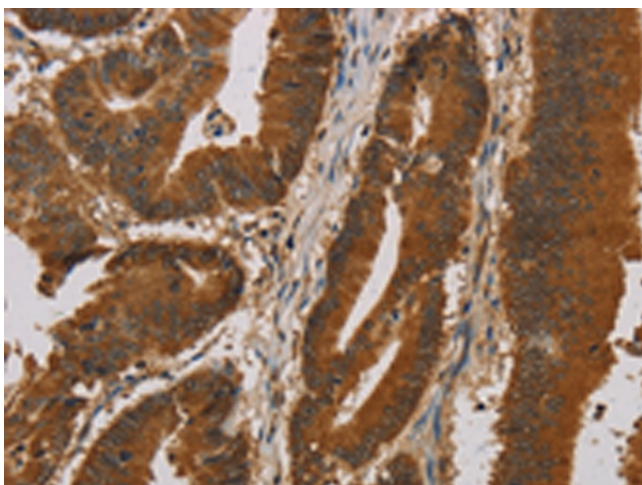
Importin-9, also known as Imp9 or IPO9, is a 1,041 amino acid protein that contains one importin N-terminal domain and belongs to the Importin- β family. Localized to both the nucleus and the cytoplasm, Importin-9 functions as a nuclear transport receptor that mediates the docking of the Importin complex to the nuclear pore complex (NPC). Importin-9 mediates nuclear import of H2B histone, Ribosomal Protein S7 and Ribosomal Protein L18A. The gene encoding Importin-9 is located on human chromosome 1, the largest human chromosome that spans about 260 million base pairs and makes up 8% of the human genome.

Synonyms:

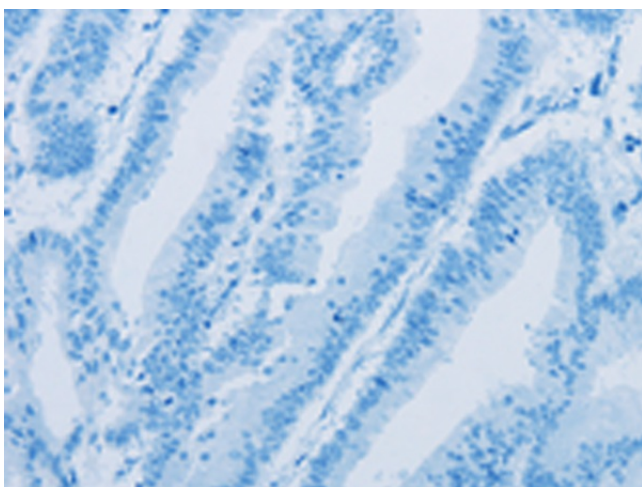
DKFZp761M1547; FLJ10402; IMP9; KIAA1192; RANBP9

Product images:

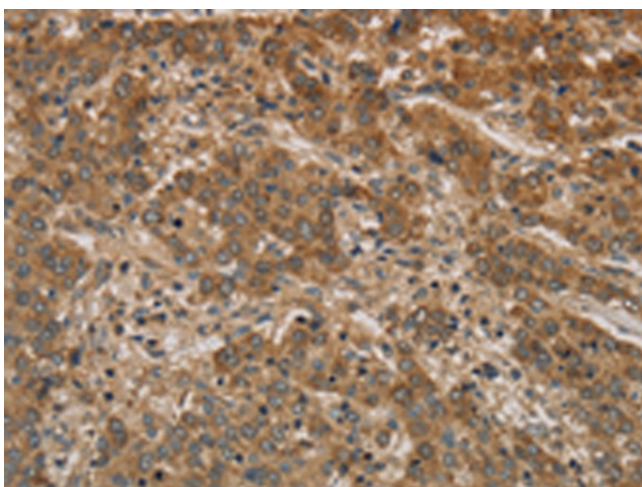
Gel: 6%SDS-PAGE
Lysate: 40 μ g
Lane 1-2: Human fetal brain tissue
HeLa cells
Primary antibody: [TA371387] (IPO9 Antibody) at dilution 1/200
Secondary antibody: Goat anti rabbit IgG at 1/8000 dilution
Exposure time: 1 minute



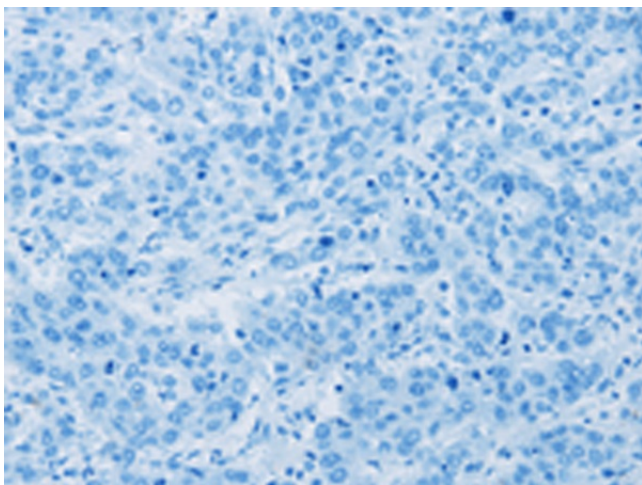
Immunohistochemistry of paraffin-embedded Human colon cancer tissue using [TA371387] (IPO9 Antibody) at dilution 1/20 (Original magnification: \times 200)



Immunohistochemistry of paraffin-embedded Human colon cancer tissue using [TA371387] (IPO9 Antibody) at dilution 1/20, treated with synthetic peptide. (Original magnification: $\times 200$)



Immunohistochemistry of paraffin-embedded Human liver cancer tissue using [TA371387] (IPO9 Antibody) at dilution 1/20 (Original magnification: $\times 200$)



Immunohistochemistry of paraffin-embedded Human liver cancer tissue using [TA371387] (IPO9 Antibody) at dilution 1/20, treated with synthetic peptide. (Original magnification: $\times 200$)