

Product datasheet for **TA371386S**

Synapsin II (SYN2) Rabbit Polyclonal Antibody

Product data:

Product Type:	Primary Antibodies
Applications:	IHC, WB
Recommended Dilution:	WB: 200-1000 WB positive control: Mouse brain tissue IHC: 25-100 Positive control: Human brain Predicted cell location: Cytoplasm
Reactivity:	Human, Mouse, Rat
Host:	Rabbit
Isotype:	IgG
Clonality:	Polyclonal
Immunogen:	Synthetic peptide of human SYN2
Formulation:	pH7.4 PBS, 0.05% NaN ₃ , 40% Glycerol
Concentration:	lot specific
Purification:	Antigen affinity purification
Conjugation:	Unconjugated
Storage:	Store at -20°C.
Stability:	1 year
Predicted Protein Size:	63 kDa
Gene Name:	synapsin II
Database Link:	Entrez Gene 6854 Human Q92777



[View online »](#)

Background:

This gene is a member of the synapsin gene family. Synapsins encode neuronal phosphoproteins which associate with the cytoplasmic surface of synaptic vesicles. Family members are characterized by common protein domains, and they are implicated in synaptogenesis and the modulation of neurotransmitter release, suggesting a potential role in several neuropsychiatric diseases. This member of the synapsin family encodes a neuron-specific phosphoprotein that selectively binds to small synaptic vesicles in the presynaptic nerve terminal. The TIMP4 gene is located within an intron of this gene and is transcribed in the opposite direction. Mutations in this gene may be associated with abnormal presynaptic function and schizophrenia. Alternative splicing of this gene results in two transcripts.

Synonyms:

SYNII; SYNIIa; SYNIIb

Product images:

Gel: 6%SDS-PAGE

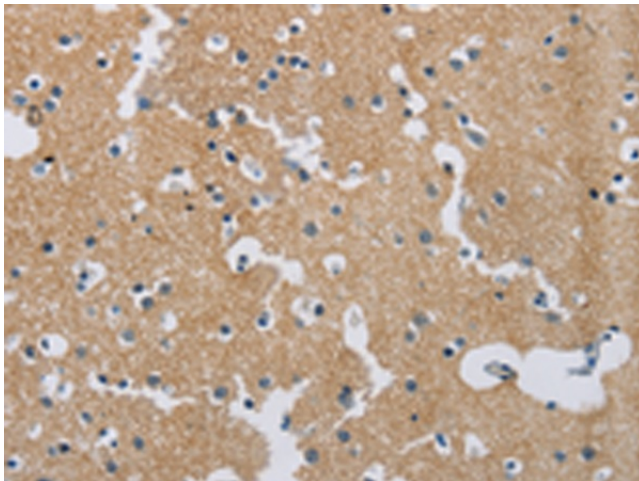
Lysate: 40 µg

Lane: Mouse brain tissue

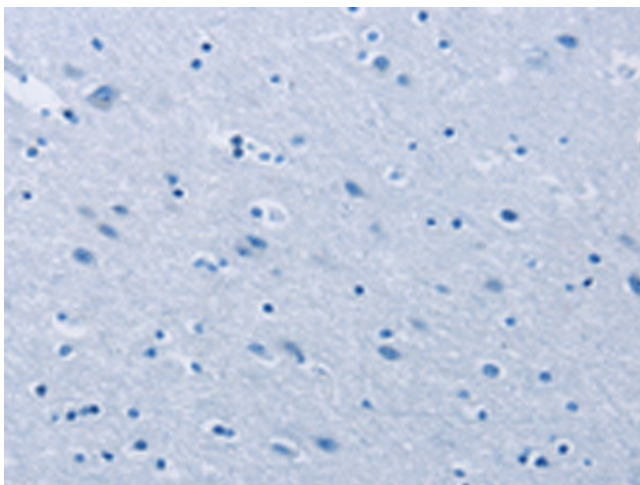
Primary antibody: [TA371386] (SYN2 Antibody) at dilution 1/250

Secondary antibody: Goat anti rabbit IgG at 1/8000 dilution

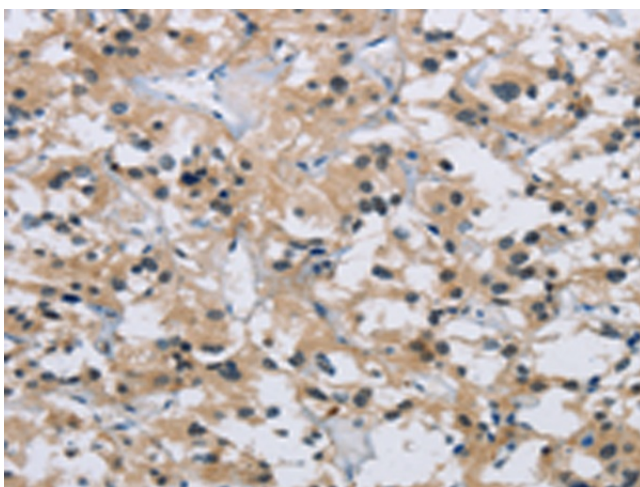
Exposure time: 3 minutes



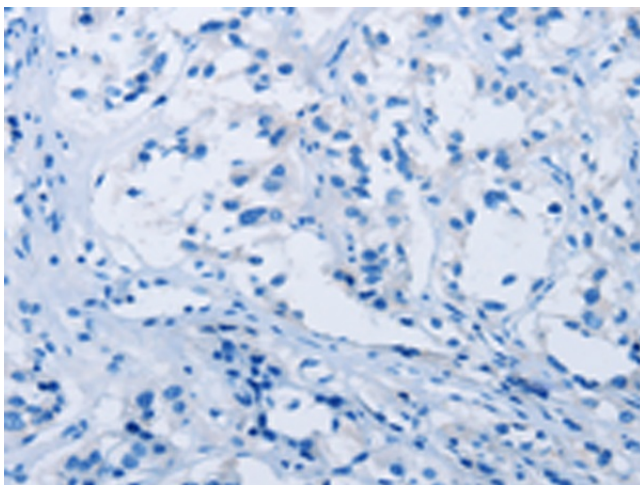
Immunohistochemistry of paraffin-embedded Human brain tissue using [TA371386] (SYN2 Antibody) at dilution 1/40 (Original magnification: ×200)



Immunohistochemistry of paraffin-embedded Human brain tissue using [TA371386] (SYN2 Antibody) at dilution 1/40, treated with synthetic peptide. (Original magnification: $\times 200$)



Immunohistochemistry of paraffin-embedded Human thyroid cancer tissue using [TA371386] (SYN2 Antibody) at dilution 1/40 (Original magnification: $\times 200$)



Immunohistochemistry of paraffin-embedded Human thyroid cancer tissue using [TA371386] (SYN2 Antibody) at dilution 1/40, treated with synthetic peptide. (Original magnification: $\times 200$)