

## Product datasheet for **TA371383S**

### IFNGR2 Rabbit Polyclonal Antibody

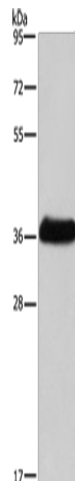
#### Product data:

Product Type:	Primary Antibodies
Applications:	WB
Recommended Dilution:	WB: 2000-5000 WB positive control: Mouse skeletal muscle tissue
Reactivity:	Human, Mouse
Host:	Rabbit
Isotype:	IgG
Clonality:	Polyclonal
Immunogen:	Synthetic peptide of human IFNGR2
Formulation:	pH7.4 PBS, 0.05% NaN <sub>3</sub> , 40% Glycerol
Concentration:	lot specific
Purification:	Antigen affinity purification
Conjugation:	Unconjugated
Storage:	Store at -20°C.
Stability:	1 year
Predicted Protein Size:	38 kDa
Gene Name:	interferon gamma receptor 2 (interferon gamma transducer 1)
Database Link:	<a href="#">Entrez Gene 3460 Human P38484</a>
Background:	This gene (IFNGR2) encodes the non-ligand-binding beta chain of the gamma interferon receptor. Human interferon-gamma receptor is a heterodimer of IFNGR1 and IFNGR2. Defects in IFNGR2 are a cause of mendelian susceptibility to mycobacterial disease (MSMD), also known as familial disseminated atypical mycobacterial infection. MSMD is a genetically heterogeneous disease with autosomal recessive, autosomal dominant or X-linked inheritance.
Synonyms:	AF-1; IFGR2; IFNGT1



[View online »](#)

## Product images:



Gel: 8%SDS-PAGE

Lysate: 40  $\mu$ g

Lane: Mouse skeletal muscle tissue

Primary antibody: [TA371383] (IFNGR2 Antibody)  
at dilution 1/400

Secondary antibody: Goat anti rabbit IgG at  
1/8000 dilution

Exposure time: 40 seconds