

Product datasheet for **TA371379**

HSD17B1 Rabbit Polyclonal Antibody

Product data:

Product Type:	Primary Antibodies
Applications:	IHC, WB
Recommended Dilution:	WB: 500-2000 WB positive control: Human placenta tissue IHC: 50-200 Positive control: Human brain Predicted cell location: Cytoplasm
Reactivity:	Human
Host:	Rabbit
Isotype:	IgG
Clonality:	Polyclonal
Immunogen:	Synthetic peptide of human HSD17B1
Formulation:	pH7.4 PBS, 0.05% NaN ₃ , 40% Glycerol
Concentration:	lot specific
Purification:	Antigen affinity purification
Conjugation:	Unconjugated
Storage:	Store at -20°C.
Stability:	1 year
Predicted Protein Size:	35 kDa
Gene Name:	hydroxysteroid (17-beta) dehydrogenase 1
Database Link:	Entrez Gene 3292 Human P14061



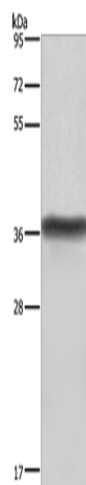
[View online »](#)

Background:

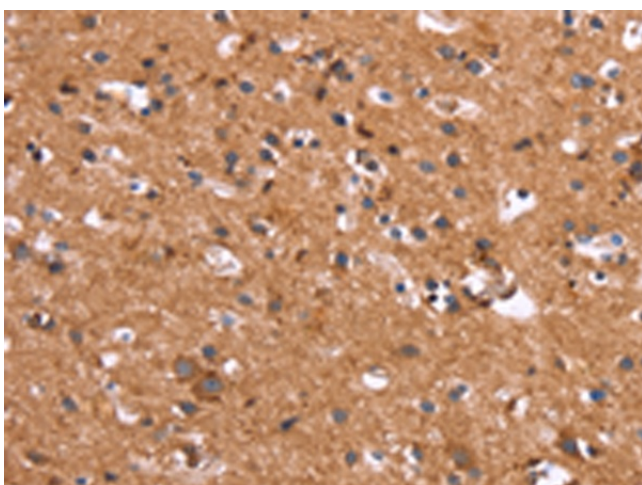
Hydroxysteroid (17-beta) dehydrogenase 1 catalyzes the final step in the formation of estradiol and testosterone from estrone and androstenedione, respectively. Ovarian granulosa cells and breast tissue both express HSD17B1. Other tissues that express HSD17B1 include testis, placenta, uterus, prostate and adipose tissue. HSD17B1 functions as a homodimer and prefers NADP(H) over NAD(H) for oxidation and reduction. The gene encoding human HSD17B1 maps to chromosome 17q12-q21. The importance of HSD17B1 to estradiol production suggests the specific inhibition of HSD17B1 may aid in breast cancer therapy.

Synonyms:

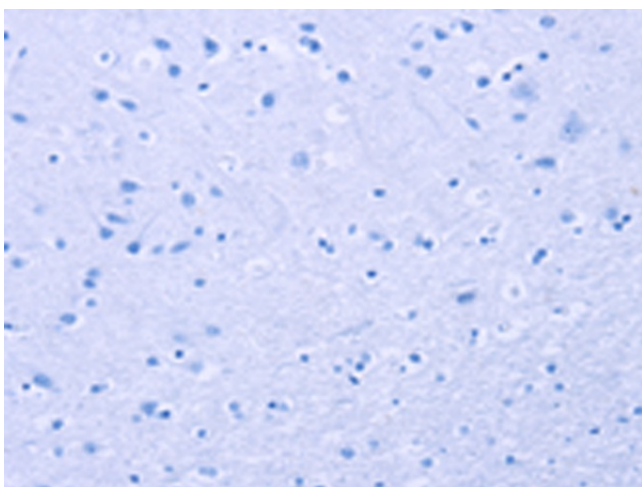
20-alpha-HSD; E2DH; E17KSR; EDH17B1; EDH17B2; EDHB17; HSD17; MGC138140; SDR28C1

Product images:

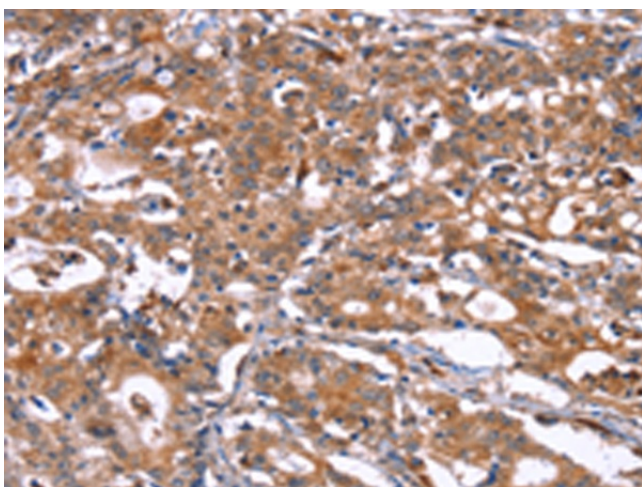
Gel: 8%SDS-PAGE
Lysate: 40 µg
Lane: Human placenta tissue
Primary antibody: TA371379 (HSD17B1 Antibody) at dilution 1/600
Secondary antibody: Goat anti rabbit IgG at 1/8000 dilution
Exposure time: 1 second



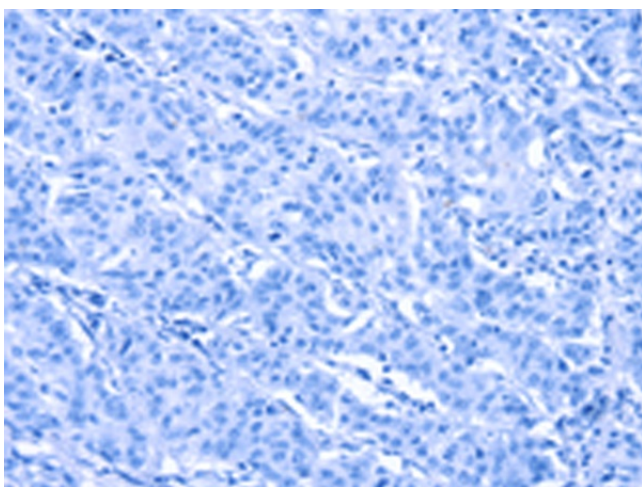
Immunohistochemistry of paraffin-embedded Human brain tissue using TA371379 (HSD17B1 Antibody) at dilution 1/40 (Original magnification: ×200)



Immunohistochemistry of paraffin-embedded Human brain tissue using TA371379 (HSD17B1 Antibody) at dilution 1/40, treated with synthetic peptide. (Original magnification: $\times 200$)



Immunohistochemistry of paraffin-embedded Human gastric cancer tissue using TA371379 (HSD17B1 Antibody) at dilution 1/40 (Original magnification: $\times 200$)



Immunohistochemistry of paraffin-embedded Human gastric cancer tissue using TA371379 (HSD17B1 Antibody) at dilution 1/40, treated with synthetic peptide. (Original magnification: $\times 200$)