

## Product datasheet for **TA371376**

### HRH2 Rabbit Polyclonal Antibody

#### Product data:

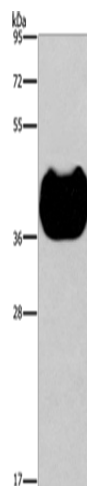
|                         |                                                                |
|-------------------------|----------------------------------------------------------------|
| Product Type:           | Primary Antibodies                                             |
| Applications:           | WB                                                             |
| Recommended Dilution:   | WB: 500-2000<br>WB positive control: Human fetal muscle tissue |
| Reactivity:             | Human                                                          |
| Host:                   | Rabbit                                                         |
| Isotype:                | IgG                                                            |
| Clonality:              | Polyclonal                                                     |
| Immunogen:              | Synthetic peptide of human HRH2                                |
| Formulation:            | pH7.4 PBS, 0.05% NaN <sub>3</sub> , 40% Glycerol               |
| Concentration:          | lot specific                                                   |
| Purification:           | Antigen affinity purification                                  |
| Conjugation:            | Unconjugated                                                   |
| Storage:                | Store at -20°C.                                                |
| Stability:              | 1 year                                                         |
| Predicted Protein Size: | 40 kDa                                                         |
| Gene Name:              | histamine receptor H2                                          |
| Database Link:          | <a href="#">Entrez Gene 3274 Human P25021</a>                  |

**Background:** Histamine is a ubiquitous messenger molecule released from mast cells, enterochromaffin-like cells, and neurons. Its various actions are mediated by histamine receptors H1, H2, H3 and H4. Histamine receptor H2 belongs to the family 1 of G protein-coupled receptors. It is an integral membrane protein and stimulates gastric acid secretion. It also regulates gastrointestinal motility and intestinal secretion and is thought to be involved in regulating cell growth and differentiation. Alternatively spliced transcript variants encoding different isoforms have been found for this gene.

**Synonyms:** DBP1; DDX15; DHX15; H2R; OTTHUMP00000161242



[View online »](#)

**Product images:**

Gel: 8%SDS-PAGE

Lysate: 40  $\mu$ g

Lane: Human fetal muscle tissue

Primary antibody: TA371376 (HRH2 Antibody) at dilution 1/300

Secondary antibody: Goat anti rabbit IgG at 1/8000 dilution

Exposure time: 30 seconds