

Product datasheet for **TA371370S**

HMGCS1 Rabbit Polyclonal Antibody

Product data:

Product Type:	Primary Antibodies
Applications:	IHC
Recommended Dilution:	IHC: 50-200 Positive control: Human gastric cancer Predicted cell location: Cytoplasm
Reactivity:	Human
Host:	Rabbit
Isotype:	IgG
Clonality:	Polyclonal
Immunogen:	Synthetic peptide of human HMGCS1
Formulation:	pH7.4 PBS, 0.05% NaN ₃ , 40% Glycerol
Concentration:	lot specific
Purification:	Antigen affinity purification
Conjugation:	Unconjugated
Storage:	Store at -20°C.
Stability:	1 year
Gene Name:	3-hydroxy-3-methylglutaryl-CoA synthase 1
Database Link:	Entrez Gene 3157 Human Q01581

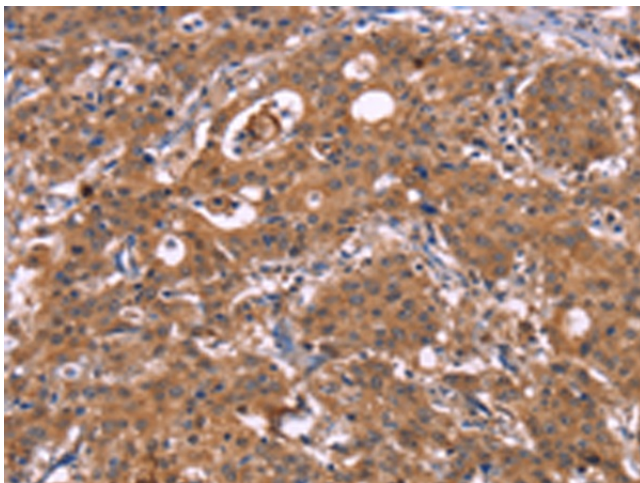
Background: HMG-CoA Synthase exists as both a mitochondrial (mHMGCS) and cytoplasmic (cHMGCS) enzyme that condenses acetyl-CoA with acetoacetyl-CoA to form HMG-CoA. The HMG-CoA produced by cHMGCS is transformed into mevalonate by HMG-CoA reductase, which starts isoprenoid biosynthesis. End products of the isoprenoid pathway include cholesterol, ubiquinone, dolichol, isopentenyl adenosine and farnesyl groups. mHMGCS, together with HMG-CoA Lyase, is responsible for ketone body biosynthesis. mHMGCS is expressed in liver and kidney. Fasting, cAMP and fatty acids increase the level of transcription of mHMGCS, while feeding and insulin repress it. A regulatory element within the mHMGCS promoter confers transcriptional regulation by PPAR, RXR, COUP-TF and HNF-4.



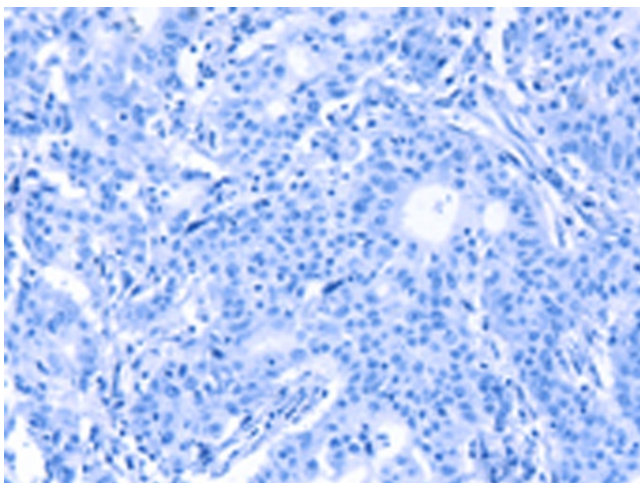
[View online »](#)

Synonyms: HMGS; MGC90332

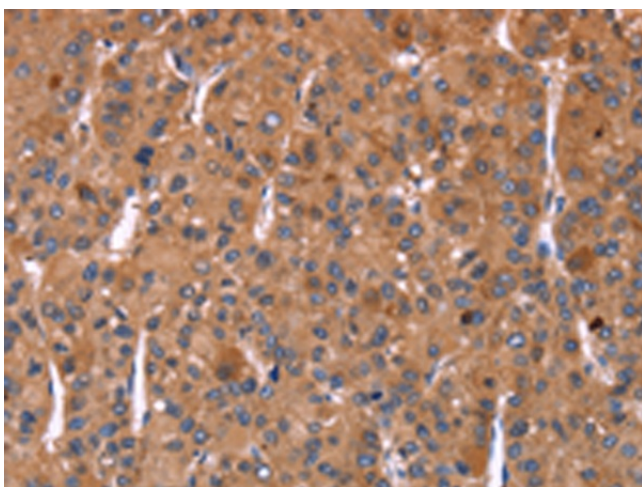
Product images:



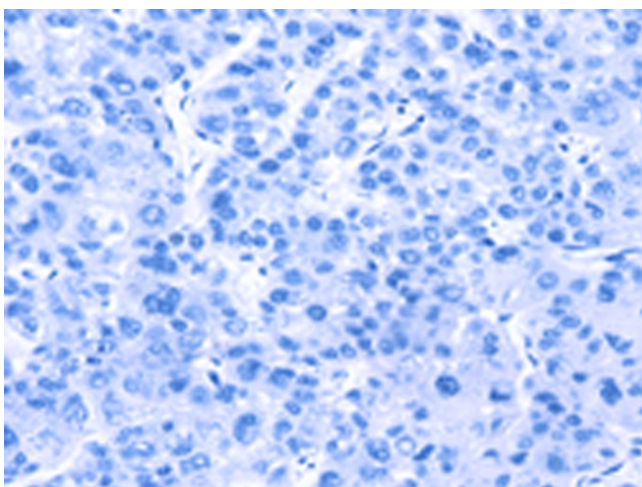
Immunohistochemistry of paraffin-embedded Human gastric cancer tissue using [TA371370] (HMGS1 Antibody) at dilution 1/40 (Original magnification: $\times 200$)



Immunohistochemistry of paraffin-embedded Human gastric cancer tissue using [TA371370] (HMGS1 Antibody) at dilution 1/40, treated with synthetic peptide. (Original magnification: $\times 200$)



Immunohistochemistry of paraffin-embedded Human liver cancer tissue using [TA371370] (HMGC51 Antibody) at dilution 1/40 (Original magnification: $\times 200$)



Immunohistochemistry of paraffin-embedded Human liver cancer tissue using [TA371370] (HMGC51 Antibody) at dilution 1/40, treated with synthetic peptide. (Original magnification: $\times 200$)