

Product datasheet for **TA371365S**

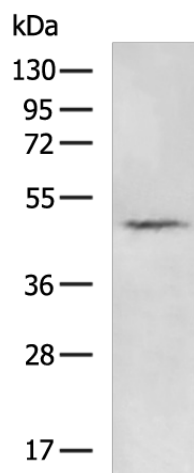
GPR39 Rabbit Polyclonal Antibody

Product data:

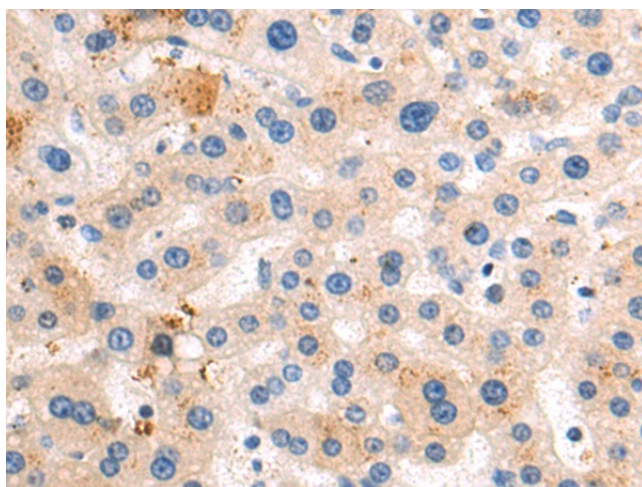
Product Type:	Primary Antibodies
Applications:	IHC, WB
Recommended Dilution:	WB: 500-2000 WB positive control: Mouse kidney tissue lysate IHC: 50-200 Positive control: Human liver cancer Predicted cell location: Cytoplasm
Reactivity:	Human, Mouse
Host:	Rabbit
Isotype:	IgG
Clonality:	Polyclonal
Immunogen:	Synthetic peptide of human GPR39
Formulation:	pH7.4 PBS, 0.05% NaN ₃ , 40% Glycerol
Concentration:	lot specific
Purification:	Antigen affinity purification
Conjugation:	Unconjugated
Storage:	Store at -20°C.
Stability:	1 year
Predicted Protein Size:	51 kDa
Gene Name:	G protein-coupled receptor 39
Database Link:	Entrez Gene 2863 Human O43194
Background:	This gene is a member of the ghrelin receptor family and encodes a rhodopsin-type G-protein-coupled receptor (GPCR). The encoded protein is involved in zinc-dependent signaling in epithelial tissue in intestines, prostate and salivary glands. The protein may also be involved in the pathophysiology of depression.
Synonyms:	4933415E13Rik



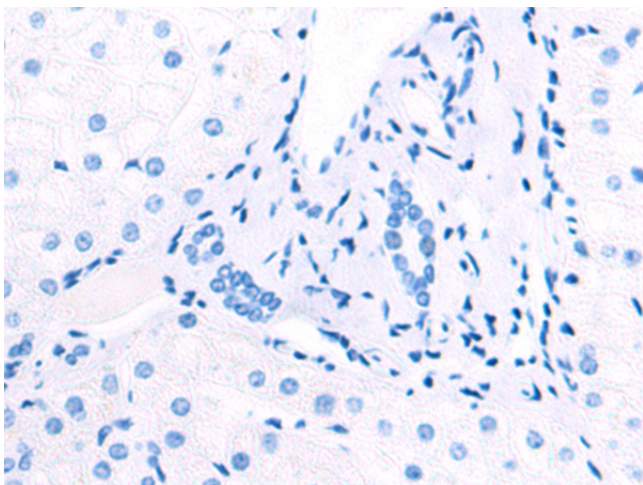
[View online »](#)

Product images:

Gel: 8%SDS-PAGE
Lysate: 40 µg
Lane: Mouse kidney tissue lysate
Primary antibody: [TA371365] (GPR39 Antibody) at dilution 1/1000
Secondary antibody: Goat anti rabbit IgG at 1/5000 dilution
Exposure time: 1 minute



Immunohistochemistry of paraffin-embedded Human liver cancer tissue using [TA371365] (GPR39 Antibody) at dilution 1/75 (Original magnification: ×200)



Immunohistochemistry of paraffin-embedded Human liver cancer tissue using [TA371365] (GPR39 Antibody) at dilution 1/75, treated with synthetic peptide. (Original magnification: $\times 200$)