

## Product datasheet for **TA371352**

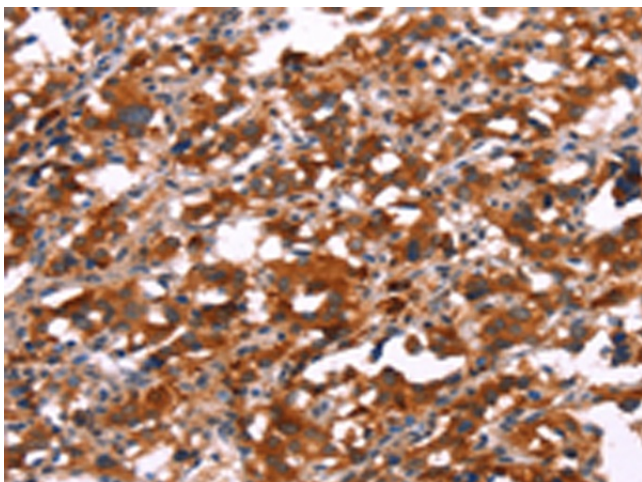
### SLC6A1 Rabbit Polyclonal Antibody

#### Product data:

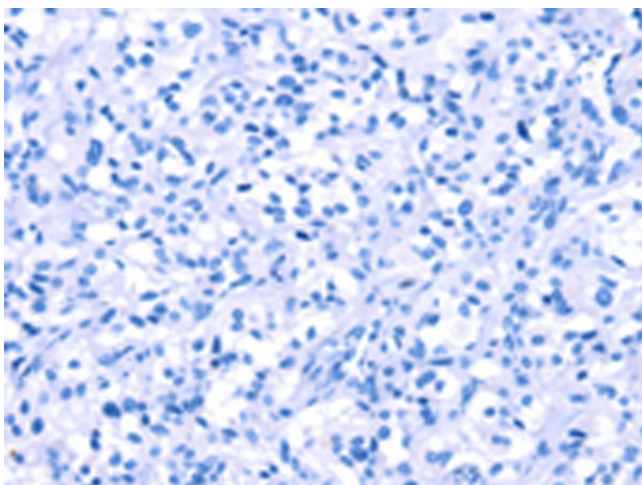
Product Type:	Primary Antibodies
Applications:	IHC
Recommended Dilution:	IHC: 25-100 Positive control: Human thyroid cancer Predicted cell location: Cytoplasm
Reactivity:	Human, Mouse, Rat
Host:	Rabbit
Isotype:	IgG
Clonality:	Polyclonal
Immunogen:	Synthetic peptide of human SLC6A1
Formulation:	pH7.4 PBS, 0.05% NaN <sub>3</sub> , 40% Glycerol
Concentration:	lot specific
Purification:	Antigen affinity purification
Conjugation:	Unconjugated
Storage:	Store at -20°C.
Stability:	1 year
Gene Name:	solute carrier family 6 member 1
Database Link:	<a href="#">Entrez Gene 6529 Human P30531</a>
Background:	The SLC6A1 gene encodes a gamma-aminobutyric acid (GABA) transporter, which removes GABA from the synaptic cleft. The cDNA contained an open reading frame encoding a hydrophobic protein of 599 amino acids with a calculated molecular weight of 67,022 daltons. Hydropathy analysis showed 12 potential transmembrane segments. The human protein is highly homologous to that from rat brain
Synonyms:	GABATHG; GABATR; GABT1; GAT-1; GAT1



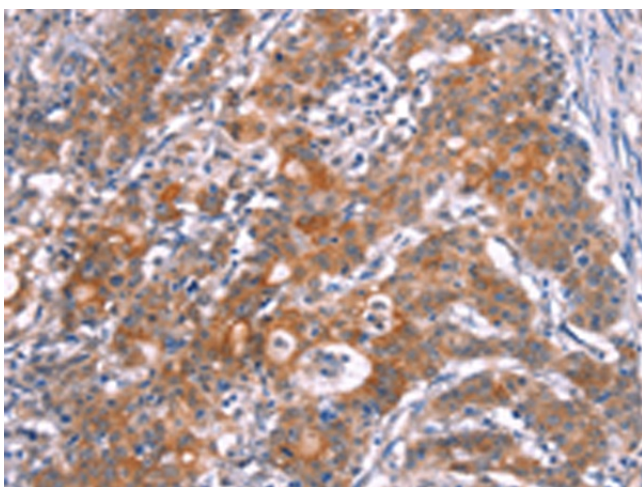
[View online »](#)

**Product images:**

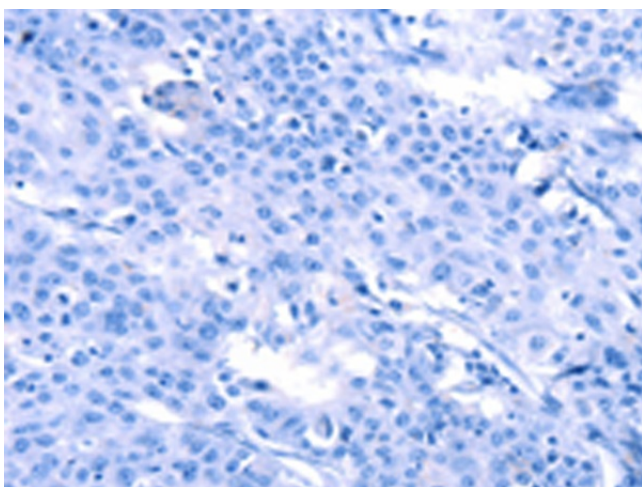
Immunohistochemistry of paraffin-embedded Human thyroid cancer tissue using TA371352 (SLC6A1 Antibody) at dilution 1/25 (Original magnification:  $\times 200$ )



Immunohistochemistry of paraffin-embedded Human thyroid cancer tissue using TA371352 (SLC6A1 Antibody) at dilution 1/25, treated with synthetic peptide. (Original magnification:  $\times 200$ )



Immunohistochemistry of paraffin-embedded Human gastric cancer tissue using TA371352 (SLC6A1 Antibody) at dilution 1/25 (Original magnification:  $\times 200$ )



Immunohistochemistry of paraffin-embedded Human gastric cancer tissue using TA371352 (SLC6A1 Antibody) at dilution 1/25, treated with synthetic peptide. (Original magnification:  $\times 200$ )