

Product datasheet for **TA371350**

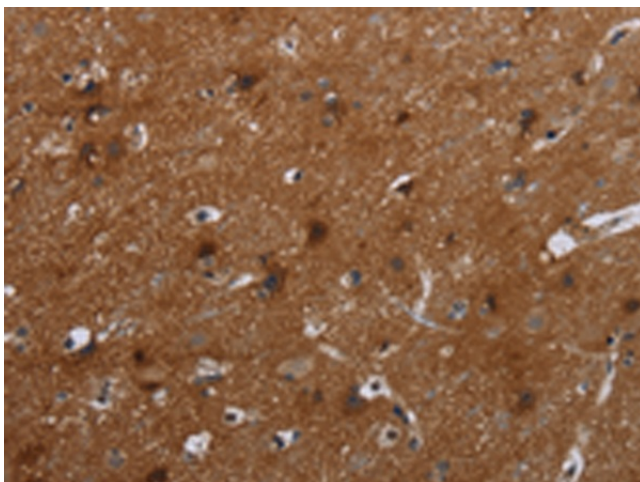
FMN2 Rabbit Polyclonal Antibody

Product data:

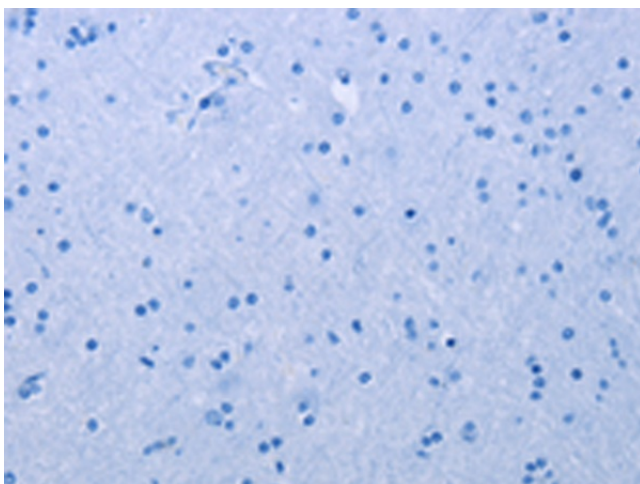
Product Type:	Primary Antibodies
Applications:	IHC
Recommended Dilution:	IHC: 25-100 Positive control: Human brain Predicted cell location: Cytoplasm
Reactivity:	Human
Host:	Rabbit
Isotype:	IgG
Clonality:	Polyclonal
Immunogen:	Synthetic peptide of human FMN2
Formulation:	pH7.4 PBS, 0.05% NaN ₃ , 40% Glycerol
Concentration:	lot specific
Purification:	Antigen affinity purification
Conjugation:	Unconjugated
Storage:	Store at -20°C.
Stability:	1 year
Gene Name:	formin 2
Database Link:	Entrez Gene 56776 Human Q9NZ56
Background:	Formin homology (FH) domain proteins (see FMN1; MIM 136535) play a role in cytoskeletal organization and/or establishment of cell polarity.
Synonyms:	Fmn2



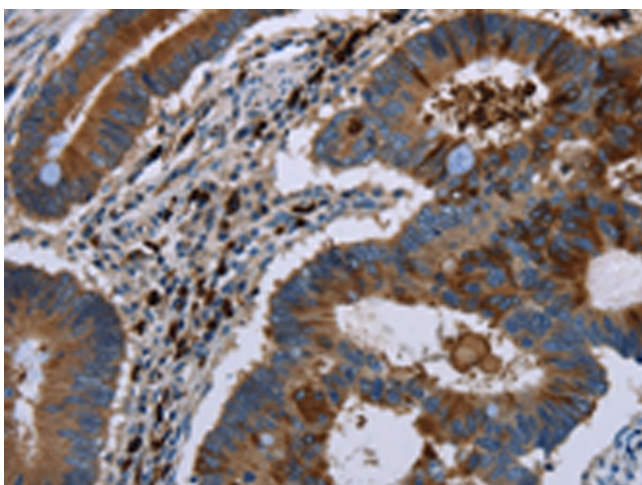
[View online »](#)

Product images:

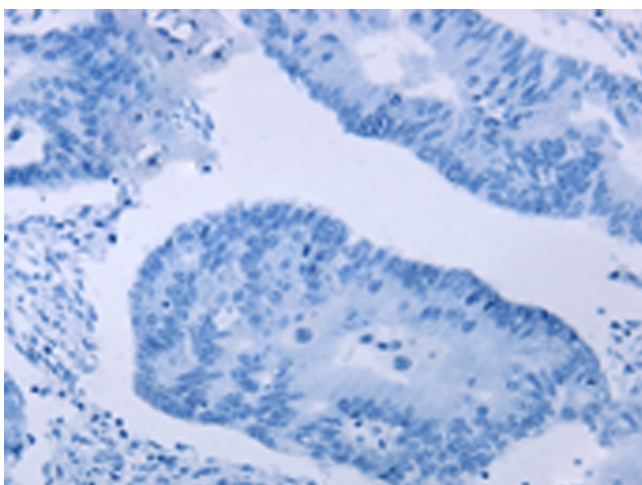
Immunohistochemistry of paraffin-embedded Human brain tissue using TA371350 (FMN2 Antibody) at dilution 1/20 (Original magnification: $\times 200$)



Immunohistochemistry of paraffin-embedded Human brain tissue using TA371350 (FMN2 Antibody) at dilution 1/20, treated with synthetic peptide. (Original magnification: $\times 200$)



Immunohistochemistry of paraffin-embedded Human colon cancer tissue using TA371350 (FMN2 Antibody) at dilution 1/20 (Original magnification: $\times 200$)



Immunohistochemistry of paraffin-embedded Human colon cancer tissue using TA371350 (FMN2 Antibody) at dilution 1/20, treated with synthetic peptide. (Original magnification: $\times 200$)