

## Product datasheet for **TA371338S**

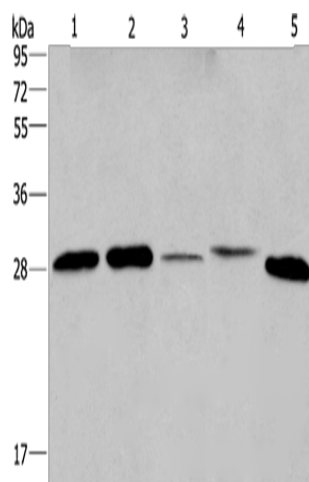
### ETFB Rabbit Polyclonal Antibody

#### Product data:

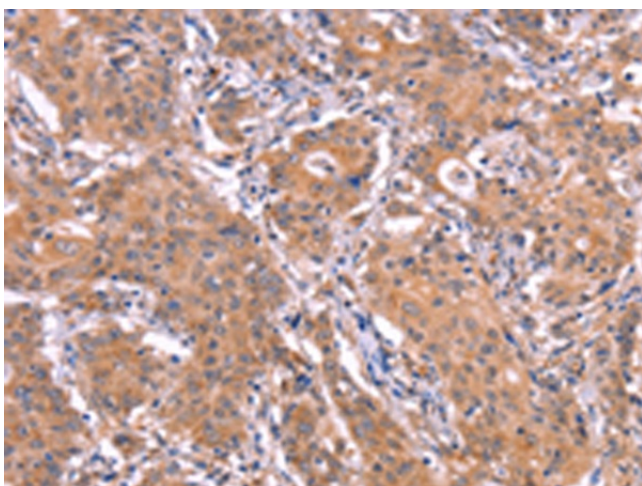
Product Type:	Primary Antibodies
Applications:	IHC, WB
Recommended Dilution:	WB: 500-2000 WB positive control: HepG2, A549 and Hela cells, human fetal liver and mouse liver tissue IHC: 25-100 Positive control: Human gastric cancer Predicted cell location: Cytoplasm
Reactivity:	Human, Mouse
Host:	Rabbit
Isotype:	IgG
Clonality:	Polyclonal
Immunogen:	Synthetic peptide of human ETFB
Formulation:	pH7.4 PBS, 0.05% NaN <sub>3</sub> , 40% Glycerol
Concentration:	lot specific
Purification:	Antigen affinity purification
Conjugation:	Unconjugated
Storage:	Store at -20°C.
Stability:	1 year
Predicted Protein Size:	28 kDa
Gene Name:	electron transfer flavoprotein beta subunit
Database Link:	<a href="#">Entrez Gene 2109 Human P38117</a>
Background:	This gene encodes electron-transfer-flavoprotein, beta polypeptide, which shuttles electrons between primary flavoprotein dehydrogenases involved in mitochondrial fatty acid and amino acid catabolism and the membrane-bound electron transfer flavoprotein ubiquinone oxidoreductase. The gene deficiencies have been implicated in type II glutaricaciduria. Alternatively spliced transcript variants have been found for this gene.
Synonyms:	Beta-ETF; FP585; MADD



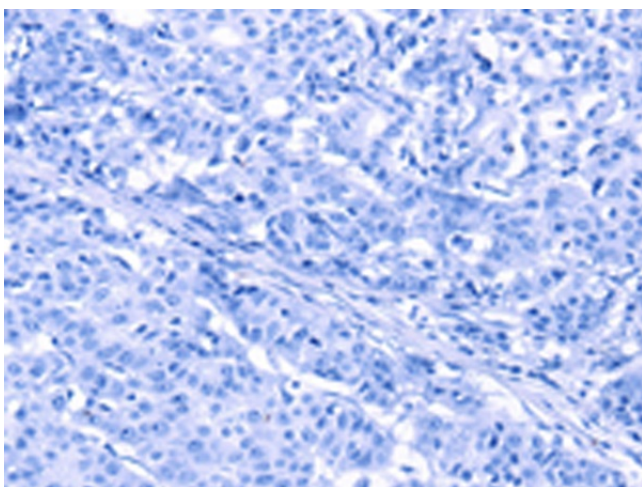
[View online »](#)

**Product images:**

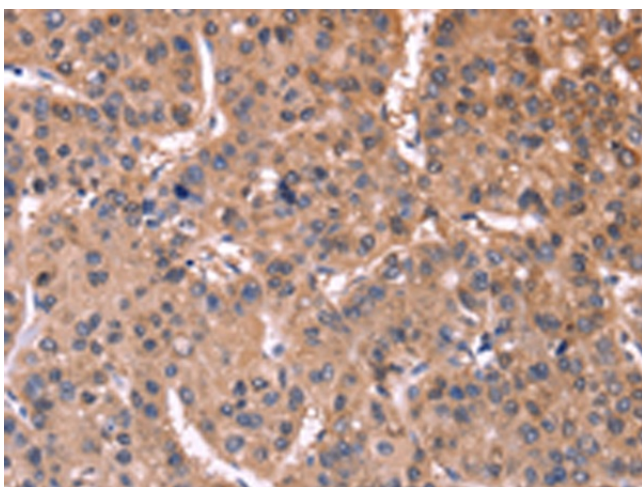
Gel: 10%SDS-PAGE  
Lysate: 40  $\mu$ g  
Lane 1-5: HepG2 cells  
A549 cells  
Hela cells  
human fetal liver tissue  
mouse liver tissue  
Primary antibody: [TA371338] (ETFB Antibody) at dilution 1/200  
Secondary antibody: Goat anti rabbit IgG at 1/8000 dilution  
Exposure time: 40 seconds



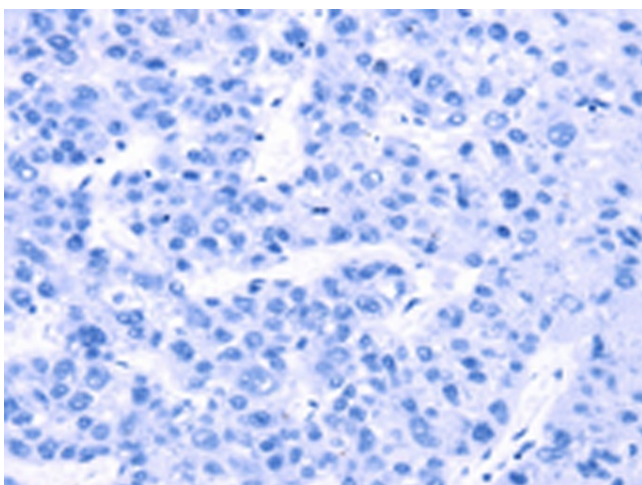
Immunohistochemistry of paraffin-embedded Human gastric cancer tissue using [TA371338] (ETFB Antibody) at dilution 1/25 (Original magnification:  $\times$ 200)



Immunohistochemistry of paraffin-embedded Human gastric cancer tissue using [TA371338] (ETFB Antibody) at dilution 1/25, treated with synthetic peptide. (Original magnification: x200)



Immunohistochemistry of paraffin-embedded Human liver cancer tissue using [TA371338] (ETFB Antibody) at dilution 1/25 (Original magnification: x200)



Immunohistochemistry of paraffin-embedded Human liver cancer tissue using [TA371338] (ETFB Antibody) at dilution 1/25, treated with synthetic peptide. (Original magnification: x200)