

Product datasheet for **TA371319**

Desmoglein 3 (DSG3) Rabbit Polyclonal Antibody

Product data:

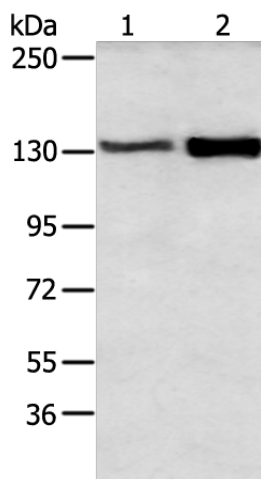
Product Type:	Primary Antibodies
Applications:	IHC, WB
Recommended Dilution:	WB: 200-1000 WB positive control: Human tongue and esophagus cancer tissue IHC: 20-100 Positive control: Human liver cancer Predicted cell location: Cell membrane
Reactivity:	Human
Host:	Rabbit
Isotype:	IgG
Clonality:	Polyclonal
Immunogen:	Synthetic peptide of human DSG3
Formulation:	pH7.4 PBS, 0.05% NaN ₃ , 40% Glycerol
Concentration:	lot specific
Purification:	Antigen affinity purification
Conjugation:	Unconjugated
Storage:	Store at -20°C.
Stability:	1 year
Predicted Protein Size:	108 kDa
Gene Name:	desmoglein 3
Database Link:	Entrez Gene 1830 Human P32926
Background:	Desmosomes are cell-cell junctions between epithelial, myocardial, and certain other cell types. Desmoglein 3 is a calcium-binding transmembrane glycoprotein component of desmosomes in vertebrate epithelial cells. Currently, three desmoglein subfamily members have been identified and all are members of the cadherin cell adhesion molecule superfamily. These desmoglein gene family members are located in a cluster on chromosome 18.



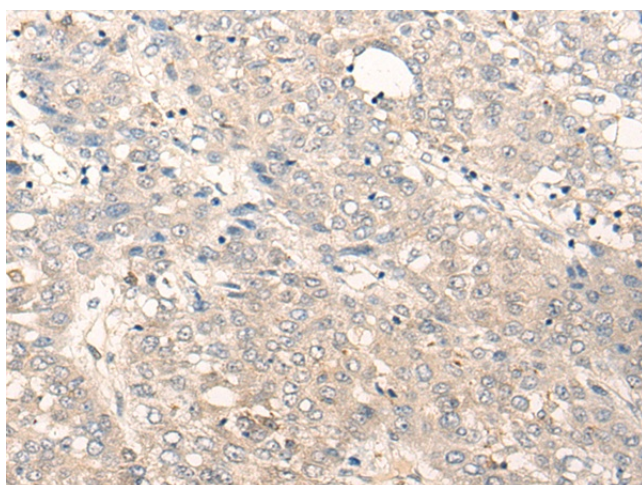
[View online »](#)

Synonyms: CDHF6; DKFZp686P23184; PVA

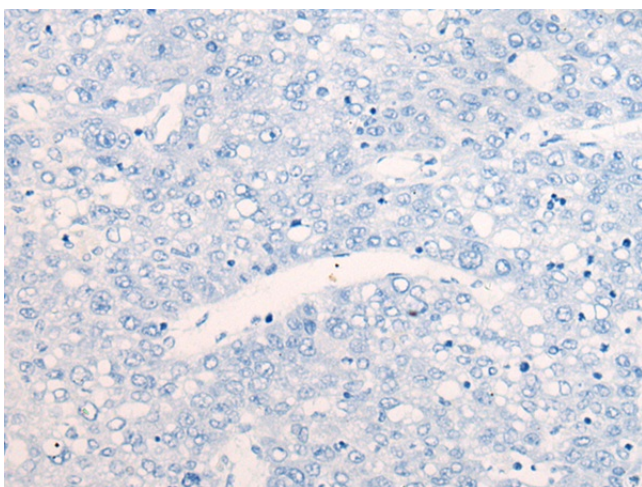
Product images:



Gel: 6%SDS-PAGE
 Lysate: 40 µg
 Lane 1-2: Human tongue and esophagus cancer tissue
 Primary antibody: TA371319 (DSG3 Antibody) at dilution 1/200
 Secondary antibody: Goat anti rabbit IgG at 1/8000 dilution
 Exposure time: 5 seconds



Immunohistochemistry of paraffin-embedded Human liver cancer tissue using TA371319 (DSG3 Antibody) at dilution 1/25 (Original magnification: ×200)



Immunohistochemistry of paraffin-embedded Human liver cancer tissue using TA371319 (DSG3 Antibody) at dilution 1/25, treated with synthetic peptide. (Original magnification: x200)