

## Product datasheet for **TA371302**

### Clathrin heavy chain (CLTC) Rabbit Polyclonal Antibody

#### Product data:

Product Type:	Primary Antibodies
Applications:	IHC, WB
Recommended Dilution:	WB: 200-1000 WB positive control: A172 and hela cells IHC: 25-100 Positive control: Human gastric cancer Predicted cell location: Cytoplasm
Reactivity:	Human, Mouse, Rat
Host:	Rabbit
Isotype:	IgG
Clonality:	Polyclonal
Immunogen:	Synthetic peptide of human CLTC
Formulation:	pH7.4 PBS, 0.05% NaN <sub>3</sub> , 40% Glycerol
Concentration:	lot specific
Purification:	Antigen affinity purification
Conjugation:	Unconjugated
Storage:	Store at -20°C.
Stability:	1 year
Predicted Protein Size:	192 kDa
Gene Name:	clathrin heavy chain
Database Link:	<a href="#">Entrez Gene 1213 Human Q00610</a>
Background:	Clathrin is a major protein component of the cytoplasmic face of intracellular organelles, called coated vesicles and coated pits. These specialized organelles are involved in the intracellular trafficking of receptors and endocytosis of a variety of macromolecules. The basic subunit of the clathrin coat is composed of three heavy chains and three light chains.
Synonyms:	CHC; CHC17; CLH-17; CLH17; CLTCL2; Hc; KIAA0034

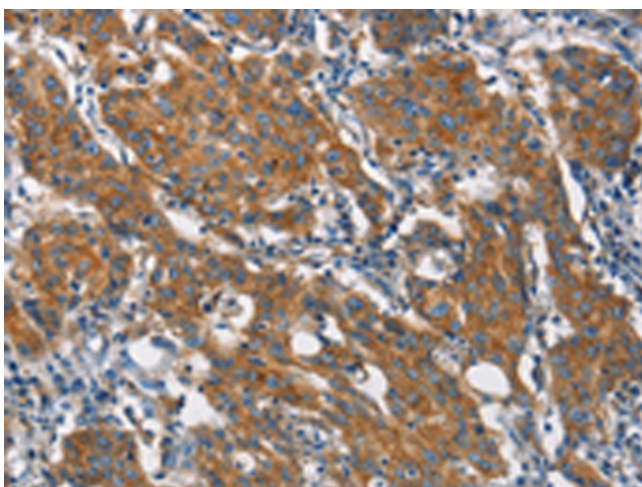


[View online »](#)

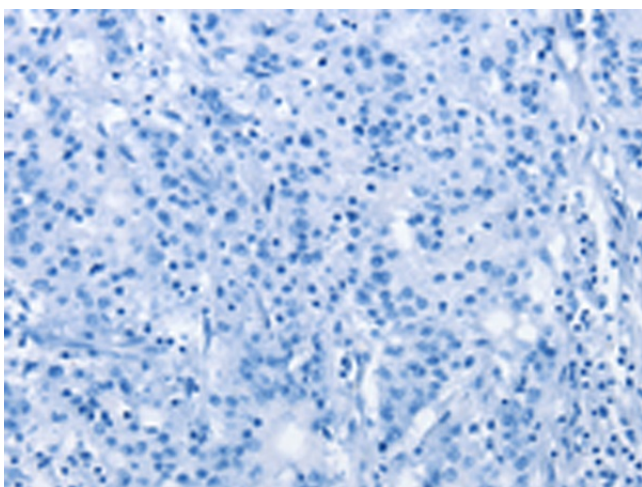
## Product images:



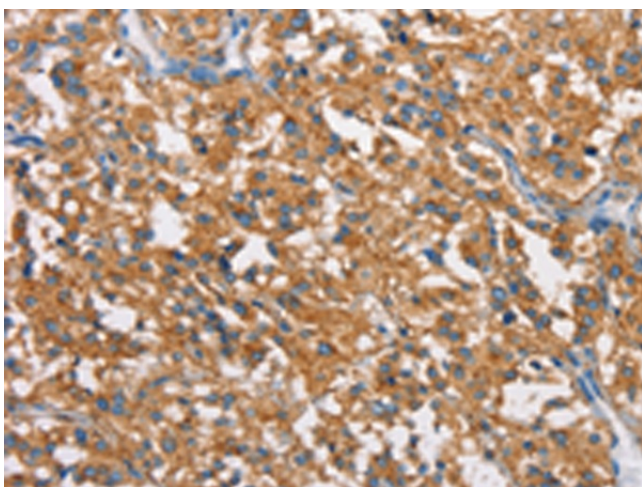
Gel: 6%SDS-PAGE  
Lysate: 40  $\mu$ g  
Lane 1-2: A172 cells  
hela cells  
Primary antibody: TA371302 (CLTC Antibody) at dilution 1/300  
Secondary antibody: Goat anti rabbit IgG at 1/8000 dilution  
Exposure time: 40 seconds



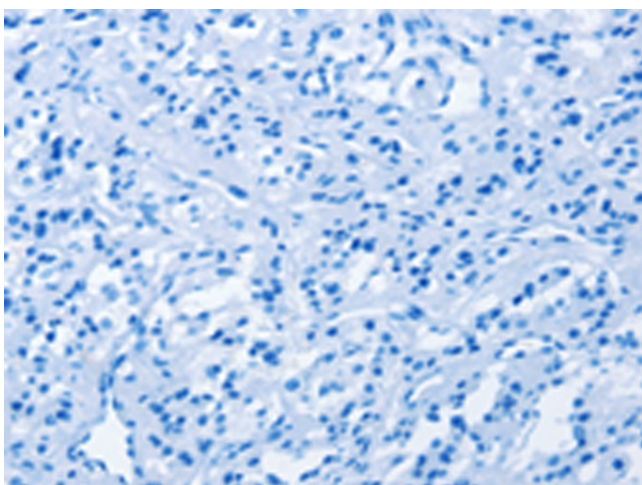
Immunohistochemistry of paraffin-embedded Human gastric cancer tissue using TA371302 (CLTC Antibody) at dilution 1/20 (Original magnification:  $\times$ 200)



Immunohistochemistry of paraffin-embedded Human gastric cancer tissue using TA371302 (CLTC Antibody) at dilution 1/20, treated with synthetic peptide. (Original magnification: ×200)



Immunohistochemistry of paraffin-embedded Human thyroid cancer tissue using TA371302 (CLTC Antibody) at dilution 1/20 (Original magnification: ×200)



Immunohistochemistry of paraffin-embedded Human thyroid cancer tissue using TA371302 (CLTC Antibody) at dilution 1/20, treated with synthetic peptide. (Original magnification: ×200)