

## Product datasheet for **TA371301S**

### CKAP4 Rabbit Polyclonal Antibody

#### Product data:

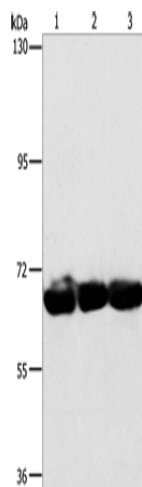
Product Type:	Primary Antibodies
Applications:	IHC, WB
Recommended Dilution:	WB: 1000-5000 WB positive control: 293T, hepG2 and A549 cells IHC: 25-100 Positive control: Human lung cancer Predicted cell location: Cytoplasm
Reactivity:	Human, Mouse
Host:	Rabbit
Isotype:	IgG
Clonality:	Polyclonal
Immunogen:	Synthetic peptide of human CKAP4
Formulation:	pH7.4 PBS, 0.05% NaN <sub>3</sub> , 40% Glycerol
Concentration:	lot specific
Purification:	Antigen affinity purification
Conjugation:	Unconjugated
Storage:	Store at -20°C.
Stability:	1 year
Predicted Protein Size:	66 kDa
Gene Name:	cytoskeleton-associated protein 4
Database Link:	<a href="#">Entrez Gene 10970 Human Q07065</a>
Background:	CKAP4 (cytoskeleton-associated protein 4), also known as p63, CLIMP-63 or ERGIC-63, is a 602 amino acid single-pass type II transmembrane protein that links the endoplasmic reticulum (ER) to the cytoskeleton. Considered a novel protein in maintaining ER morphology, CKAP4 anchors the ER to microtubules which is required for maintaining ER spatial distribution during interphase of the cell cycle. CKAP4 can be reversibly palmitoylated and phosphorylated and is a major substrate of the palmitoyl acyltransferase, ZDHHC2.



[View online »](#)

Synonyms: CLIMP-63; ERGIC-63; MGC99554; p63

### Product images:



Gel: 6%SDS-PAGE

Lysate: 40  $\mu$ g

Lane 1-3: 293T cells

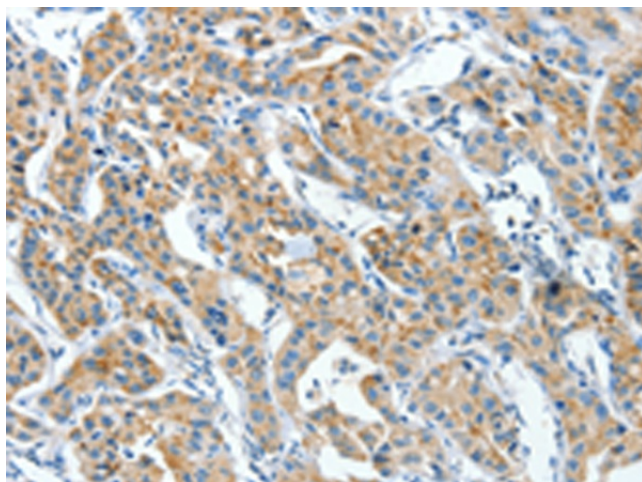
hepG2 cells

A549 cells

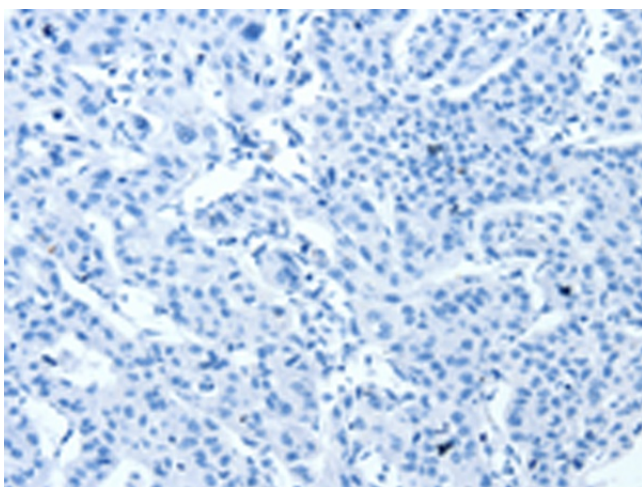
Primary antibody: [TA371301] (CKAP4 Antibody)  
at dilution 1/750

Secondary antibody: Goat anti rabbit IgG at  
1/8000 dilution

Exposure time: 1 minute



Immunohistochemistry of paraffin-embedded  
Human lung cancer tissue using [TA371301]  
(CKAP4 Antibody) at dilution 1/30 (Original  
magnification:  $\times$ 200)



Immunohistochemistry of paraffin-embedded Human lung cancer tissue using [TA371301] (CKAP4 Antibody) at dilution 1/30, treated with synthetic peptide. (Original magnification:  $\times 200$ )