

## Product datasheet for **TA371296S**

### **p16INK4A (CDKN2A) Rabbit Polyclonal Antibody**

#### **Product data:**

Product Type:	Primary Antibodies
Applications:	IHC
Recommended Dilution:	IHC: 50-200 Positive control: Human gastric cancer Predicted cell location: Cytoplasm
Reactivity:	Human
Host:	Rabbit
Isotype:	IgG
Clonality:	Polyclonal
Immunogen:	Synthetic peptide of human CDKN2A
Formulation:	pH7.4 PBS, 0.05% NaN3, 40% Glycerol
Concentration:	lot specific
Purification:	Antigen affinity purification
Conjugation:	Unconjugated
Storage:	Store at -20°C.
Stability:	1 year
Gene Name:	cyclin-dependent kinase inhibitor 2A
Database Link:	<a href="#">Entrez Gene 1029 Human P42771</a>

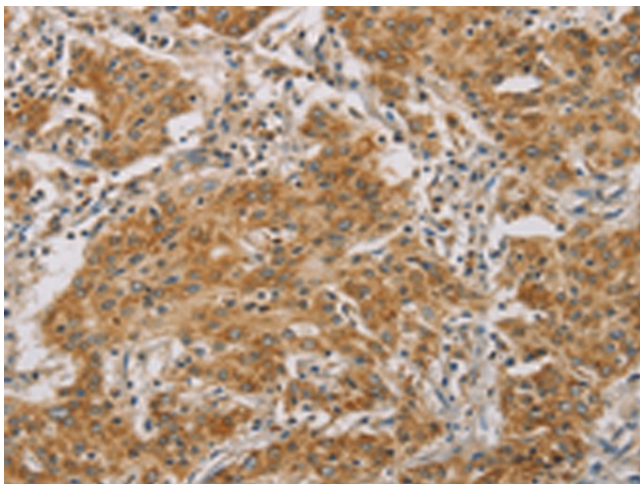
**Background:** This gene generates several transcript variants which differ in their first exons. At least three alternatively spliced variants encoding distinct proteins have been reported, two of which encode structurally related isoforms known to function as inhibitors of CDK4 kinase. The remaining transcript includes an alternate first exon located 20 Kb upstream of the remainder of the gene; this transcript contains an alternate open reading frame (ARF) that specifies a protein which is structurally unrelated to the products of the other variants. This ARF product functions as a stabilizer of the tumor suppressor protein p53 as it can interact with, and sequester, the E3 ubiquitin-protein ligase MDM2, a protein responsible for the degradation of p53.



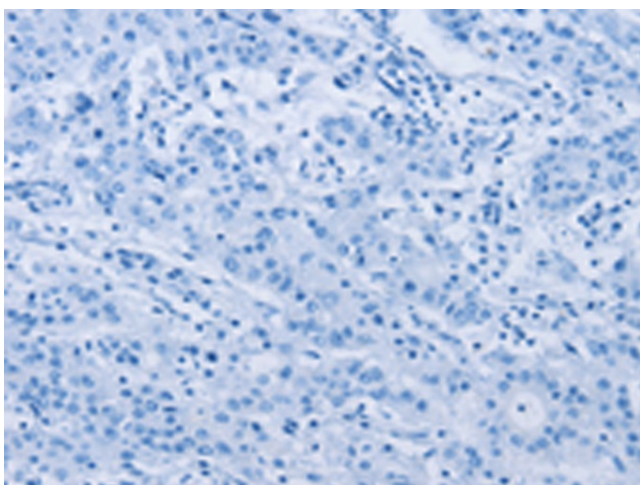
[View online »](#)

**Synonyms:** ARF; CDK4I; CDKN2; CMM2; INK4; INK4a; MLM; MTS-1; MTS1; OTTHUMP00000021148; p14; p14ARF; p16; p16-INK4; p16-INK4a; p16INK4; p16INK4a; p19; p19Arf; TP16

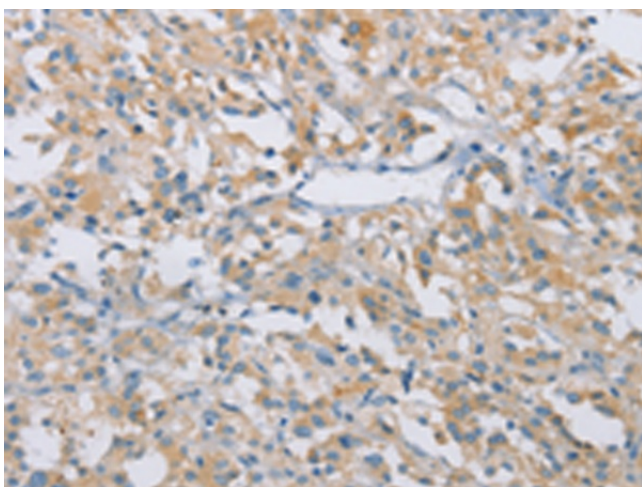
**Product images:**



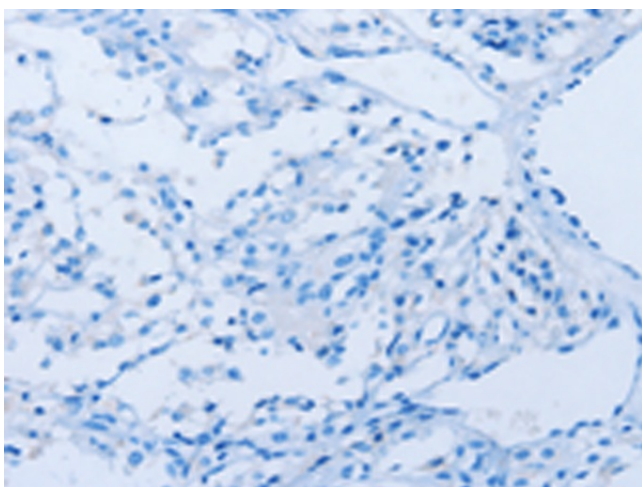
Immunohistochemistry of paraffin-embedded Human gastric cancer tissue using [TA371296] (CDKN2A Antibody) at dilution 1/50 (Original magnification:  $\times 200$ )



Immunohistochemistry of paraffin-embedded Human gastric cancer tissue using [TA371296] (CDKN2A Antibody) at dilution 1/50, treated with synthetic peptide. (Original magnification:  $\times 200$ )



Immunohistochemistry of paraffin-embedded Human thyroid cancer tissue using [TA371296] (CDKN2A Antibody) at dilution 1/50 (Original magnification:  $\times 200$ )



Immunohistochemistry of paraffin-embedded Human thyroid cancer tissue using [TA371296] (CDKN2A Antibody) at dilution 1/50, treated with synthetic peptide. (Original magnification:  $\times 200$ )