

## Product datasheet for **TA371295**

### NUF2 Rabbit Polyclonal Antibody

#### Product data:

Product Type:	Primary Antibodies
Applications:	IHC, WB
Recommended Dilution:	WB: 500-2000 WB positive control: Hela and LO2 cell lysates IHC: 50-200 Positive control: Human esophagus cancer Predicted cell location: Cytoplasm
Reactivity:	Human
Host:	Rabbit
Isotype:	IgG
Clonality:	Polyclonal
Immunogen:	Synthetic peptide of human NUF2
Formulation:	pH7.4 PBS, 0.05% NaN <sub>3</sub> , 40% Glycerol
Concentration:	lot specific
Purification:	Antigen affinity purification
Conjugation:	Unconjugated
Storage:	Store at -20°C.
Stability:	1 year
Predicted Protein Size:	54 kDa
Gene Name:	NUF2, NDC80 kinetochore complex component
Database Link:	<a href="#">Entrez Gene 83540 Human</a> <a href="#">Q9BZD4</a>



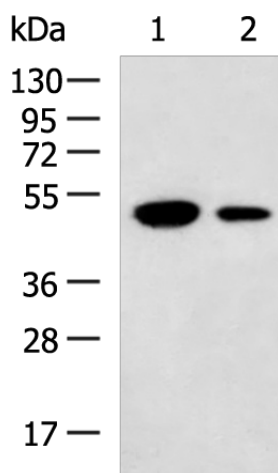
[View online »](#)

**Background:**

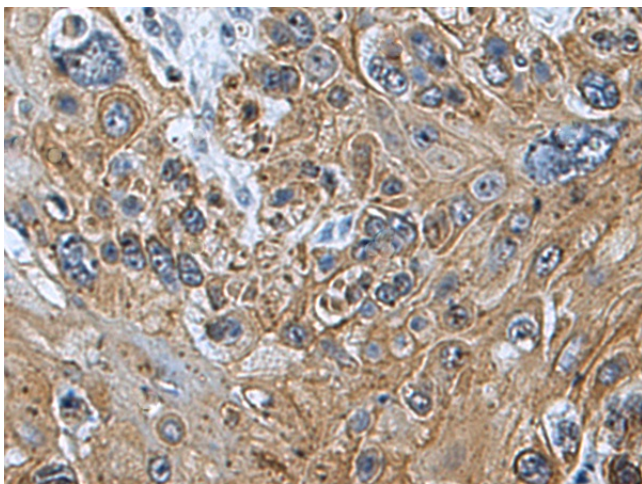
This gene encodes a protein that is highly similar to yeast Nuf2, a component of a conserved protein complex associated with the centromere. Yeast Nuf2 disappears from the centromere during meiotic prophase when centromeres lose their connection to the spindle pole body, and plays a regulatory role in chromosome segregation. The encoded protein is found to be associated with centromeres of mitotic HeLa cells, which suggests that this protein is a functional homolog of yeast Nuf2. Alternatively spliced transcript variants that encode the same protein have been described.

**Synonyms:**

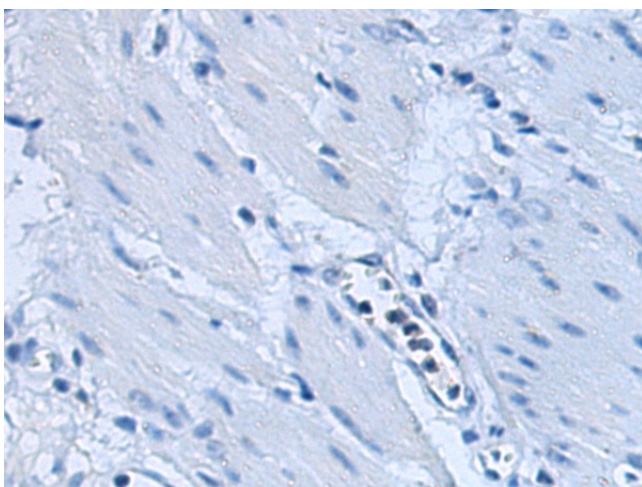
CDCA1; CT106; hNuf2; hNuf2R; hsNuf2; NUF2R

**Product images:**


Gel: 8%SDS-PAGE  
 Lysate: 40  $\mu$ g  
 Lane 1-2: HeLa and LO2 cell lysates  
 Primary antibody: TA371295 (NUF2 Antibody) at dilution 1/400  
 Secondary antibody: Goat anti rabbit IgG at 1/5000 dilution  
 Exposure time: 10 minutes



Immunohistochemistry of paraffin-embedded Human esophagus cancer tissue using TA371295 (NUF2 Antibody) at dilution 1/60 (Original magnification:  $\times$ 200)



Immunohistochemistry of paraffin-embedded Human esophagus cancer tissue using TA371295 (NUF2 Antibody) at dilution 1/60, treated with synthetic peptide. (Original magnification: ×200)