

Product datasheet for **TA371292S**

CD59 Rabbit Polyclonal Antibody

Product data:

Product Type:	Primary Antibodies
Applications:	IHC
Recommended Dilution:	IHC: 25-100 Positive control: Human lung cancer Predicted cell location: Cytoplasm
Reactivity:	Human
Host:	Rabbit
Isotype:	IgG
Clonality:	Polyclonal
Immunogen:	Synthetic peptide of human CD59
Formulation:	pH7.4 PBS, 0.05% NaN ₃ , 40% Glycerol
Concentration:	lot specific
Purification:	Antigen affinity purification
Conjugation:	Unconjugated
Storage:	Store at -20°C.
Stability:	1 year
Gene Name:	CD59 molecule
Database Link:	Entrez Gene 966 Human P13987

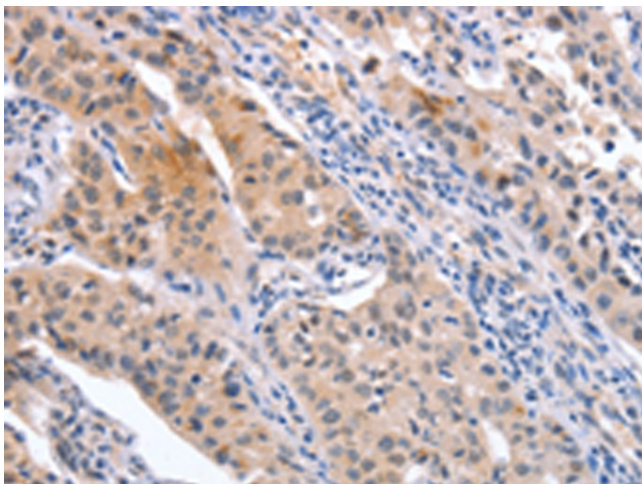
Background: This gene encodes a cell surface glycoprotein that regulates complement-mediated cell lysis, and it is involved in lymphocyte signal transduction. This protein is a potent inhibitor of the complement membrane attack complex, whereby it binds complement C8 and/or C9 during the assembly of this complex, thereby inhibiting the incorporation of multiple copies of C9 into the complex, which is necessary for osmolytic pore formation. This protein also plays a role in signal transduction pathways in the activation of T cells. Mutations in this gene cause CD59 deficiency, a disease resulting in hemolytic anemia and thrombosis, and which causes cerebral infarction.



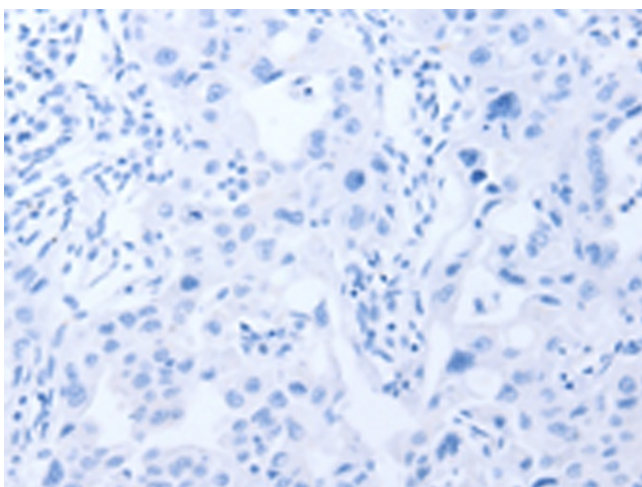
[View online »](#)

Synonyms: 1F5; 16.3A5; EJ16; EJ30; EL32; FLJ38134; FLJ92039; G344; HRF-20; HRF20; MAC-IP; MACIF; MEM43; MGC2354; MIC11; MIN1; MIN2; MIN3; MIRL; MSK21; p18-20; protectin

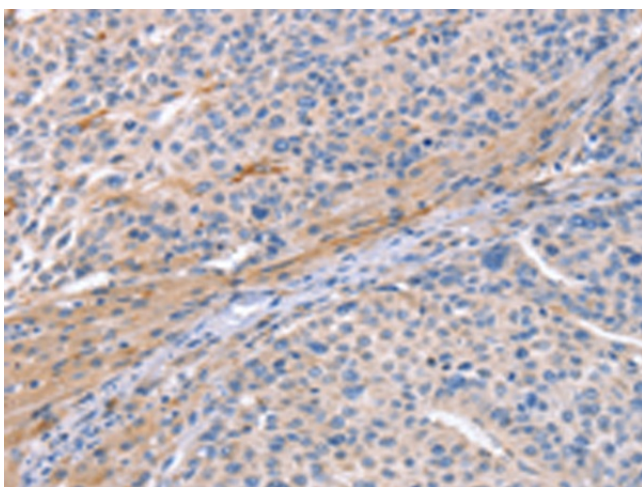
Product images:



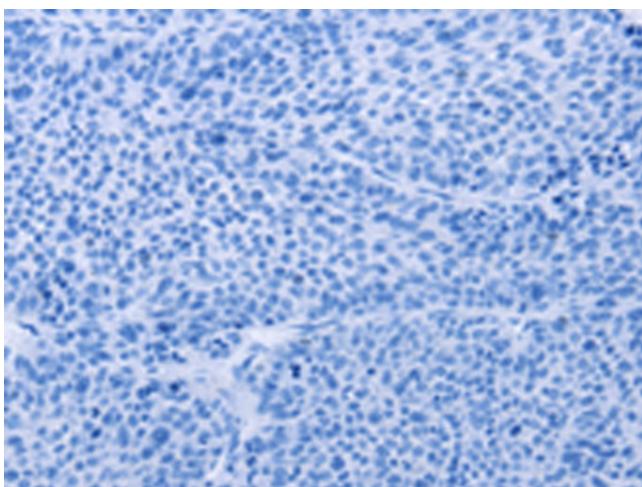
Immunohistochemistry of paraffin-embedded Human lung cancer tissue using [TA371292] (CD59 Antibody) at dilution 1/30 (Original magnification: x200)



Immunohistochemistry of paraffin-embedded Human lung cancer tissue using [TA371292] (CD59 Antibody) at dilution 1/30, treated with synthetic peptide. (Original magnification: x200)



Immunohistochemistry of paraffin-embedded Human liver cancer tissue using [TA371292] (CD59 Antibody) at dilution 1/30 (Original magnification: $\times 200$)



Immunohistochemistry of paraffin-embedded Human liver cancer tissue using [TA371292] (CD59 Antibody) at dilution 1/30, treated with synthetic peptide. (Original magnification: $\times 200$)