

Product datasheet for **TA371291S**

CD56 (NCAM1) Rabbit Polyclonal Antibody

Product data:

Product Type:	Primary Antibodies
Applications:	IHC, WB
Recommended Dilution:	WB: 500-2000 WB positive control: Human fetal brain tissue lysate IHC: 20-100 Positive control: Human tonsil Predicted cell location: Cell membrane
Reactivity:	Human, Mouse, Rat
Host:	Rabbit
Isotype:	IgG
Clonality:	Polyclonal
Immunogen:	Synthetic peptide of human NCAM1
Formulation:	pH7.4 PBS, 0.05% NaN ₃ , 40% Glycerol
Concentration:	lot specific
Purification:	Antigen affinity purification
Conjugation:	Unconjugated
Storage:	Store at -20°C.
Stability:	1 year
Predicted Protein Size:	95 kDa
Gene Name:	neural cell adhesion molecule 1
Database Link:	Entrez Gene 4684 Human P13591

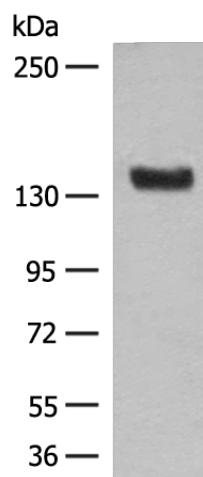
Background: This gene encodes a cell adhesion protein which is a member of the immunoglobulin superfamily. The encoded protein is involved in cell-to-cell interactions as well as cell-matrix interactions during development and differentiation. The encoded protein has been shown to be involved in development of the nervous system, and for cells involved in the expansion of T cells and dendritic cells which play an important role in immune surveillance. Alternative splicing results in multiple transcript variants.



[View online »](#)

Synonyms: CD56; MSK39; N-CAM-1; NCAM; NCAM-1

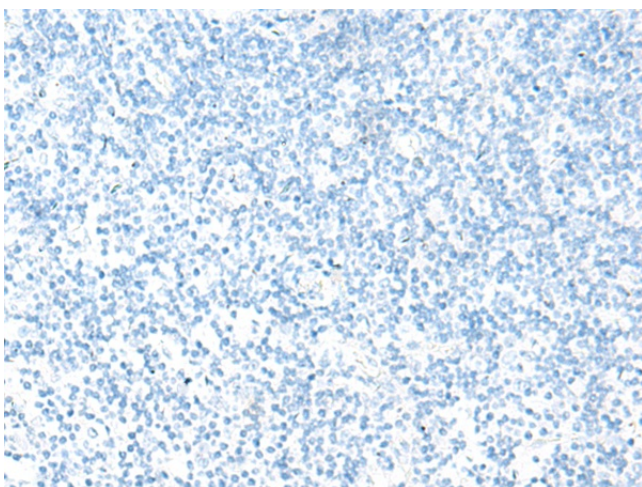
Product images:



Gel: 6%SDS-PAGE
Lysate: 40 μ g
Lane: Human fetal brain tissue lysate
Primary antibody: [TA371291] (NCAM1 Antibody) at dilution 1/200
Secondary antibody: Goat anti rabbit IgG at 1/8000 dilution
Exposure time: 15 seconds



Immunohistochemistry of paraffin-embedded Human tonsil tissue using [TA371291] (NCAM1 Antibody) at dilution 1/20 (Original magnification: \times 200)



Immunohistochemistry of paraffin-embedded Human tonsil tissue using [TA371291] (NCAM1 Antibody) at dilution 1/20, treated with synthetic peptide. (Original magnification: $\times 200$)