

## Product datasheet for **TA371289S**

### CD47 Rabbit Polyclonal Antibody

#### Product data:

Product Type:	Primary Antibodies
Applications:	IHC, WB
Recommended Dilution:	WB: 500-2000 WB positive control: Human metastatic poorly differentiated adenocarcinoma of the ovary tissue, Human ovarian cancer tissue lysate, Human ovarian cancer ( granulosa cell tumor ) tissue lysates IHC: 50-200 Positive control: Human brain Predicted cell location: Cytoplasm
Reactivity:	Human
Host:	Rabbit
Isotype:	IgG
Clonality:	Polyclonal
Immunogen:	Synthetic peptide of human CD47
Formulation:	pH7.4 PBS, 0.05% NaN <sub>3</sub> , 40% Glycerol
Concentration:	lot specific
Purification:	Antigen affinity purification
Conjugation:	Unconjugated
Storage:	Store at -20°C.
Stability:	1 year
Predicted Protein Size:	35 kDa
Gene Name:	CD47 molecule
Database Link:	<a href="#">Entrez Gene 961 Human Q08722</a>



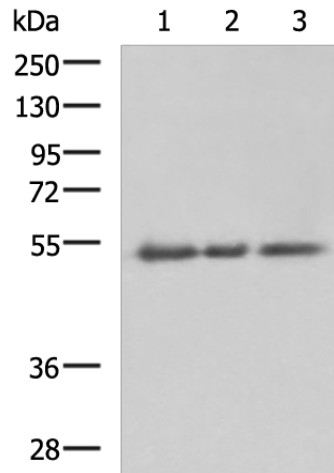
[View online »](#)

**Background:**

This gene encodes a membrane protein, which is involved in the increase in intracellular calcium concentration that occurs upon cell adhesion to extracellular matrix. The encoded protein is also a receptor for the C-terminal cell binding domain of thrombospondin, and it may play a role in membrane transport and signal transduction. This gene has broad tissue distribution, and is reduced in expression on Rh erythrocytes. Alternatively spliced transcript variants have been found for this gene.

**Synonyms:**

IAP; MER6; OA3

**Product images:**


Gel: 8%SDS-PAGE

Lysate: 40 µg

Lane 1-3: Human metastatic poorly differentiated adenocarcinoma of the ovary tissue

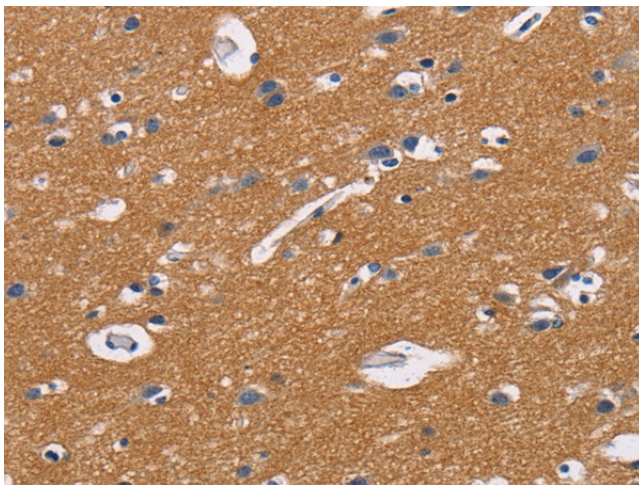
Human ovarian cancer tissue lysate

Human ovarian cancer ( granulosa cell tumor ) tissue lysates

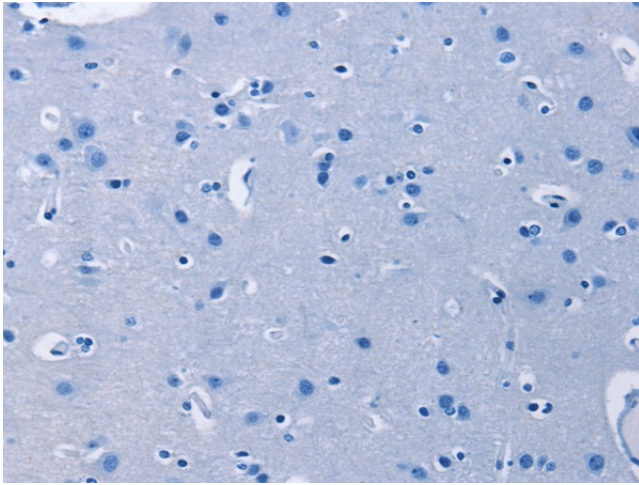
Primary antibody: [TA371289] (CD47 Antibody) at dilution 1/600

Secondary antibody: Goat anti rabbit IgG at 1/5000 dilution

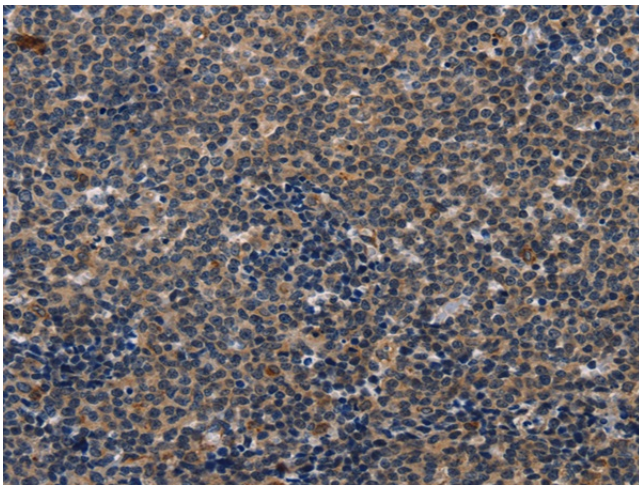
Exposure time: 3 minutes



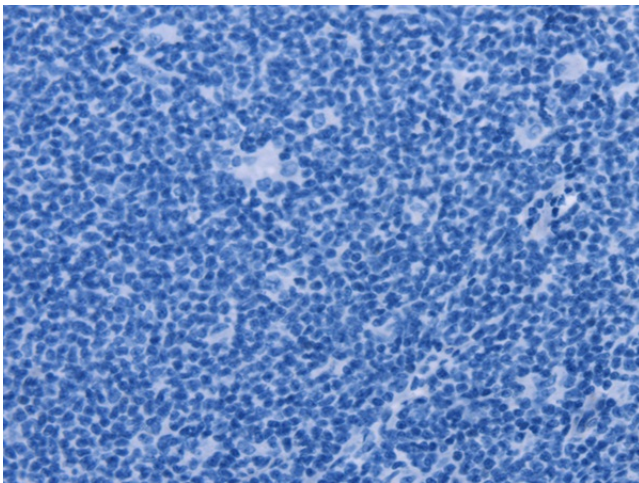
Immunohistochemistry of paraffin-embedded Human brain tissue using [TA371289] (CD47 Antibody) at dilution 1/50 (Original magnification: ×200)



Immunohistochemistry of paraffin-embedded Human brain tissue using [TA371289] (CD47 Antibody) at dilution 1/50, treated with synthetic peptide. (Original magnification:  $\times 200$ )



Immunohistochemistry of paraffin-embedded Human lymphoma tissue using [TA371289] (CD47 Antibody) at dilution 1/50 (Original magnification:  $\times 200$ )



Immunohistochemistry of paraffin-embedded Human lymphoma tissue using [TA371289] (CD47 Antibody) at dilution 1/50, treated with synthetic peptide. (Original magnification:  $\times 200$ )