

## Product datasheet for **TA371284S**

### CCR6 Rabbit Polyclonal Antibody

#### Product data:

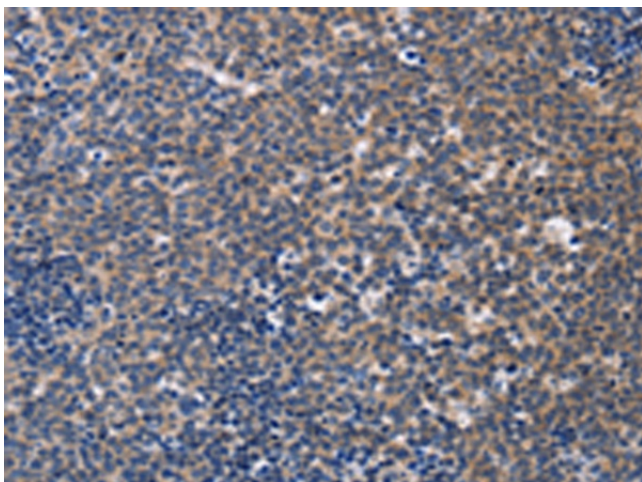
Product Type:	Primary Antibodies
Applications:	IHC
Recommended Dilution:	IHC: 50-200 Positive control: Human Lymphoma Predicted cell location: Cytoplasm
Reactivity:	Human
Host:	Rabbit
Isotype:	IgG
Clonality:	Polyclonal
Immunogen:	Synthetic peptide of human CCR6
Formulation:	pH7.4 PBS, 0.05% NaN <sub>3</sub> , 40% Glycerol
Concentration:	lot specific
Purification:	Antigen affinity purification
Conjugation:	Unconjugated
Storage:	Store at -20°C.
Stability:	1 year
Gene Name:	C-C motif chemokine receptor 6
Database Link:	<a href="#">Entrez Gene 1235 Human P51684</a>

**Background:** This gene encodes a member of the beta chemokine receptor family, which is predicted to be a seven transmembrane protein similar to G protein-coupled receptors. The gene is preferentially expressed by immature dendritic cells and memory T cells. The ligand of this receptor is macrophage inflammatory protein 3 alpha (MIP-3 alpha). This receptor has been shown to be important for B-lineage maturation and antigen-driven B-cell differentiation, and it may regulate the migration and recruitment of dendritic and T cells during inflammatory and immunological responses.

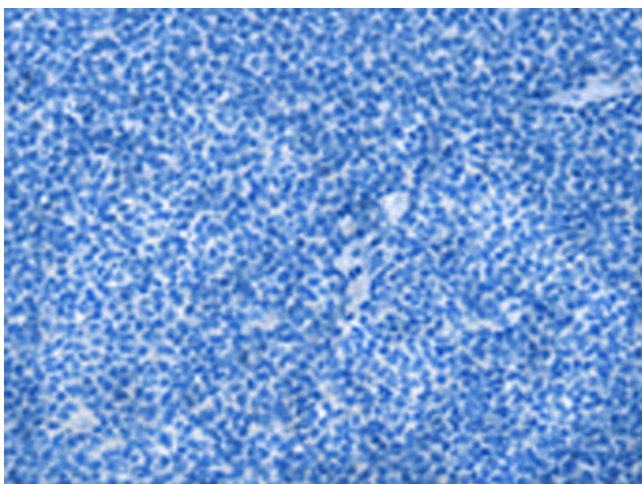
**Synonyms:** BN-1; CC-CKR-6; CCR-6; CD196; CKR-L3; CKR6; CKRL3; CMKBR6; DCR2; DRY-6; DRY6; GPR-CY4; GPR29; GPRCY4; OTTHUMP00000017618; STRL22



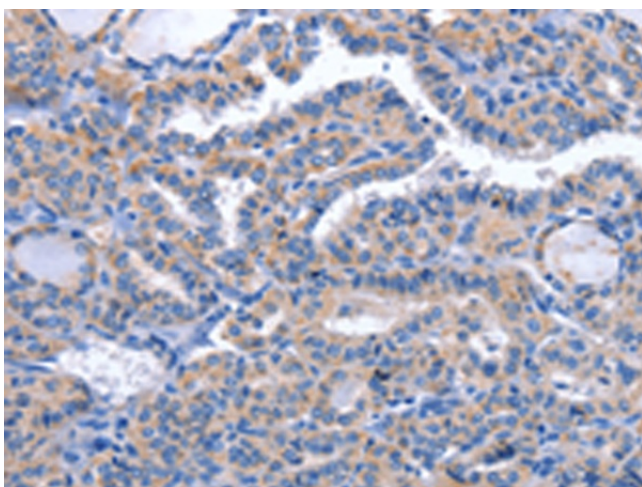
[View online »](#)

**Product images:**

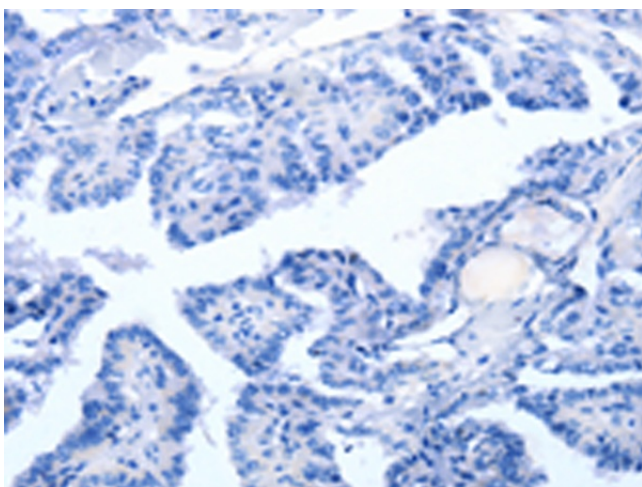
Immunohistochemistry of paraffin-embedded Human Lymphoma tissue using [TA371284] (CCR6 Antibody) at dilution 1/50 (Original magnification:  $\times 200$ )



Immunohistochemistry of paraffin-embedded Human Lymphoma tissue using [TA371284] (CCR6 Antibody) at dilution 1/50, treated with synthetic peptide. (Original magnification:  $\times 200$ )



Immunohistochemistry of paraffin-embedded Human thyroid cancer tissue using [TA371284] (CCR6 Antibody) at dilution 1/50 (Original magnification:  $\times 200$ )



Immunohistochemistry of paraffin-embedded Human thyroid cancer tissue using [TA371284] (CCR6 Antibody) at dilution 1/50, treated with synthetic peptide. (Original magnification:  $\times 200$ )