

Product datasheet for **TA371281S**

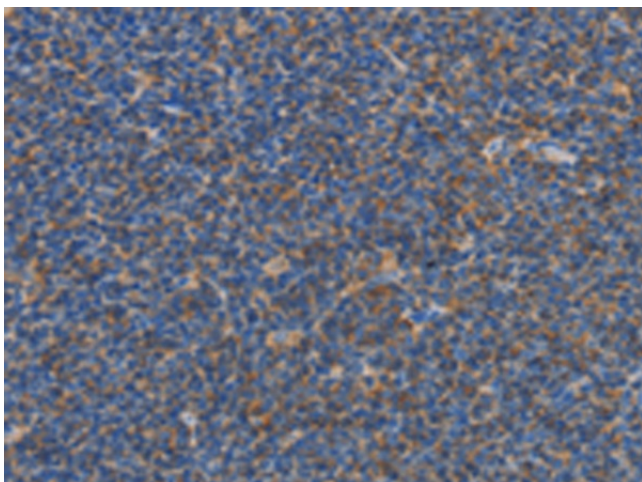
CARD6 Rabbit Polyclonal Antibody

Product data:

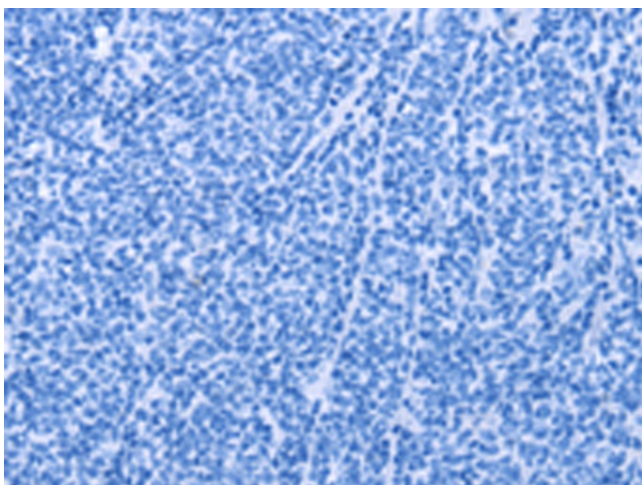
Product Type:	Primary Antibodies
Applications:	IHC
Recommended Dilution:	IHC: 25-100 Positive control: Human Lymphoma Predicted cell location: Cytoplasm
Reactivity:	Human
Host:	Rabbit
Isotype:	IgG
Clonality:	Polyclonal
Immunogen:	Synthetic peptide of human CARD6
Formulation:	pH7.4 PBS, 0.05% NaN ₃ , 40% Glycerol
Concentration:	lot specific
Purification:	Antigen affinity purification
Conjugation:	Unconjugated
Storage:	Store at -20°C.
Stability:	1 year
Gene Name:	caspase recruitment domain family member 6
Database Link:	Entrez Gene 84674 Human Q9BX69
Background:	This gene encodes a protein that contains a caspase recruitment domain (CARD), an antiparallel six-helical bundle that mediates homotypic protein-protein interactions. The encoded protein is a microtubule-associated protein that has been shown to interact with receptor-interacting protein kinases and positively modulate signal transduction pathways converging on activation of the inducible transcription factor NF-κB.
Synonyms:	CINCIN1



[View online »](#)

Product images:

Immunohistochemistry of paraffin-embedded Human Lymphoma tissue using [TA371281] (CARD6 Antibody) at dilution 1/60 (Original magnification: $\times 200$)



Immunohistochemistry of paraffin-embedded Human Lymphoma tissue using [TA371281] (CARD6 Antibody) at dilution 1/60, treated with synthetic peptide. (Original magnification: $\times 200$)