

## Product datasheet for **TA371278**

### CAMTA1 Rabbit Polyclonal Antibody

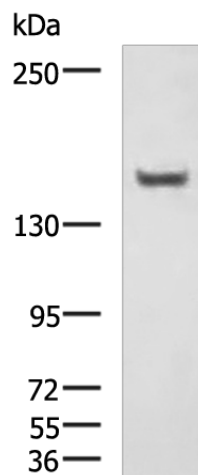
#### Product data:

Product Type:	Primary Antibodies
Applications:	WB
Recommended Dilution:	WB: 200-1000 WB positive control: Mouse brain tissue lysate
Reactivity:	Human, Mouse
Host:	Rabbit
Isotype:	IgG
Clonality:	Polyclonal
Immunogen:	Synthetic peptide of human CAMTA1
Formulation:	pH7.4 PBS, 0.05% NaN <sub>3</sub> , 40% Glycerol
Concentration:	lot specific
Purification:	Antigen affinity purification
Conjugation:	Unconjugated
Storage:	Store at -20°C.
Stability:	1 year
Predicted Protein Size:	184 kDa
Gene Name:	calmodulin binding transcription activator 1
Database Link:	<a href="#">Entrez Gene 23261 Human Q9Y6Y1</a>
Background:	The protein encoded by this gene contains a CG1 DNA-binding domain, a transcription factor immunoglobulin domain, ankyrin repeats, and calmodulin-binding IQ motifs. The encoded protein is thought to be a transcription factor and may be a tumor suppressor. However, a translocation event is sometimes observed between this gene and the WWTR1 gene, with the resulting WWTR1-CAMTA1 oncoprotein leading to epithelioid hemangioendothelioma, a malignant vascular cancer.
Synonyms:	KIAA0833



[View online »](#)

## Product images:



Gel: 6%SDS-PAGE

Lysate: 40  $\mu$ g

Lane: Mouse brain tissue lysate

Primary antibody: TA371278 (CAMTA1 Antibody)  
at dilution 1/400

Secondary antibody: Goat anti rabbit IgG at  
1/5000 dilution

Exposure time: 3 minutes