

Product datasheet for **TA371243**

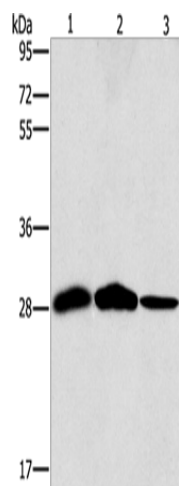
SPR Rabbit Polyclonal Antibody

Product data:

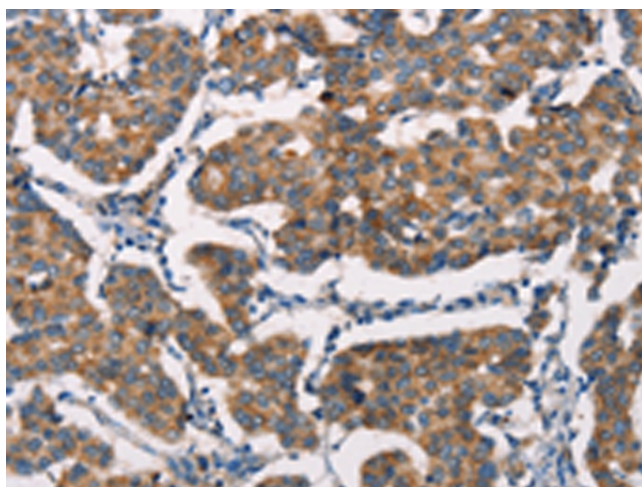
Product Type:	Primary Antibodies
Applications:	IHC, WB
Recommended Dilution:	WB: 1000-5000 WB positive control: Mouse liver and human chromaffin cells tumor tissue, hepG2 cells IHC: 25-100 Positive control: Human breast cancer Predicted cell location: Cytoplasm
Reactivity:	Human, Mouse
Host:	Rabbit
Isotype:	IgG
Clonality:	Polyclonal
Immunogen:	Synthetic peptide of human SPR
Formulation:	pH7.4 PBS, 0.05% NaN ₃ , 40% Glycerol
Concentration:	lot specific
Purification:	Antigen affinity purification
Conjugation:	Unconjugated
Storage:	Store at -20°C.
Stability:	1 year
Predicted Protein Size:	28 kDa
Gene Name:	sepiapterin reductase (7,8-dihydrobiopterin:NADP+ oxidoreductase)
Database Link:	Entrez Gene 6697 Human P35270
Background:	This gene encodes an aldo-keto reductase that catalyzes the NADPH-dependent reduction of pteridine derivatives and is important in the biosynthesis of tetrahydrobiopterin (BH ₄). Mutations in this gene result in DOPA-responsive dystonia due to sepiapterin reductase deficiency. A pseudogene has been identified on chromosome 1.
Synonyms:	SDR38C1



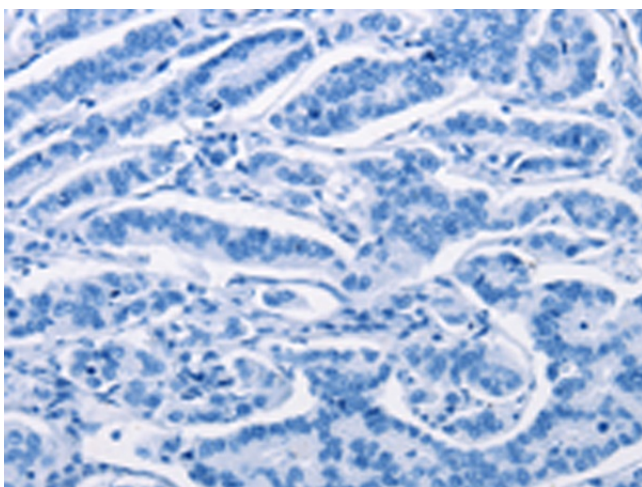
[View online »](#)

Product images:

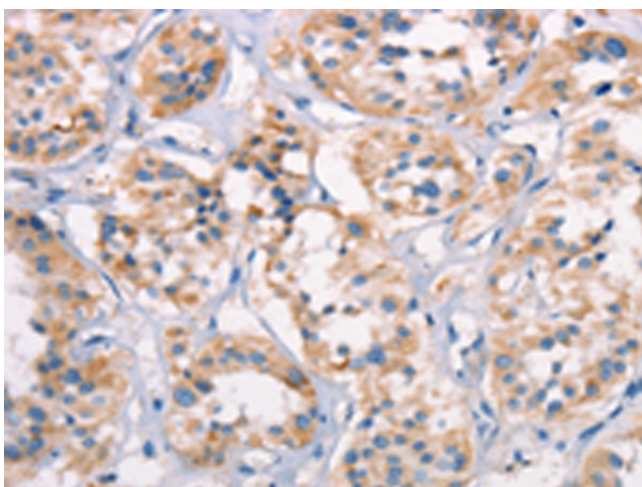
Gel: 10%SDS-PAGE
Lysate: 40 µg
Lane 1-3: Mouse liver tissue
human chromaffin cell tumor tissue
hepG2 cells
Primary antibody: TA371243 (SPR Antibody) at
dilution 1/1500
Secondary antibody: Goat anti rabbit IgG at
1/8000 dilution
Exposure time: 10 seconds



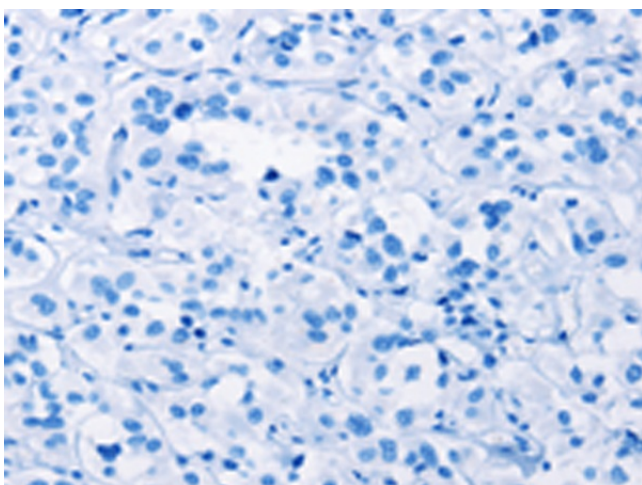
Immunohistochemistry of paraffin-embedded
Human breast cancer tissue using TA371243 (SPR
Antibody) at dilution 1/20 (Original magnification:
×200)



Immunohistochemistry of paraffin-embedded Human breast cancer tissue using TA371243 (SPR Antibody) at dilution 1/20, treated with synthetic peptide. (Original magnification: $\times 200$)



Immunohistochemistry of paraffin-embedded Human thyroid cancer tissue using TA371243 (SPR Antibody) at dilution 1/20 (Original magnification: $\times 200$)



Immunohistochemistry of paraffin-embedded Human thyroid cancer tissue using TA371243 (SPR Antibody) at dilution 1/20, treated with synthetic peptide. (Original magnification: $\times 200$)