

## Product datasheet for **TA371242**

### **MOSC1 (MARC1) Rabbit Polyclonal Antibody**

#### **Product data:**

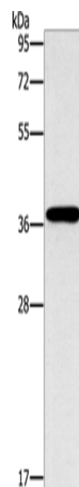
Product Type:	Primary Antibodies
Applications:	IHC, WB
Recommended Dilution:	WB: 500-2000 WB positive control: HepG2 cells IHC: 50-200 Positive control: Human gastric cancer Predicted cell location: Cytoplasm
Reactivity:	Human
Host:	Rabbit
Isotype:	IgG
Clonality:	Polyclonal
Immunogen:	Synthetic peptide of human MTARC1
Formulation:	pH7.4 PBS, 0.05% NaN <sub>3</sub> , 40% Glycerol
Concentration:	lot specific
Purification:	Antigen affinity purification
Conjugation:	Unconjugated
Storage:	Store at -20°C.
Stability:	1 year
Predicted Protein Size:	37 kDa
Gene Name:	mitochondrial amidoxime reducing component 1
Database Link:	<a href="#">Entrez Gene 64757 Human Q5VT66</a>
Background:	MOSC1 (MOCO sulphurase C-terminal domain containing 1), also known as MARC1, is a 337 amino acid mitochondrial protein that is thought to function as an oxidoreductase. Existing as three alternatively spliced isoforms, MOSC1 contains one MOSC domain and binds molybdenum as a cofactor. The gene encoding MOSC1 maps to human chromosome 1, which spans 260 million base pairs, contains over 3,000 genes and comprises nearly 8% of the human genome.



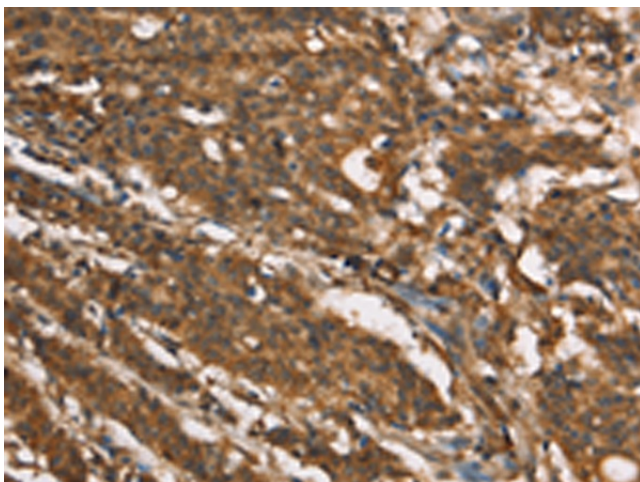
[View online »](#)

Synonyms: 1300013F15Rik; Mosc1

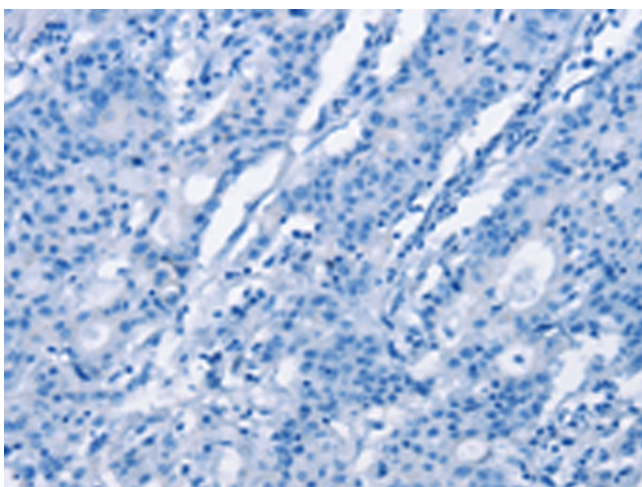
### Product images:



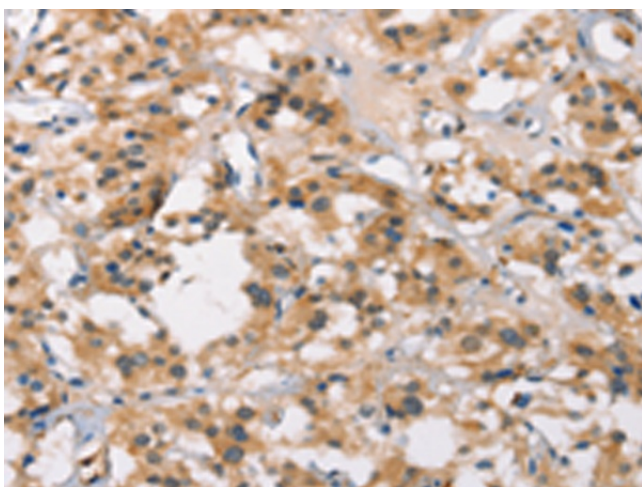
Gel: 10%SDS-PAGE  
Lysate: 40  $\mu$ g  
Lane: HepG2 cells  
Primary antibody: TA371242 (MTARC1 Antibody)  
at dilution 1/1400  
Secondary antibody: Goat anti rabbit IgG at  
1/8000 dilution  
Exposure time: 40 seconds



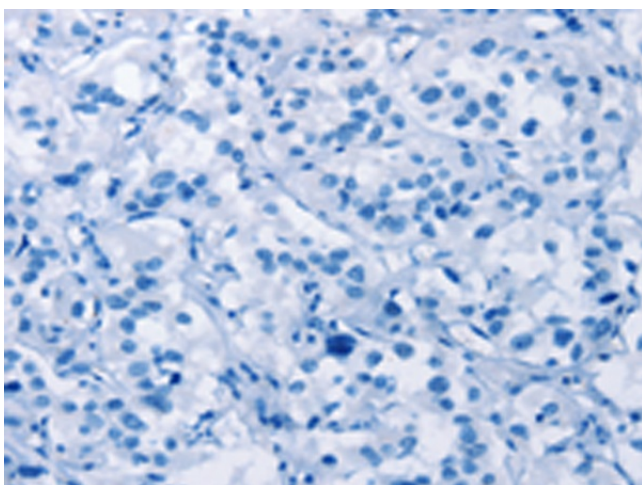
Immunohistochemistry of paraffin-embedded  
Human gastric cancer tissue using TA371242  
(MTARC1 Antibody) at dilution 1/40 (Original  
magnification:  $\times$ 200)



Immunohistochemistry of paraffin-embedded Human gastric cancer tissue using TA371242 (MTARC1 Antibody) at dilution 1/40, treated with synthetic peptide. (Original magnification: ×200)



Immunohistochemistry of paraffin-embedded Human thyroid cancer tissue using TA371242 (MTARC1 Antibody) at dilution 1/40 (Original magnification: ×200)



Immunohistochemistry of paraffin-embedded Human thyroid cancer tissue using TA371242 (MTARC1 Antibody) at dilution 1/40, treated with synthetic peptide. (Original magnification: ×200)