

Product datasheet for **TA371241S**

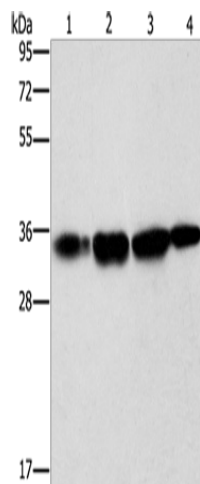
NDNL2 (NSMCE3) Rabbit Polyclonal Antibody

Product data:

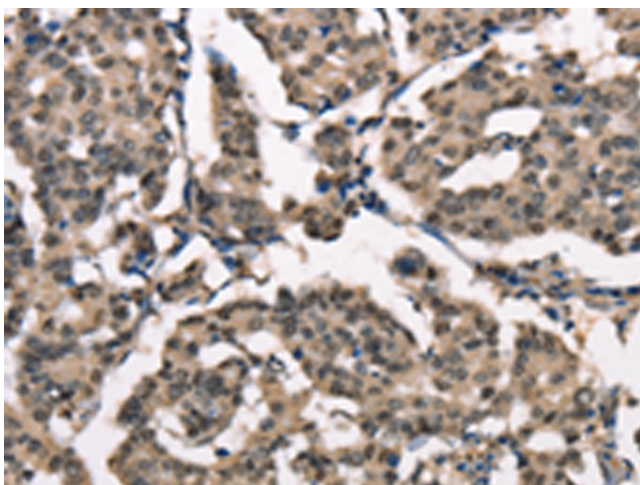
Product Type:	Primary Antibodies
Applications:	IHC, WB
Recommended Dilution:	WB: 1000-5000 WB positive control: Hela cells and human prostate tissue, A172 cells and mouse liver tissue IHC: 50-200 Positive control: Human breast cancer Predicted cell location: Cytoplasm or Nucleus
Reactivity:	Human, Mouse
Host:	Rabbit
Isotype:	IgG
Clonality:	Polyclonal
Immunogen:	Synthetic peptide of human NSMCE3
Formulation:	pH7.4 PBS, 0.05% NaN ₃ , 40% Glycerol
Concentration:	lot specific
Purification:	Antigen affinity purification
Conjugation:	Unconjugated
Storage:	Store at -20°C.
Stability:	1 year
Predicted Protein Size:	34 kDa
Gene Name:	NSE3 homolog, SMC5-SMC6 complex component
Database Link:	Entrez Gene 56160 Human Q96MG7
Background:	The protein encoded by this gene is part of the SMC5-6 chromatin reorganizing complex and is a member of the MAGE superfamily. This is an intronless gene. [provided by RefSeq, May 2011]



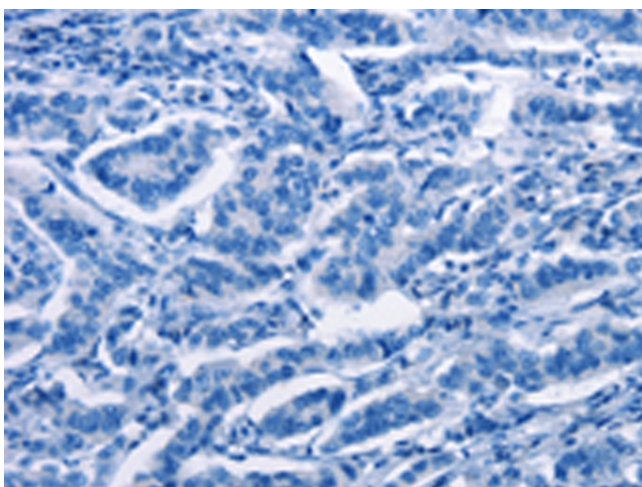
[View online »](#)

Product images:


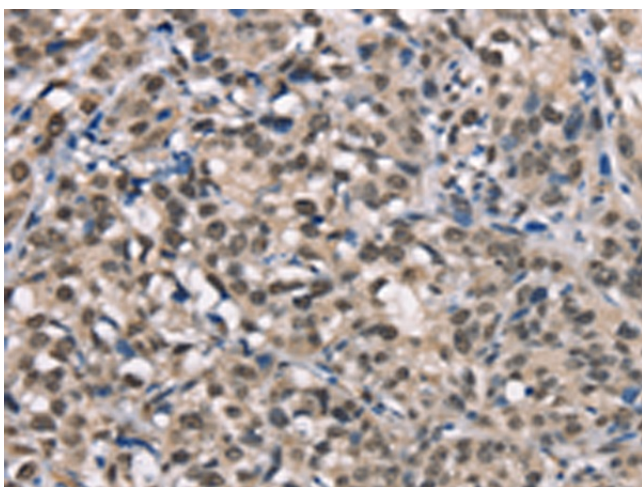
Gel: 10%SDS-PAGE
 Lysate: 40 µg
 Lane 1-4: HeLa cells
 human prostate tissue
 A172 cells
 mouse liver tissue
 Primary antibody: [TA371241] (NSMCE3 Antibody)
 at dilution 1/1500
 Secondary antibody: Goat anti rabbit IgG at
 1/8000 dilution
 Exposure time: 40 seconds



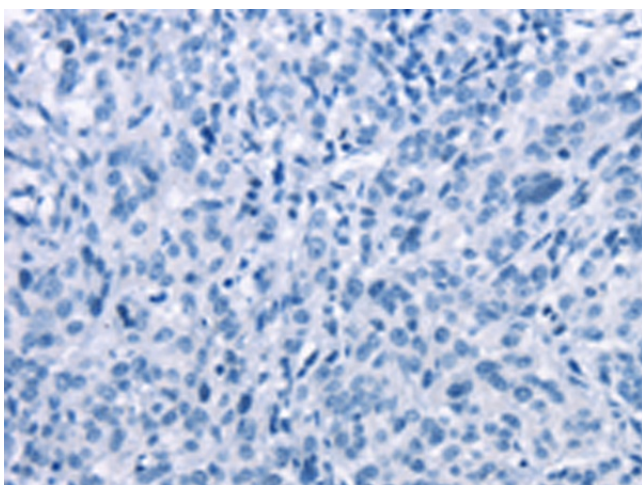
Immunohistochemistry of paraffin-embedded
 Human breast cancer tissue using [TA371241]
 (NSMCE3 Antibody) at dilution 1/40 (Original
 magnification: ×200)



Immunohistochemistry of paraffin-embedded Human breast cancer tissue using [TA371241] (NSMCE3 Antibody) at dilution 1/40, treated with synthetic peptide. (Original magnification: ×200)



Immunohistochemistry of paraffin-embedded Human esophagus cancer tissue using [TA371241] (NSMCE3 Antibody) at dilution 1/40 (Original magnification: ×200)



Immunohistochemistry of paraffin-embedded Human esophagus cancer tissue using [TA371241] (NSMCE3 Antibody) at dilution 1/40, treated with synthetic peptide. (Original magnification: ×200)