

Product datasheet for **TA371235S**

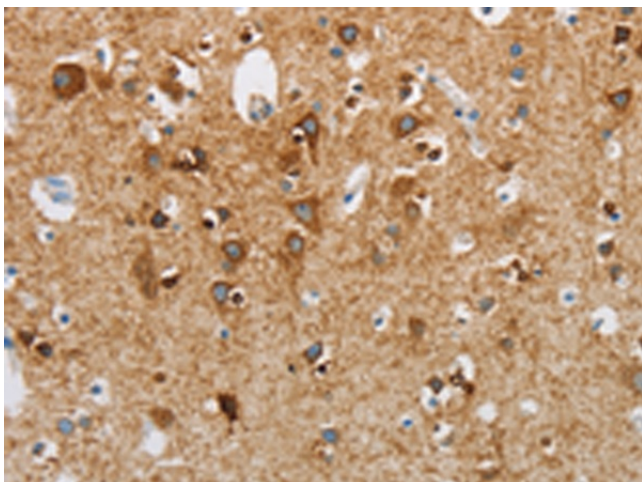
NEK5 Rabbit Polyclonal Antibody

Product data:

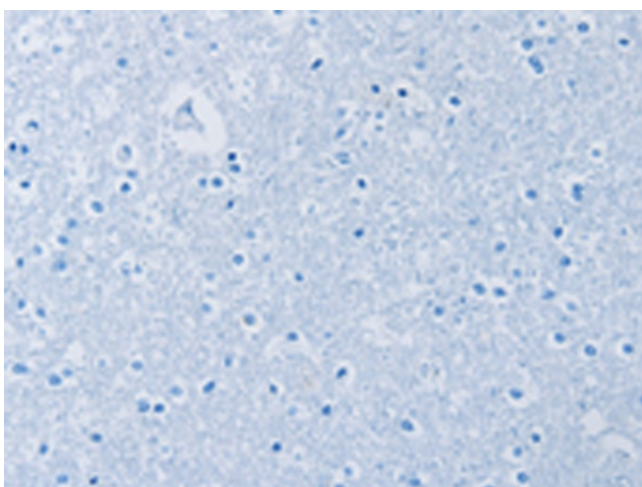
Product Type:	Primary Antibodies
Applications:	IHC
Recommended Dilution:	IHC: 25-100 Positive control: Human brain Predicted cell location: Cytoplasm
Reactivity:	Human
Host:	Rabbit
Isotype:	IgG
Clonality:	Polyclonal
Immunogen:	Synthetic peptide of human NEK5
Formulation:	pH7.4 PBS, 0.05% NaN ₃ , 40% Glycerol
Concentration:	lot specific
Purification:	Antigen affinity purification
Conjugation:	Unconjugated
Storage:	Store at -20°C.
Stability:	1 year
Gene Name:	NIMA related kinase 5
Database Link:	Entrez Gene 341676 Human Q6P3R8
Background:	Nek5 (NimA-related protein kinase 5) is a 708 amino acid protein that is related to NIMA, a protein that was originally discovered in <i>Aspergillus nidulans</i> and is necessary for entry into mitosis. One of several members of the Set/Thr protein kinase super family, Nek5 contains one protein kinase domain through which it catalyzes the ATP-dependent phosphorylation of target proteins. Like NIMA, Nek5 may be involved in mitotic regulation and cell cycle control.
Synonyms:	MGC75495



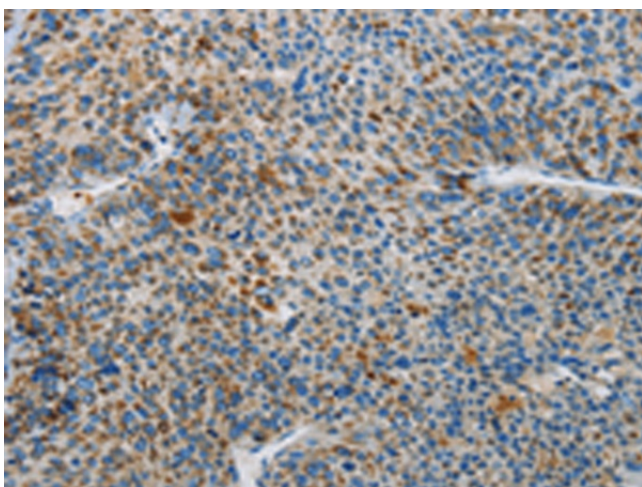
[View online »](#)

Product images:

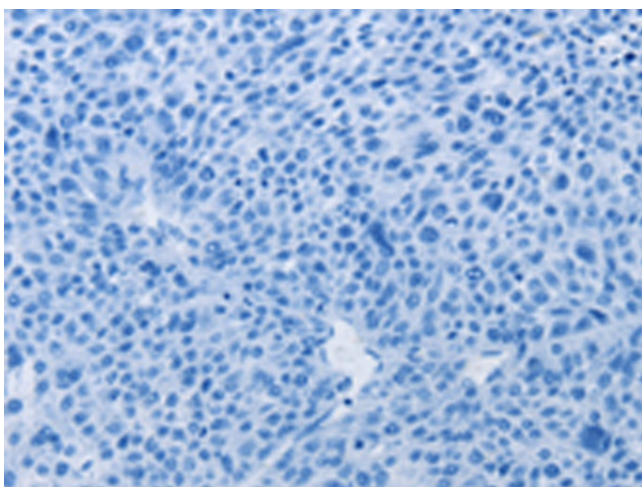
Immunohistochemistry of paraffin-embedded Human brain tissue using [TA371235] (NEK5 Antibody) at dilution 1/25 (Original magnification: ×200)



Immunohistochemistry of paraffin-embedded Human brain tissue using [TA371235] (NEK5 Antibody) at dilution 1/25, treated with synthetic peptide. (Original magnification: ×200)



Immunohistochemistry of paraffin-embedded Human liver cancer tissue using [TA371235] (NEK5 Antibody) at dilution 1/25 (Original magnification: $\times 200$)



Immunohistochemistry of paraffin-embedded Human liver cancer tissue using [TA371235] (NEK5 Antibody) at dilution 1/25, treated with synthetic peptide. (Original magnification: $\times 200$)